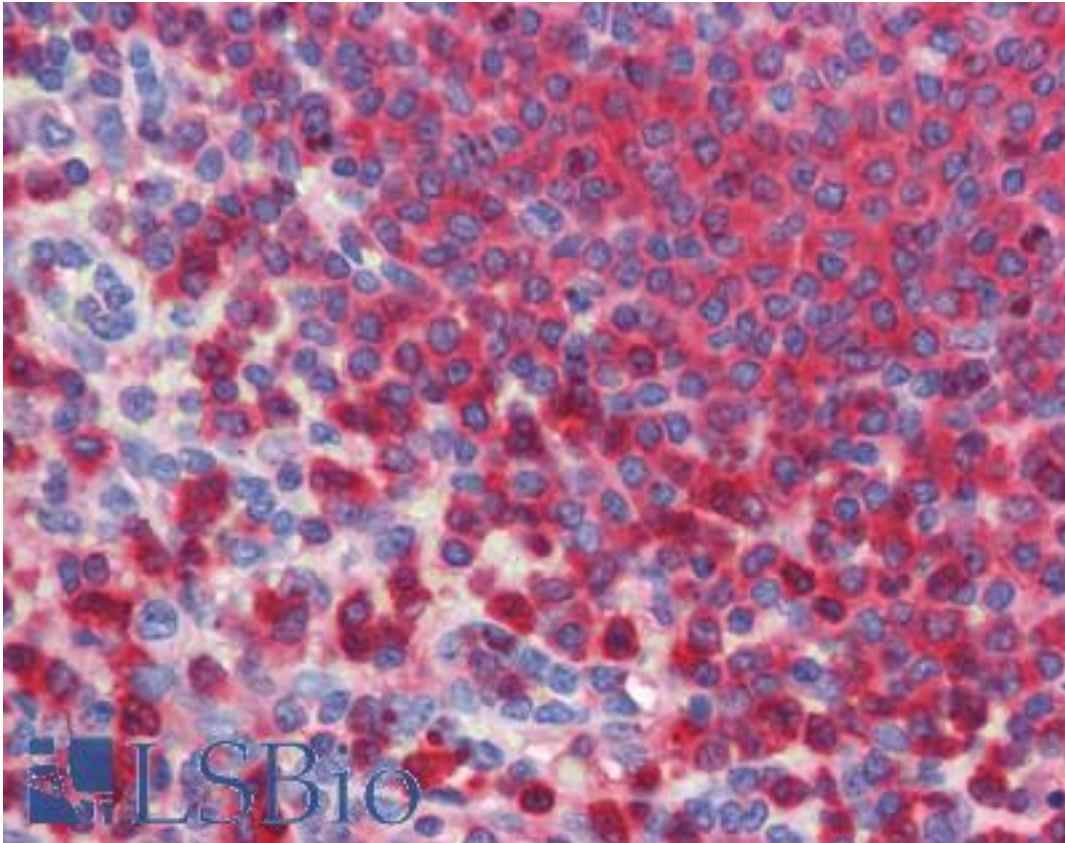


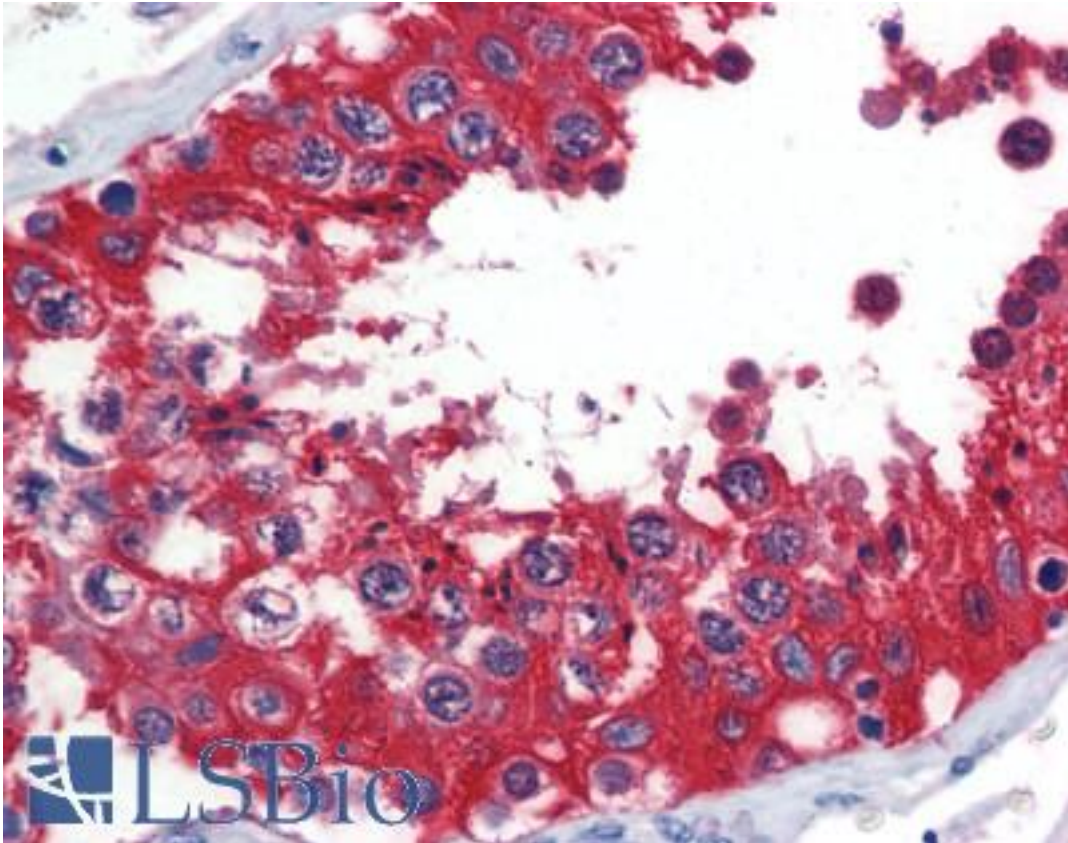
G6PD Mouse anti-Human Monoclonal (AT2F6) Antibody - LS-B3587 - LSBio	
CatalogID:	LS-B3587
Validation:	This antibody replaces catalog number LS-C103494. It has been validated for use in the following assays: IHC-P.
Target:	glucose-6-phosphate dehydrogenase (G6PD)
Synonyms:	G6PD Antibody, G6PD1 Antibody
Host	G6PD antibody was produced in Mouse
Clonality:	Monoclonal
Isotype:	IgG2b,k
Clone Name:	AT2F6
Immunogen Species:	G6PD antibody was raised against Human
Immunogen:	G6PD antibody was raised against recombinant human G6PD (35-506aa) purified from E. coli
Specificity:	human G6PD (35-506aa)
Reactivity:	Human
Purification:	Protein G purified
Presentation:	PBS, pH 7.4, 0.1% sodium azide
Recommended Storage:	Aliquot and store at -20°C. Minimize freezing and thawing.
Usage Summary:	Immunohistochemistry: LS-B3587 was validated for use in immunohistochemistry on a panel of 21 formalin-fixed, paraffin-embedded (FFPE) human tissues after heat induced antigen retrieval in pH 6.0 citrate buffer. After incubation with the primary antibody, slides were incubated with biotinylated secondary antibody, followed by alkaline phosphatase-streptavidin and chromogen. The stained slides were evaluated by a pathologist to confirm staining specificity. The optimal working concentration for LS-B3587 was determined to be 5 ug/ml. Western Blot: Cell lysates of MCF7 (30 ug) were resolved by SDS-PAGE, transferred to NC membrane and probed with anti-human G6PD (1:1000). Proteins were visualized using a goat anti-mouse secondary antibody conjugated to HRP and an ECL detection system.
Uses:	IHC - Paraffin (5 µg/ml), Western blot (1:1000 - 1:2000), ELISA (Optimal dilution to be determined by the researcher)
Size:	50 µl
Concentration:	1 mg/ml

Immunohistochemistry Image:



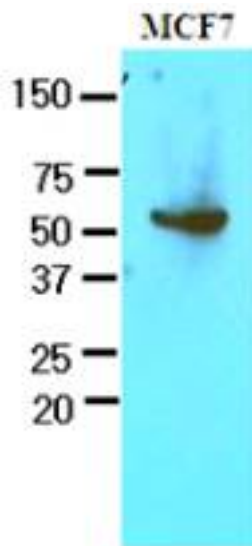
Anti-G6PD antibody IHC of human spleen. Immunohistochemistry of formalin-fixed, paraffin-embedded tissue after heat-induced antigen retrieval. Antibody LS-B3587 concentration 5 ug/ml.

Immunohistochemistry Image:



Anti-G6PD antibody IHC of human testis. Immunohistochemistry of formalin-fixed, paraffin-embedded tissue after heat-induced antigen retrieval. Antibody LS-B3587 concentration 5 ug/ml.

Western Blot Image:



Western analysis of MCF7 cell lysates.

Requested From:

Japan

Laboratory Reagent For In Vitro Research Use Only

Not for resale without prior written consent from LifeSpan BioSciences, Inc.

Created on 9/23/2014

© 2014 LifeSpan BioSciences