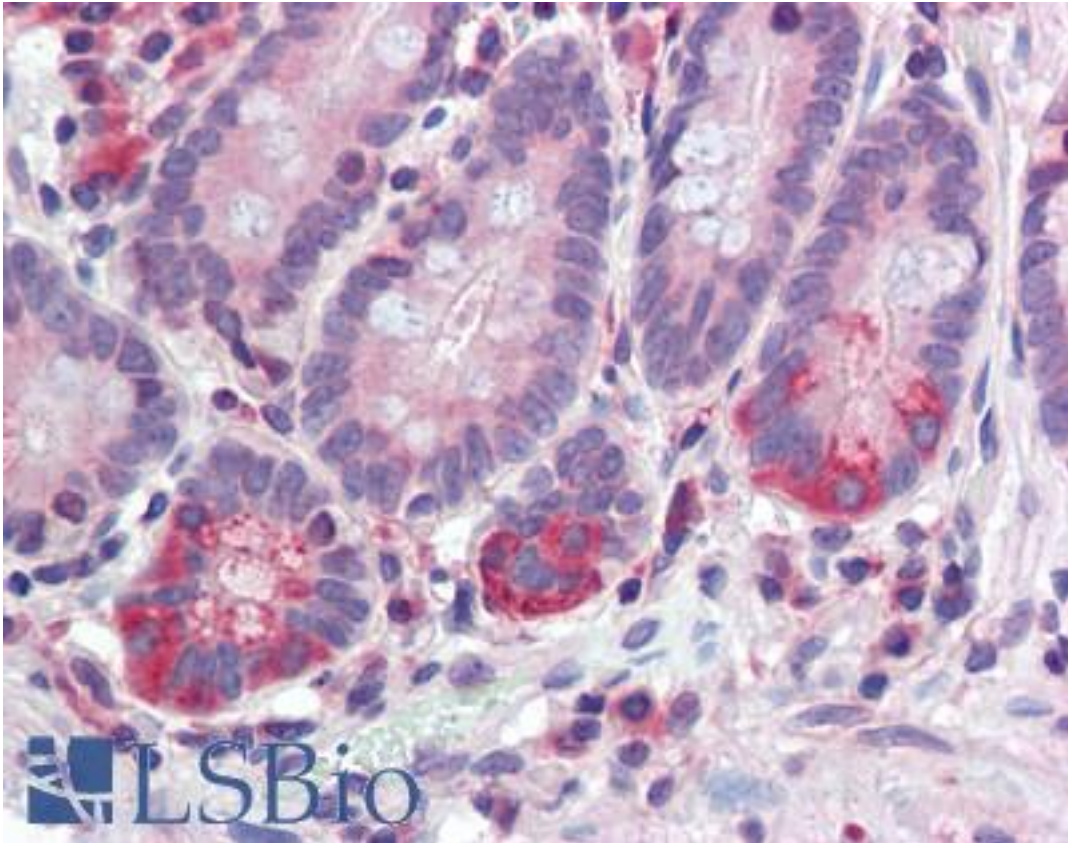


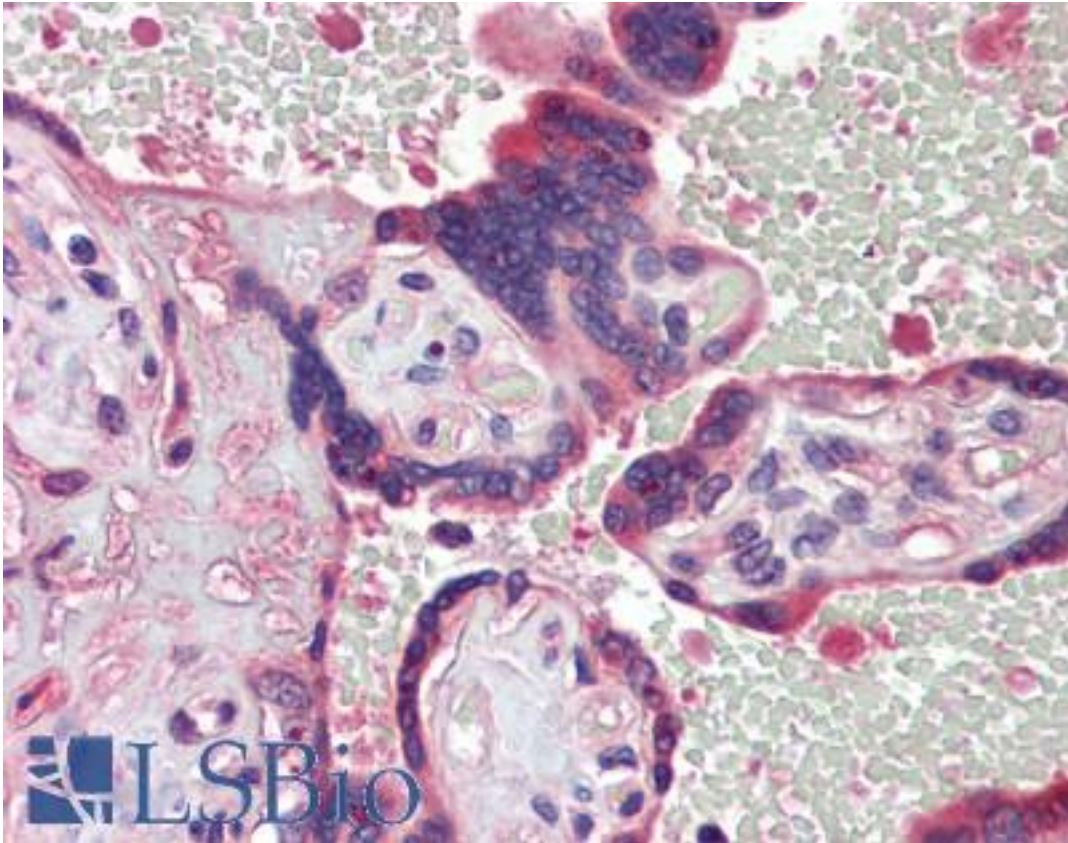
TDP1 Mouse anti-Human Monoclonal (AT1F2) Antibody - LS-B3586 - LSBio	
<b>CatalogID:</b>	LS-B3586
<b>Validation:</b>	This antibody replaces catalog number LS-C103493. It has been validated for use in the following assays: IHC-P.
<b>Target:</b>	tyrosyl-DNA phosphodiesterase 1 (TDP1)
<b>Synonyms:</b>	TDP1 Antibody, Tyr-DNA phosphodiesterase 1 Antibody, SCAN1 Antibody
<b>Host</b>	TDP1 antibody was produced in Mouse
<b>Clonality:</b>	Monoclonal
<b>Isotype:</b>	IgG2b,k
<b>Clone Name:</b>	AT1F2
<b>Immunogen Species:</b>	TDP1 antibody was raised against Human
<b>Immunogen:</b>	TDP1 antibody was raised against recombinant human TDP1 (1-298aa) purified from E. coli
<b>Specificity:</b>	human TDP1 (1-298aa)
<b>Reactivity:</b>	Human
<b>Purification:</b>	Protein G purified
<b>Presentation:</b>	PBS, pH 7.4, 0.1% sodium azide
<b>Recommended Storage:</b>	Aliquot and store at -20°C. Minimize freezing and thawing.
<b>Usage Summary:</b>	Immunohistochemistry: LS-B3586 was validated for use in immunohistochemistry on a panel of 21 formalin-fixed, paraffin-embedded (FFPE) human tissues after heat induced antigen retrieval in pH 6.0 citrate buffer. After incubation with the primary antibody, slides were incubated with biotinylated secondary antibody, followed by alkaline phosphatase-streptavidin and chromogen. The stained slides were evaluated by a pathologist to confirm staining specificity. The optimal working concentration for LS-B3586 was determined to be 5 ug/ml. Western Blot: Cell lysates of MCF7 (30 ug) were resolved by SDS-PAGE, transferred to NC membrane and probed with anti-human TDP1 (1:1000). Proteins were visualized using a goat anti-mouse secondary antibody conjugated to HRP and an ECL detection system.
<b>Uses:</b>	IHC - Paraffin (5 ug/ml), Western blot (1:1000 - 1:2000), ELISA (Optimal dilution to be determined by the researcher)
<b>Size:</b>	50 µl

**Immunohistochemistry Image:**



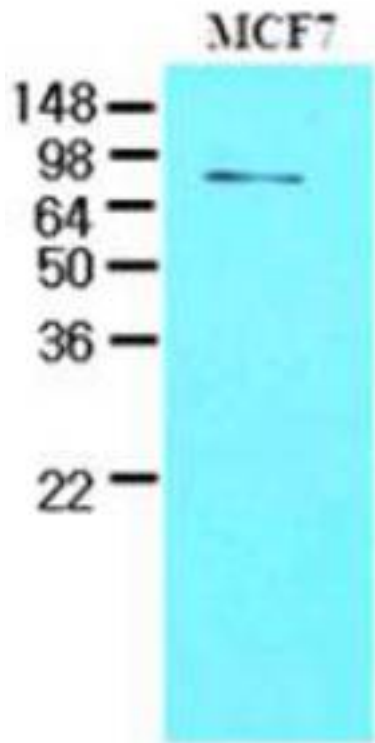
Anti-TDP1 antibody IHC of human small intestine. Immunohistochemistry of formalin-fixed, paraffin-embedded tissue after heat-induced antigen retrieval. Antibody LS-B3586 concentration 5 ug/ml.

**Immunohistochemistry Image:**



Anti-TDP1 antibody IHC of human placenta. Immunohistochemistry of formalin-fixed, paraffin-embedded tissue after heat-induced antigen retrieval. Antibody LS-B3586 concentration 5 ug/ml.

**Western Blot Image:**



Western analysis of MCF cell lysates.

**Requested From:**

Japan

Laboratory Reagent For In Vitro Research Use Only

Not for resale without prior written consent from LifeSpan BioSciences, Inc.

Created on 9/23/2014

© 2014 LifeSpan BioSciences