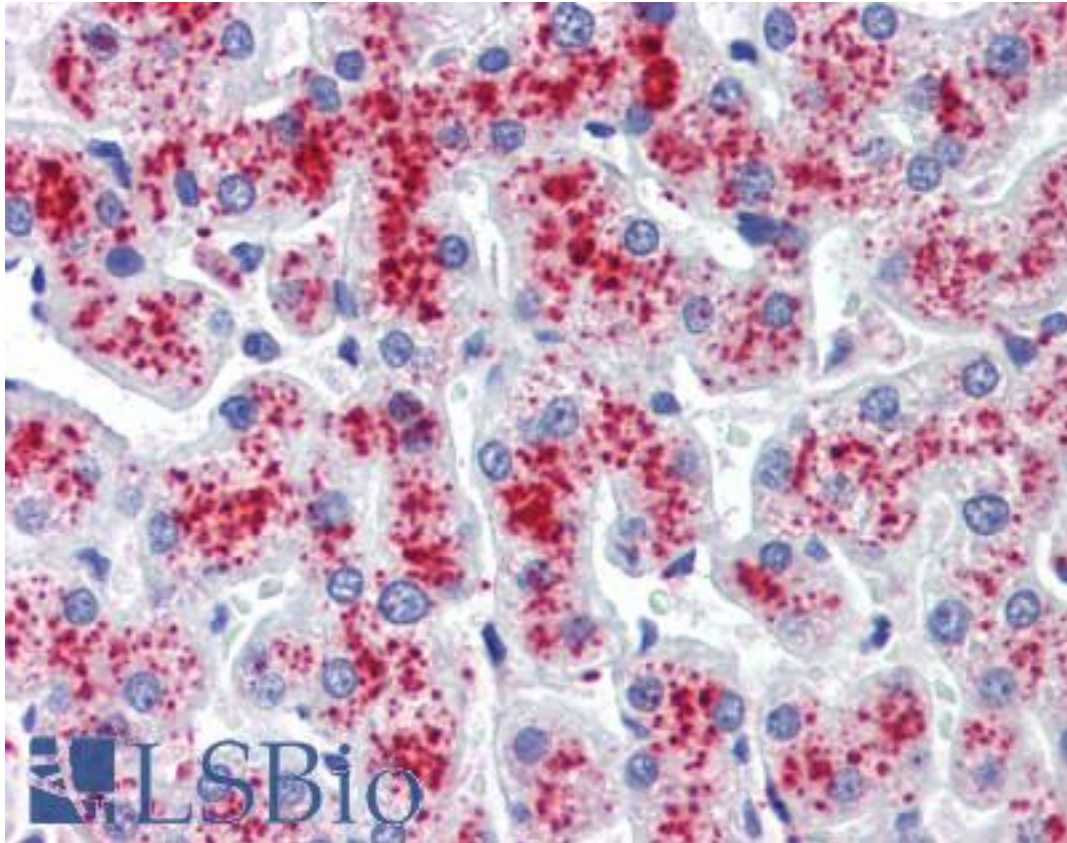


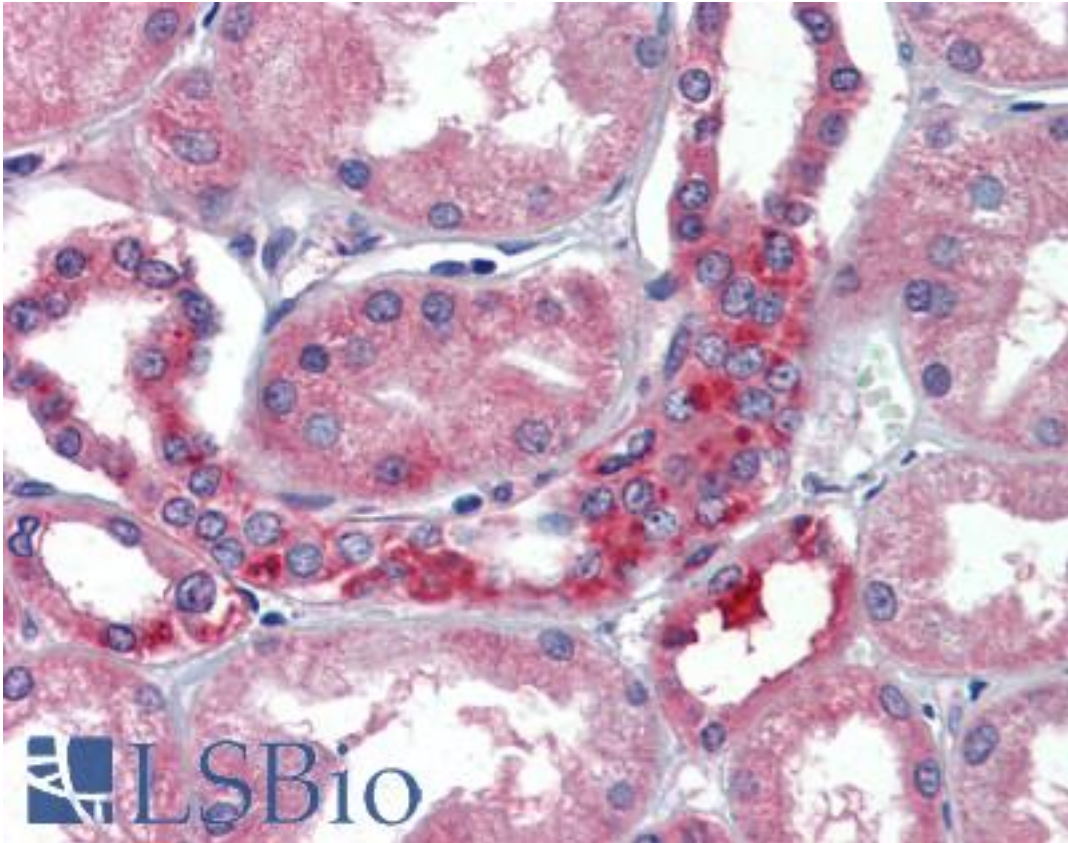
RNH1 Mouse anti-Human Monoclonal (AT1H23) Antibody - LS-B3585 - LSBio	
CatalogID:	LS-B3585
Validation:	This antibody replaces catalog number LS-C103490. It has been validated for use in the following assays: IHC-P.
Target:	ribonuclease/angiogenin inhibitor 1 (RNH1)
Synonyms:	RNH1 Antibody, Placental RNase inhibitor Antibody, PRI Antibody, RAI Antibody, Ribonuclease inhibitor Antibody, RNH Antibody
Host	RNH1 antibody was produced in Mouse
Clonality:	Monoclonal
Isotype:	IgG2a,k
Clone Name:	AT1H23
Immunogen Species:	RNH1 antibody was raised against Human
Immunogen:	RNH1 antibody was raised against recombinant Ribonuclease inhibitor 1(RNH1) (7-461aa) purified from E. coli
Specificity:	Ribonuclease inhibitor 1(RNH1) (7-461aa)
Reactivity:	Human, Mouse
Purification:	Protein G purified
Presentation:	PBS, pH 7.4, 0.1% sodium azide
Recommended Storage:	Aliquot and store at -20°C. Minimize freezing and thawing.
Usage Summary:	Immunohistochemistry: LS-B3585 was validated for use in immunohistochemistry on a panel of 21 formalin-fixed, paraffin-embedded (FFPE) human tissues after heat induced antigen retrieval in pH 6.0 citrate buffer. After incubation with the primary antibody, slides were incubated with biotinylated secondary antibody, followed by alkaline phosphatase-streptavidin and chromogen. The stained slides were evaluated by a pathologist to confirm staining specificity. The optimal working concentration for LS-B3585 was determined to be 5 ug/ml. Western Blot: Extracts of mouse liver (20ug) were resolved by SDS-PAGE, transferred to NC membrane and probed with anti-human RNH1 (1:1000). Proteins were visualized using a goat anti-mouse secondary antibody.
Uses:	IHC - Paraffin (5 µg/ml), Western blot (1:1000 - 1:2000), ELISA (Optimal dilution to be determined by the researcher)
Size:	50 µl
Concentration:	1 mg/ml

Immunohistochemistry Image:



Anti-RNH1 antibody IHC of human liver. Immunohistochemistry of formalin-fixed, paraffin-embedded tissue after heat-induced antigen retrieval. Antibody LS-B3585 concentration 5 ug/ml.

Immunohistochemistry Image:



Anti-RNH1 antibody IHC of human kidney. Immunohistochemistry of formalin-fixed, paraffin-embedded tissue after heat-induced antigen retrieval. Antibody LS-B3585 concentration 5 ug/ml.

Requested From:

Japan

Laboratory Reagent For In Vitro Research Use Only

Not for resale without prior written consent from LifeSpan BioSciences, Inc.

Created on 9/23/2014

© 2014 LifeSpan BioSciences