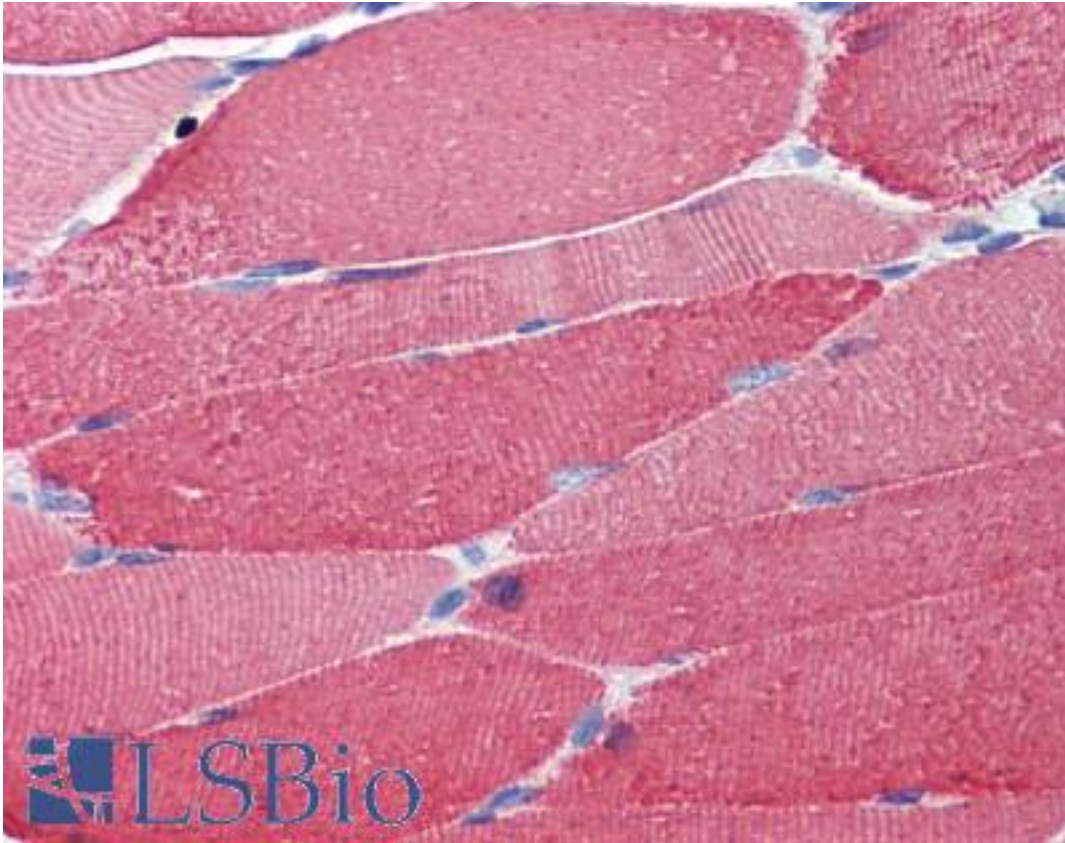


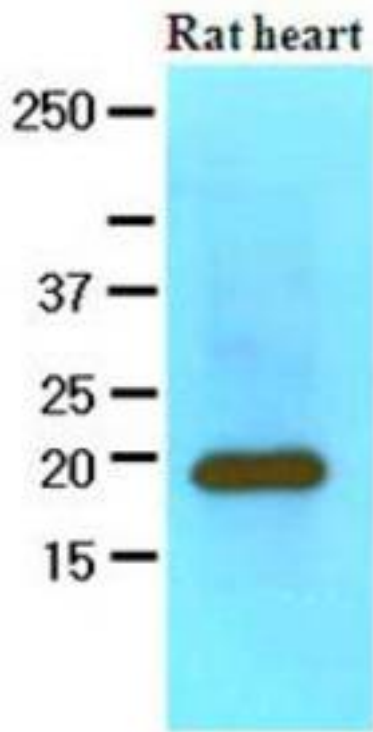
MYL2 Mouse anti-Human Monoclonal (AT3B2) Antibody - LS-B3584 - LSBio	
<b>CatalogID:</b>	LS-B3584
<b>Validation:</b>	This antibody replaces catalog number LS-C103487. It has been validated for use in the following assays: IHC-P.
<b>Target:</b>	myosin, light chain 2, regulatory, cardiac, slow (MYL2)
<b>Synonyms:</b>	MYL2 Antibody, MLC2 Antibody, Myosin light chain 2 Antibody, MLC-2 Antibody, RLC of myosin Antibody, CMH10 Antibody, MLC-2v Antibody
<b>Host</b>	MYL2 antibody was produced in Mouse
<b>Clonality:</b>	Monoclonal
<b>Isotype:</b>	IgG2b,k
<b>Clone Name:</b>	AT3B2
<b>Immunogen Species:</b>	MYL2 antibody was raised against Human
<b>Immunogen:</b>	MYL2 antibody was raised against recombinant human MYL2 (1-166aa) purified from E. coli
<b>Specificity:</b>	human MYL2 (1-166aa)
<b>Reactivity:</b>	Human, Mouse, Rat
<b>Purification:</b>	Protein G purified
<b>Presentation:</b>	PBS, pH 7.4, 0.1% sodium azide
<b>Recommended Storage:</b>	Aliquot and store at -20°C. Minimize freezing and thawing.
<b>Usage Summary:</b>	Immunohistochemistry: LS-B3584 was validated for use in immunohistochemistry on a panel of 21 formalin-fixed, paraffin-embedded (FFPE) human tissues after heat induced antigen retrieval in pH 6.0 citrate buffer. After incubation with the primary antibody, slides were incubated with biotinylated secondary antibody, followed by alkaline phosphatase-streptavidin and chromogen. The stained slides were evaluated by a pathologist to confirm staining specificity. The optimal working concentration for LS-B3584 was determined to be 5 ug/ml. Western Blot: Extracts of Rat heart (60ug) were resolved by SDS-PAGE, transferred to NC membrane and probed with anti-human MYL2 (1:1000). Proteins were visualized using a goat anti-mouse secondary antibody conjugated to HRP and an ECL detection system.
<b>Uses:</b>	IHC - Paraffin (5 µg/ml), Western blot (1:1000 - 1:2000), ELISA (Optimal dilution to be determined by the researcher)
<b>Size:</b>	50 µl
<b>Concentration:</b>	1 mg/ml

**Immunohistochemistry Image:**



Anti-MYL2 antibody IHC of human skeletal muscle. Immunohistochemistry of formalin-fixed, paraffin-embedded tissue after heat-induced antigen retrieval. Antibody LS-B3584 concentration 5 ug/ml.

**Western Blot Image:**



Western analysis of mouse liver extracts

**Requested From:**

Japan

Laboratory Reagent For In Vitro Research Use Only

Not for resale without prior written consent from LifeSpan BioSciences, Inc.

Created on 9/23/2014

© 2014 LifeSpan BioSciences