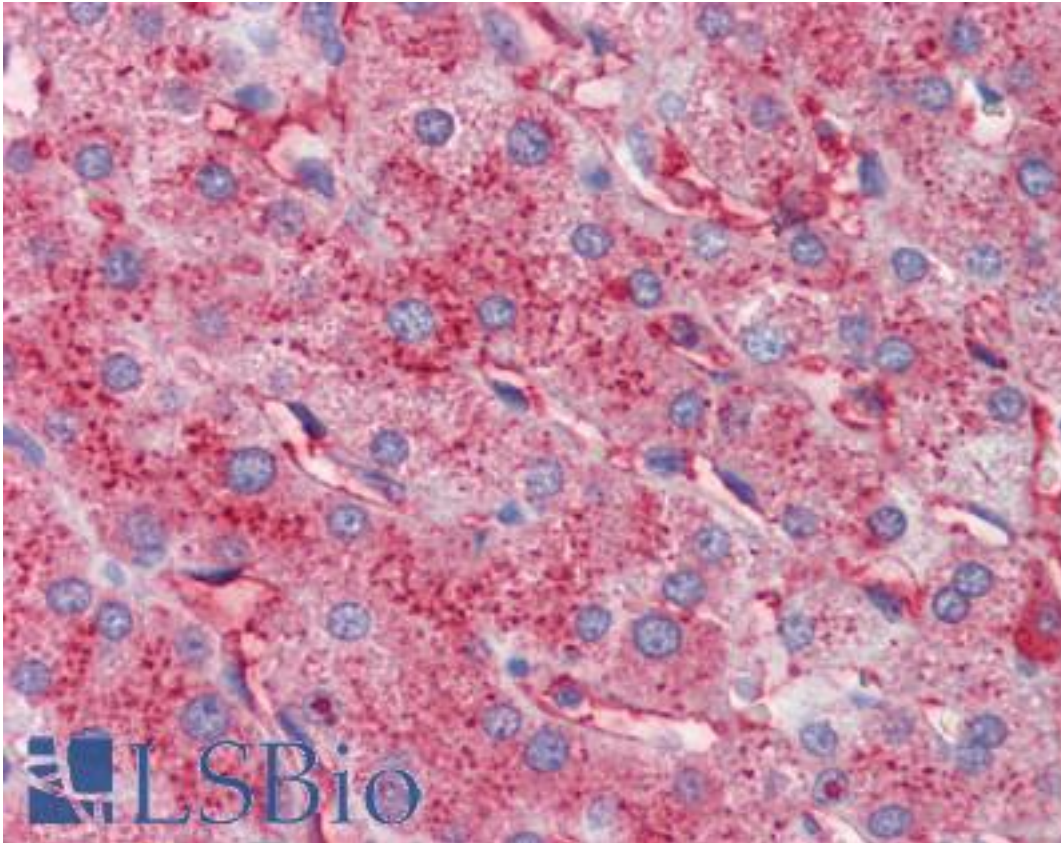


APOC3 / Apolipoprotein C III Goat anti-Human Polyclonal Antibody - LS-B3581 - LSBio	
<b>CatalogID:</b>	LS-B3581
<b>Validation:</b>	This antibody replaces catalog number LS-C20743. It has been validated for use in the following assays: IHC-P.
<b>Target:</b>	apolipoprotein C-III (APOC3)
<b>Synonyms:</b>	APOC3 Antibody, Apo-CIII Antibody, Apolipoprotein C3 Antibody, APOCIII Antibody, HALP2 Antibody, ApoC-III Antibody, Apolipoprotein C-III Antibody
<b>Host</b>	APOC3 antibody was produced in Goat
<b>Clonality:</b>	Polyclonal
<b>Isotype:</b>	IgG
<b>Immunogen Species:</b>	APOC3 / Apolipoprotein C III antibody was raised against Human
<b>Immunogen:</b>	APOC3 / Apolipoprotein C III antibody was raised against synthetic full-length Apolipoprotein Type C-III.
<b>Specificity:</b>	Recognizes human apolipoprotein C-III and has negligible cross-reactivity with Type A-I, A-II, B, C-I, C-II, E and J apolipoprotein. Non-specific cross-reactivity of anti-apolipoprotein antibodies with other human serum proteins is negligible.
<b>Reactivity:</b>	Human
<b>Purification:</b>	Immunoaffinity purified
<b>Presentation:</b>	0.125 M sodium borate, 0.075 M sodium chloride, 0.005 M EDTA, pH 8.0, 0.01% sodium azide.
<b>Recommended Storage:</b>	Long term: -20°C; Short term: +4°C. Avoid repeat freeze-thaw cycles.
<b>Usage Summary:</b>	Immunohistochemistry: LS-B3581 was validated for use in immunohistochemistry on a panel of 21 formalin-fixed, paraffin-embedded (FFPE) human tissues after heat induced antigen retrieval in pH 6.0 citrate buffer. After incubation with the primary antibody, slides were incubated with biotinylated secondary antibody, followed by alkaline phosphatase-streptavidin and chromogen. The stained slides were evaluated by a pathologist to confirm staining specificity. The optimal working concentration for LS-B3581 was determined to be 2.5 ug/ml. Western Blot: 1:500-1:5000. ELISA: 1:5000-1:10000. Immunoprecipitation: 1:100.
<b>Uses:</b>	IHC - Paraffin (2.5 µg/ml), Western blot (1:500 - 1:5000), Immunoprecipitation (1:100), ELISA (1:5000 - 1:10000) (Optimal dilution to be determined by the researcher)
<b>Size:</b>	50 µg
<b>Concentration:</b>	1 mg/ml

**Immunohistochemistry Image:**



Anti-APOC3 / Apolipoprotein CIII antibody IHC of human liver. Immunohistochemistry of formalin-fixed, paraffin-embedded tissue after heat-induced antigen retrieval. Antibody LS-B3581 concentration 2.5 ug/ml.

**Requested From:**

Japan

Laboratory Reagent For In Vitro Research Use Only

Not for resale without prior written consent from LifeSpan BioSciences, Inc.

Created on 9/23/2014

© 2014 LifeSpan BioSciences