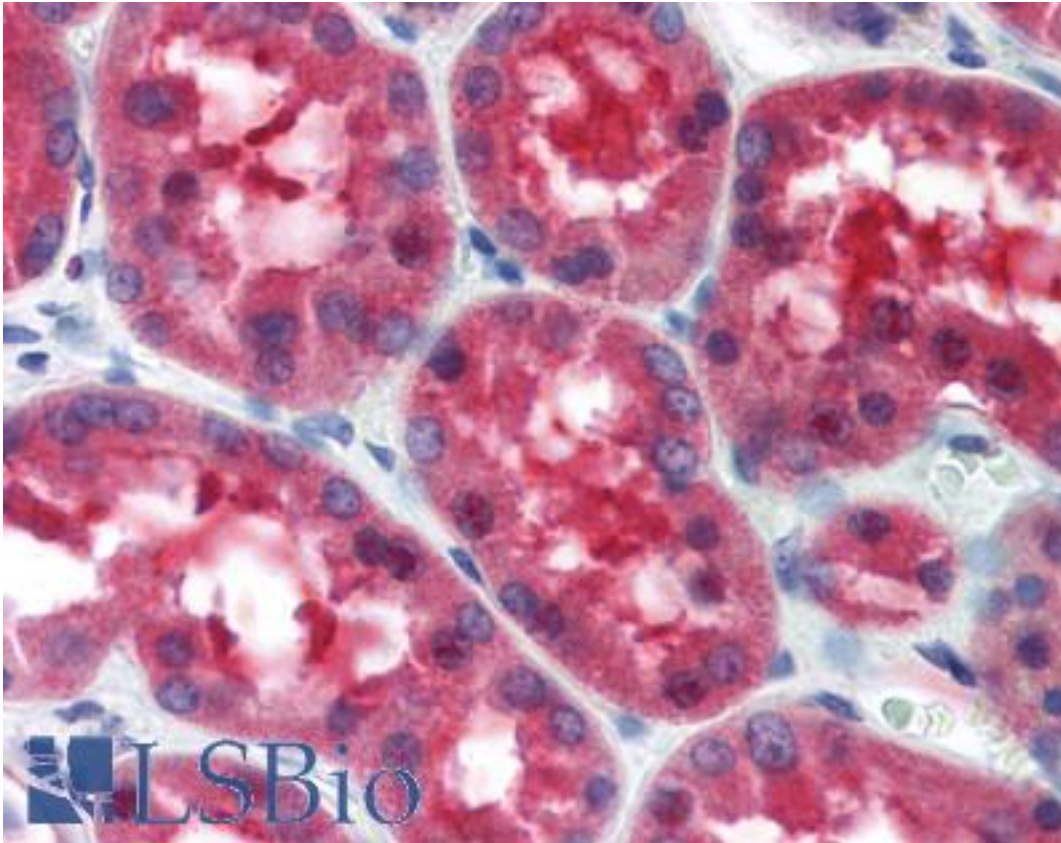


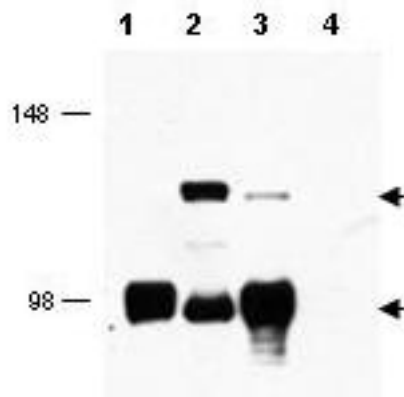
CRTC1 / MECT1 / TORC1 Rabbit anti-Human Polyclonal (aa19-34) Antibody - LS-B356 - LSBio	
CatalogID:	LS-B356
Validation:	This antibody replaces catalog number LS-C19119. It has been validated for use in the following assays: IHC.
Target:	CREB regulated transcription coactivator 1 (CRTC1)
Synonyms:	CRTC1 Antibody, KIAA0616 Antibody, MECT1 Antibody, TORC-1 Antibody, TORC1 Antibody, Transducer of CREB protein 1 Antibody, WAMTP1 Antibody
Host	CRTC1 antibody was produced in Rabbit
Clonality:	Polyclonal
Immunogen Species:	CRTC1 / MECT1 / TORC1 antibody was raised against Human
Antigen Type:	Synthetic peptide
Immunogen:	CRTC1 / MECT1 / TORC1 antibody was raised against synthetic peptide from human CRTC1 / MECT1.
Specificity:	Amino acids 19-34 of human MECT1 protein.
Epitope:	aa19-34
Reactivity:	Human, Mouse, Rat, Bovine, Pufferfish, Zebrafish
Purification:	Immunoaffinity purified
Presentation:	0.02 M potassium phosphate, 0.15 M sodium chloride, pH 7.2, 0.01% sodium azide.
Recommended Storage:	Long term: -20°C; Short term: +4°C. Avoid repeat freeze-thaw cycles.
Usage Summary:	Immunohistochemistry: LS-B356 was validated for use in immunohistochemistry on a panel of 21 formalin-fixed, paraffin-embedded (FFPE) human tissues after heat induced antigen retrieval in pH 6.0 citrate buffer. After incubation with the primary antibody, slides were incubated with biotinylated secondary antibody, followed by alkaline phosphatase-streptavidin and chromogen. The stained slides were evaluated by a pathologist to confirm staining specificity. The optimal working concentration for LS-B356 was determined to be 1:500.
Uses:	IHC - Paraffin (1:500), Western blot (1:500 - 1:2000), ELISA (1:10000 - 1:40000) (Optimal dilution to be determined by the researcher)
Size:	50 µg
Concentration:	0.95 mg/ml

Immunohistochemistry Image:



Anti-CRTC1 / MECT1 antibody IHC of human kidney. Immunohistochemistry of formalin-fixed, paraffin-embedded tissue after heat-induced antigen retrieval. Antibody LS-B356 dilution 1:500.

Western Blot Image:



Anti-MECT2 Antibody - Western Blot. Western blot of affinity purified anti-MECT2 antibody shows detection of MECT2 (lower arrowhead) and MECT2: MAML2 fusion protein (top arrowhead) in cell lysates. Lane 1 contains lysate from cells expressing MECT2 only. Lane 2 contains lysate from cells transfected with fusion protein. Lane 3 contains lysate from cells strongly expressing MECT2 and weakly expressing the fusion protein. Lane 4 contains lysate from control cells. After SDS-PAGE and transfer, the membrane was probed with the primary antibody diluted to 1:1000. Personal Communication, Frederick Kaye, CCR-NCI, Bethesda, MD.

Requested From:

Japan

Laboratory Reagent For In Vitro Research Use Only

Not for resale without prior written consent from LifeSpan BioSciences, Inc.

Created on 9/23/2014

© 2014 LifeSpan BioSciences