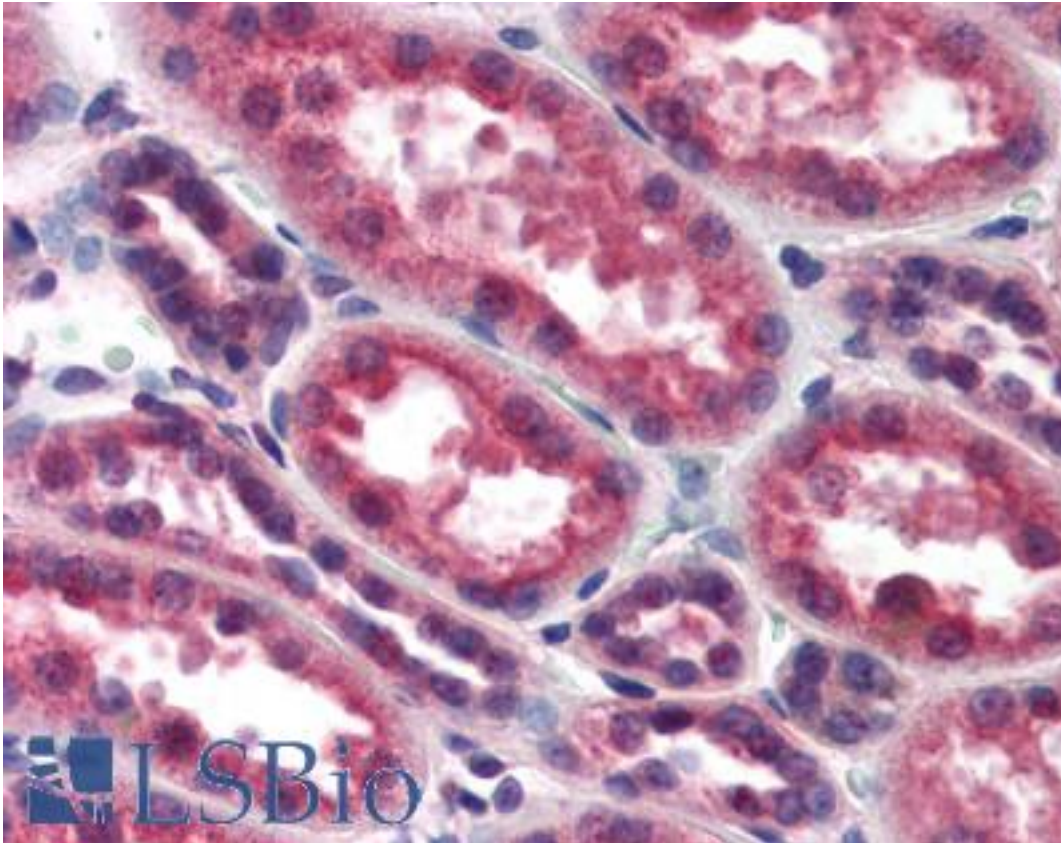


CHUK / IKKA / IKK Alpha Rabbit anti-Human Polyclonal (C-Terminus) Antibody - LS-B355 - LSBio	
CatalogID:	LS-B355
Validation:	This antibody replaces catalog number LS-C18934. It has been validated for use in the following assays: IHC.
Target:	conserved helix-loop-helix ubiquitous kinase (CHUK)
Synonyms:	CHUK Antibody, I-kappa-B kinase alpha Antibody, I-kappa-B kinase-alpha Antibody, Ikb kinase alpha Antibody, IKK-A Antibody, IKBKA Antibody, IKK1 Antibody, NFKBIKA Antibody, I-kappa-B kinase 1 Antibody, IkappaB kinase Antibody, IKK Alpha Antibody, IKK-alpha Antibody, IKKA Antibody, Transcription factor 16 Antibody, IkappaBalpha Kinase Antibody, Ikb kinase alpha subunit Antibody, IKK-a kinase Antibody, Ikkalpha Antibody, TCF-16 Antibody, TCF16 Antibody
Family / Subfamily:	Protein Kinase / IKAPPAB
Host	CHUK antibody was produced in Rabbit
Clonality:	Polyclonal
Immunogen Species:	CHUK / IKKA / IKK Alpha antibody was raised against Human
Specificity:	IKK a peptide corresponding to the highly conserved C-terminus region of the human protein conjugated to Keyhole Limpet Hemocyanin (KLH).
Epitope:	C-Terminus
Reactivity:	Human, Mouse, Rat
Purification:	Delipidated and defibrinated
Recommended Storage:	Store vial at -20 C or below prior to opening. Dilute only prior to immediate use. Aliquot contents and freeze at -20 C or below. Avoid cycles of freezing and thawing.
Usage Summary:	Immunohistochemistry: LS-B355 was validated for use in immunohistochemistry on a panel of 21 formalin-fixed, paraffin-embedded (FFPE) human tissues after heat induced antigen retrieval in pH 6.0 citrate buffer. After incubation with the primary antibody, slides were incubated with biotinylated secondary antibody, followed by alkaline phosphatase-streptavidin and chromogen. The stained slides were evaluated by a pathologist to confirm staining specificity. The optimal working concentration for LS-B355 was determined to be 1:500.
Uses:	IHC - Paraffin (1:500), Immunofluorescence, Western blot, Immunoprecipitation, ELISA (Optimal dilution to be determined by the researcher)
Size:	50 µl

Immunohistochemistry Image:



Anti-CHUK / IKK-Alpha antibody IHC of human kidney. Immunohistochemistry of formalin-fixed, paraffin-embedded tissue after heat-induced antigen retrieval. Antibody LS-B355 dilution 1:500.

Requested From:

Japan

Laboratory Reagent For In Vitro Research Use Only

Not for resale without prior written consent from LifeSpan BioSciences, Inc.

Created on 9/23/2014

© 2014 LifeSpan BioSciences