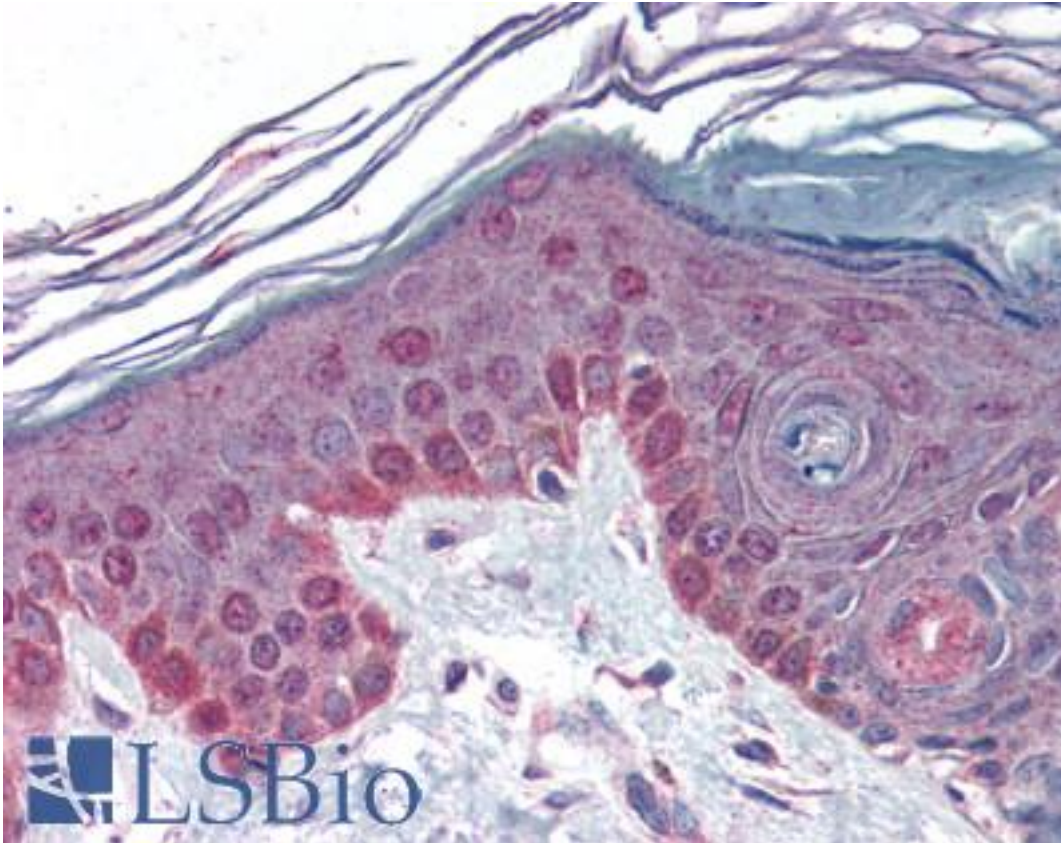


CCNT1 / Cyclin T1 Rabbit anti-Human Polyclonal (Internal) Antibody - LS-B351 - LSBio

CatalogID:	LS-B351
Validation:	This antibody replaces catalog number LS-C18945. It has been validated for use in the following assays: IHC.
Target:	cyclin T1 (CCNT1)
Synonyms:	CCNT1 Antibody, CCNT Antibody, CDK9-associated C-type protein Antibody, Cyclin T1b Antibody, CYCT1 Antibody, Cyclin T1 Antibody, HIVE1 Antibody, Cyclin C-related protein Antibody, Cyclin-T Antibody, Cyclin-T1 Antibody
Host	CCNT1 antibody was produced in Rabbit
Clonality:	Polyclonal
Immunogen Species:	CCNT1 / Cyclin T1 antibody was raised against Human
Specificity:	Cyclin T1 peptide corresponding to an internal region of the human protein conjugated to Keyhole Limpet Hemocyanin (KLH).
Epitope:	Internal
Reactivity:	Human, Mouse, Rat
Purification:	Sterile filtered
Presentation:	0.02 M potassium phosphate, 0.15 M sodium chloride, pH 7.2, 0.01% sodium azide.
Recommended Storage:	+4°C or -20°C, Avoid repeated freezing and thawing.
Usage Summary:	Immunohistochemistry: LS-B351 was validated for use in immunohistochemistry on a panel of 21 formalin-fixed, paraffin-embedded (FFPE) human tissues after heat induced antigen retrieval in pH 6.0 citrate buffer. After incubation with the primary antibody, slides were incubated with biotinylated secondary antibody, followed by alkaline phosphatase-streptavidin and chromogen. The stained slides were evaluated by a pathologist to confirm staining specificity. The optimal working concentration for LS-B351 was determined to be 1:500.
Uses:	IHC - Paraffin (1:500), Western blot (1:500 - 1:2000), Immunoprecipitation, ELISA (1:1000 - 1:5000) (Optimal dilution to be determined by the researcher)
Size:	50 µl
Concentration:	75 mg/ml

Immunohistochemistry Image:



Anti-CCNT1 / Cyclin T1 antibody IHC of human skin. Immunohistochemistry of formalin-fixed, paraffin-embedded tissue after heat-induced antigen retrieval. Antibody LS-B351 dilution 1:500.

Requested From:

Japan

Laboratory Reagent For In Vitro Research Use Only

Not for resale without prior written consent from LifeSpan BioSciences, Inc.

Created on 9/23/2014

© 2014 LifeSpan BioSciences