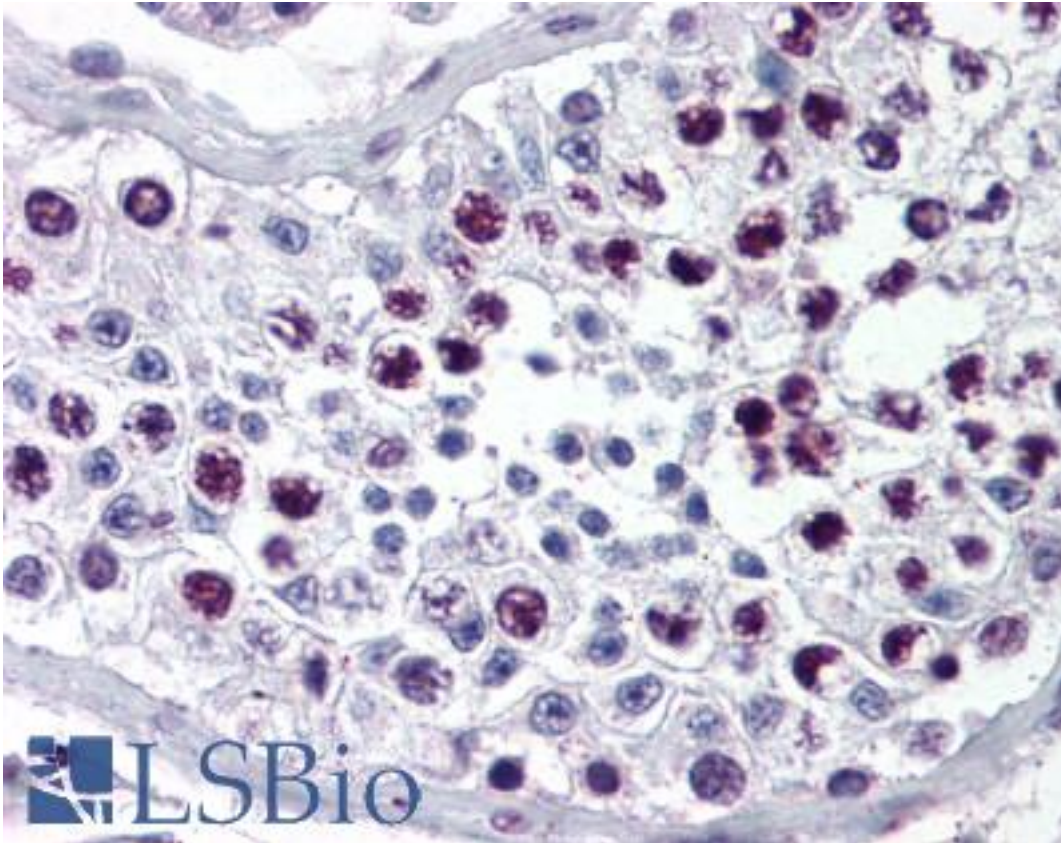


Cyclin A Rabbit anti-Human Polyclonal Antibody - LS-B349 - LSBio

CatalogID:	LS-B349
Validation:	This antibody replaces catalog number LS-C18972. It has been validated for use in the following assays: IHC.
Target:	Cyclin A
Host	Cyclin A antibody was produced in Rabbit
Clonality:	Polyclonal
Immunogen Species:	Cyclin A antibody was raised against Human
Antigen Type:	Recombinant protein
Immunogen:	Cyclin A antibody was raised against full length recombinant protein
Specificity:	Full length synthetic polypeptide corresponding to the human gene sequence.
Reactivity:	Human, Mouse, Rat
Purification:	Delipidated and defibrinated
Presentation:	Delipidated and defibrinated serum with 0.01% NaN3
Recommended Storage:	Long term: -20°C; Short term: +4°C. Avoid repeat freeze-thaw cycles.
Usage Summary:	Immunohistochemistry: LS-B349 was validated for use in immunohistochemistry on a panel of 21 formalin-fixed, paraffin-embedded (FFPE) human tissues after heat induced antigen retrieval in pH 6.0 citrate buffer. After incubation with the primary antibody, slides were incubated with biotinylated secondary antibody, followed by alkaline phosphatase-streptavidin and chromogen. The stained slides were evaluated by a pathologist to confirm staining specificity. The optimal working concentration for LS-B349 was determined to be 1:500.
Uses:	IHC - Paraffin (1:500), Immunofluorescence, Western blot, Immunoprecipitation, ELISA (Optimal dilution to be determined by the researcher)
Size:	50 µl
Concentration:	80 mg/ml

Immunohistochemistry Image:



Anti-Cyclin A antibody IHC of human testis. Immunohistochemistry of formalin-fixed, paraffin-embedded tissue after heat-induced antigen retrieval. Antibody LS-B349 dilution 1:500.

Requested From:

Japan

Laboratory Reagent For In Vitro Research Use Only

Not for resale without prior written consent from LifeSpan BioSciences, Inc.

Created on 9/23/2014

© 2014 LifeSpan BioSciences