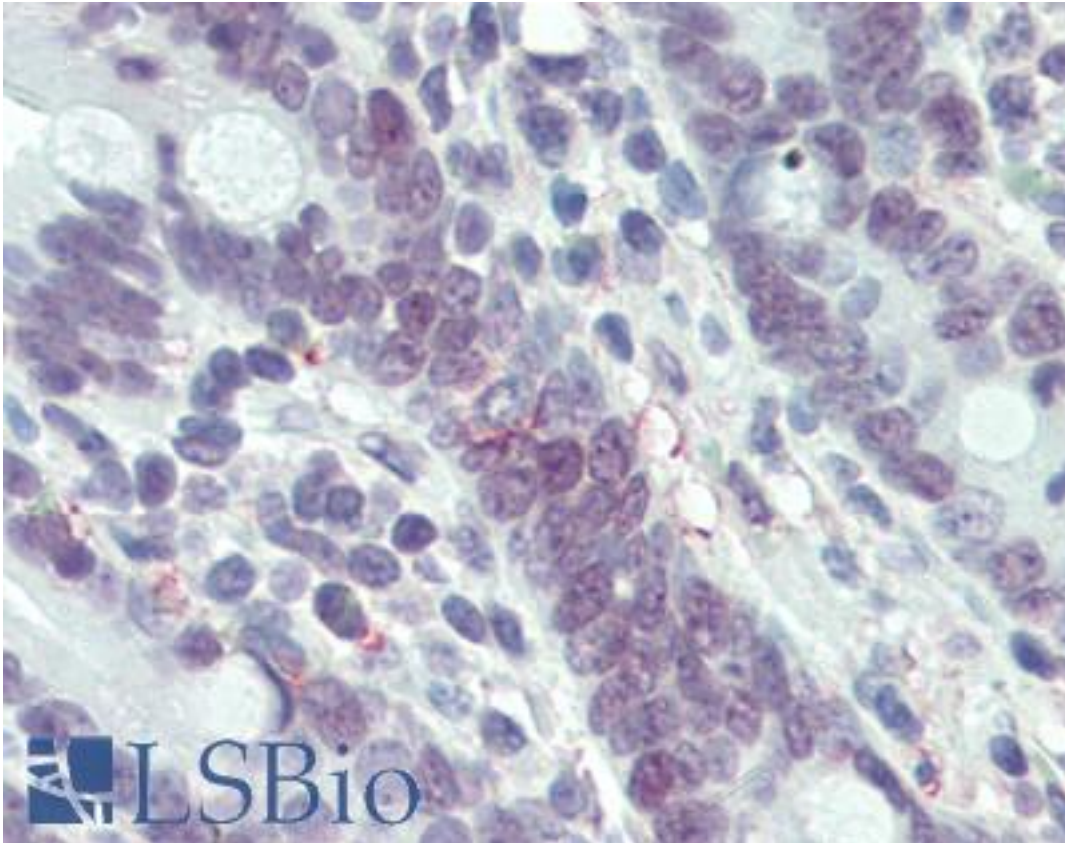


MLH1 Mouse anti-Human Monoclonal Antibody - LS-B3475 - LSBio

CatalogID:	LS-B3475
Validation:	This antibody replaces catalog number LS-C102880. It has been validated for use in the following assays: IHC-P.
Target:	mutL homolog 1 (MLH1)
Synonyms:	MLH1 Antibody, COCA2 Antibody, FCC2 Antibody, HMLH1 Antibody, HNPCC Antibody, HNPCC2 Antibody, MutL protein homolog 1 Antibody
Host	MLH1 antibody was produced in Mouse
Clonality:	Monoclonal
Isotype:	IgG1
Immunogen Species:	MLH1 antibody was raised against Human
Immunogen:	MLH1 antibody was raised against purified recombinant fragment of MLH1 (aa381-483) expressed in E. coli.
Reactivity:	Human, Monkey
Purification:	Ascites
Presentation:	Ascites fluid, 0.03% sodium azide.
Recommended Storage:	Short term 4°C, long term aliquot and store at -20°C, avoid freeze thaw cycles.
Usage Summary:	Immunohistochemistry: LS-B3475 was validated for use in immunohistochemistry on a panel of 21 formalin-fixed, paraffin-embedded (FFPE) human tissues after heat induced antigen retrieval in pH 6.0 citrate buffer. After incubation with the primary antibody, slides were incubated with biotinylated secondary antibody, followed by alkaline phosphatase-streptavidin and chromogen. The stained slides were evaluated by a pathologist to confirm staining specificity. The optimal working concentration for LS-B3475 was determined to be 1:200.
Uses:	IHC - Paraffin (1:200), Immunofluorescence (1:200 - 1:1000), Western blot (1:500 - 1:2000), ELISA (1:10000) (Optimal dilution to be determined by the researcher)
Size:	50 µl

Immunohistochemistry Image:



Anti-MLH1 antibody IHC of human small intestine. Immunohistochemistry of formalin-fixed, paraffin-embedded tissue after heat-induced antigen retrieval. Antibody LS-B3475 dilution 1:200.

Requested From:

Japan

Laboratory Reagent For In Vitro Research Use Only

Not for resale without prior written consent from LifeSpan BioSciences, Inc.

Created on 9/23/2014

© 2014 LifeSpan BioSciences