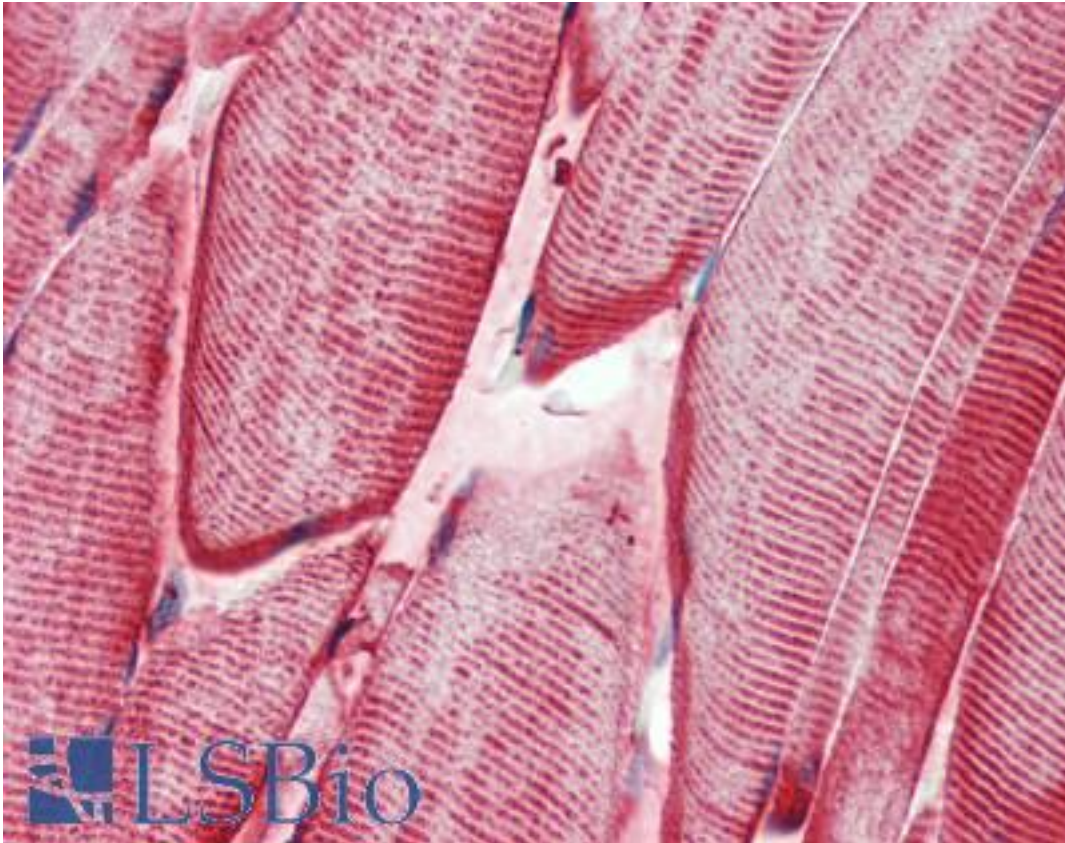


CRYAB / Alpha B Crystallin Mouse anti-Human Monoclonal Antibody - LS-B3474 - LSBio

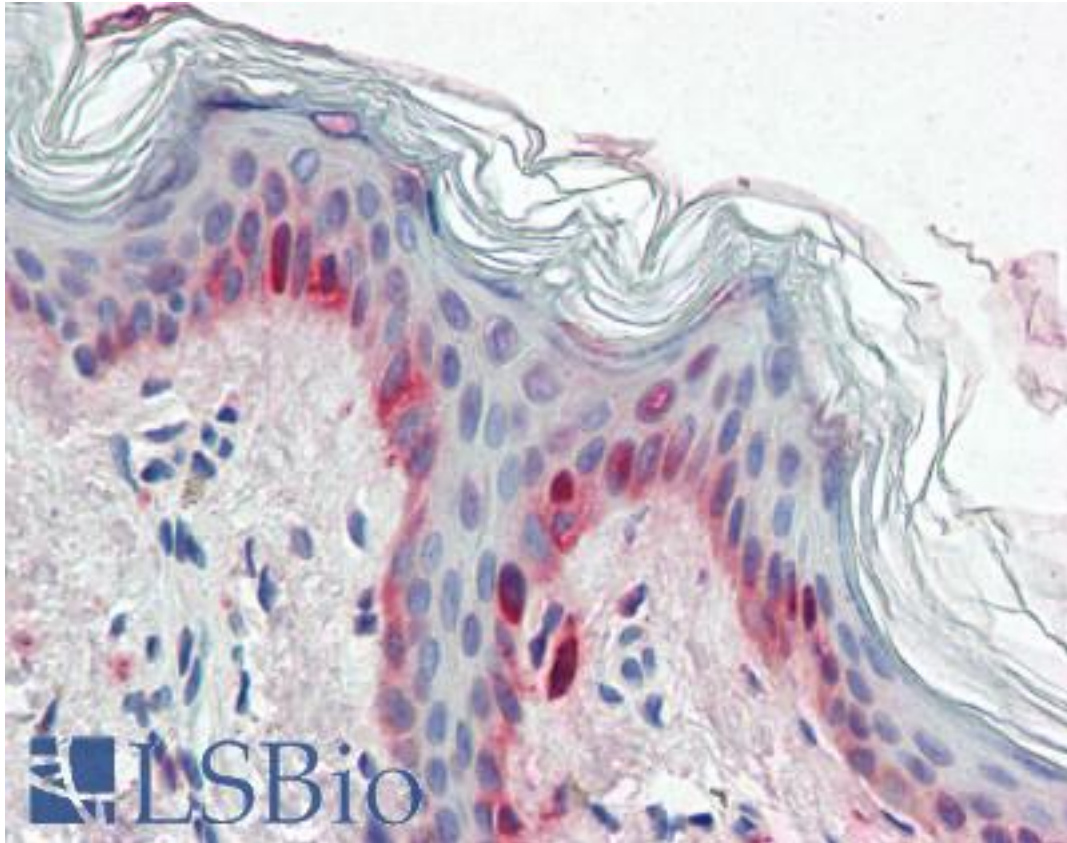
CatalogID:	LS-B3474
Validation:	This antibody replaces catalog number LS-C41529. It has been validated for use in the following assays: IHC-P.
Target:	crystallin, alpha B (CRYAB)
Synonyms:	CRYAB Antibody, Alpha-crystallin B chain Antibody, CRYA2 Antibody, Crystallin, alpha B Antibody, CTPP2 Antibody, Heat shock protein beta-5 Antibody, HSPB5 Antibody, Alpha B Crystallin Antibody, Alpha(B)-crystallin Antibody, Rosenthal fiber component Antibody, Heat-shock 20 kD like-protein Antibody
Host	CRYAB antibody was produced in Mouse
Clonality:	Monoclonal
Isotype:	IgG2a
Immunogen Species:	CRYAB / Alpha B Crystallin antibody was raised against Human
Immunogen:	CRYAB / Alpha B Crystallin antibody was raised against recombinant human CRYAB.
Specificity:	Purified full length recombinant CRYAB-Trx(aa1-175) is expressed in E. coli strain BL21 (DE3).
Reactivity:	Human
Purification:	Ascites
Presentation:	Ascites.
Recommended Storage:	+4°C or -20°C, Avoid repeated freezing and thawing.
Usage Summary:	Immunohistochemistry: LS-B3474 was validated for use in immunohistochemistry on a panel of 21 formalin-fixed, paraffin-embedded (FFPE) human tissues after heat induced antigen retrieval in pH 6.0 citrate buffer. After incubation with the primary antibody, slides were incubated with biotinylated secondary antibody, followed by alkaline phosphatase-streptavidin and chromogen. The stained slides were evaluated by a pathologist to confirm staining specificity. The optimal working concentration for LS-B3474 was determined to be 1:200.
Uses:	IHC - Paraffin (1:200), Western blot (1:500 - 1:2000), ELISA (1:10000) (Optimal dilution to be determined by the researcher)
Size:	50 µl

Immunohistochemistry Image:



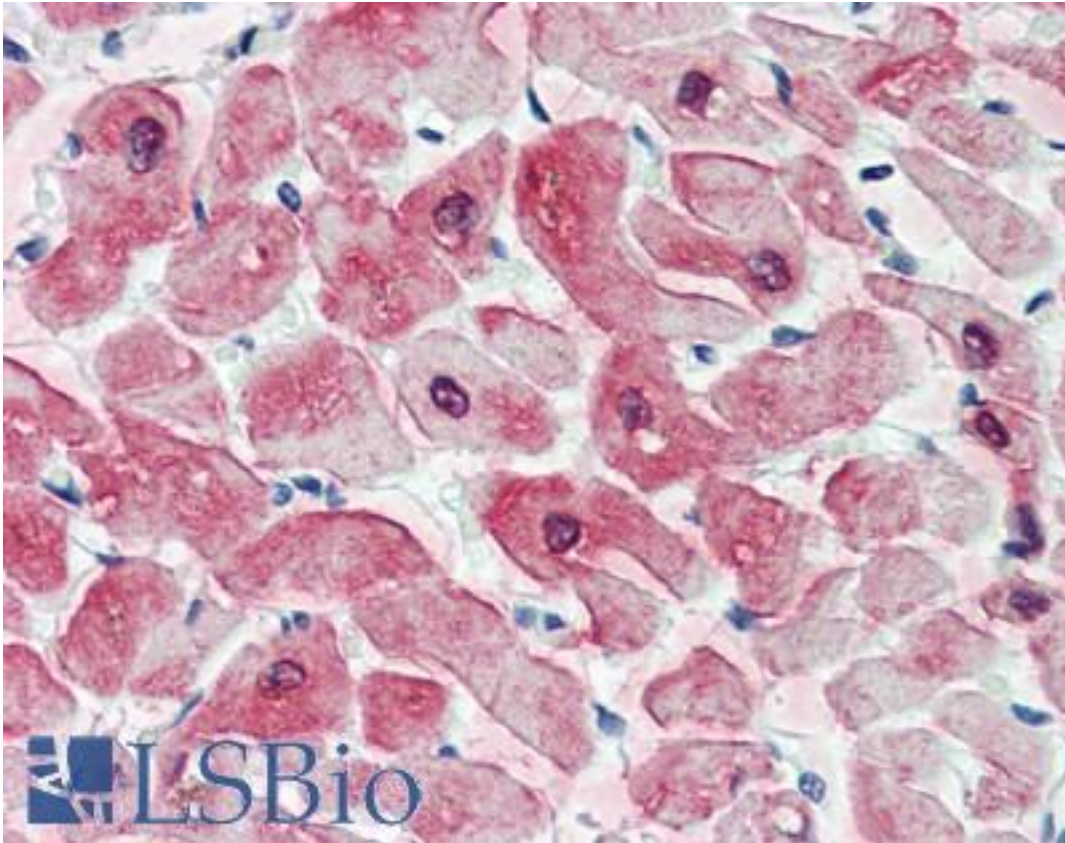
Anti-CRYAB / Alpha B Crystallin antibody IHC of human skeletal muscle.
Immunohistochemistry of formalin-fixed, paraffin-embedded tissue after heat-induced antigen retrieval. Antibody LS-B3474 dilution 1:200.

Immunohistochemistry Image:



Anti-CRYAB / Alpha B Crystallin antibody IHC of human skin. Immunohistochemistry of formalin-fixed, paraffin-embedded tissue after heat-induced antigen retrieval. Antibody LS-B3474 dilution 1:200.

Immunohistochemistry Image:



Anti-CRYAB / Alpha B Crystallin antibody IHC of human heart. Immunohistochemistry of formalin-fixed, paraffin-embedded tissue after heat-induced antigen retrieval. Antibody LS-B3474 dilution 1:200.

Western Blot Image:

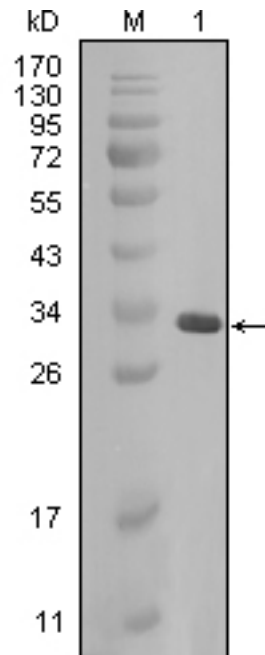


Figure 1: Western blot analysis using anti-human CRYAB monoclonal antibody against full-length CRYAB-Trx recombinant protein(1).

Requested From:

Japan

Laboratory Reagent For In Vitro Research Use Only

Not for resale without prior written consent from LifeSpan BioSciences, Inc.

Created on 9/23/2014

© 2014 LifeSpan BioSciences