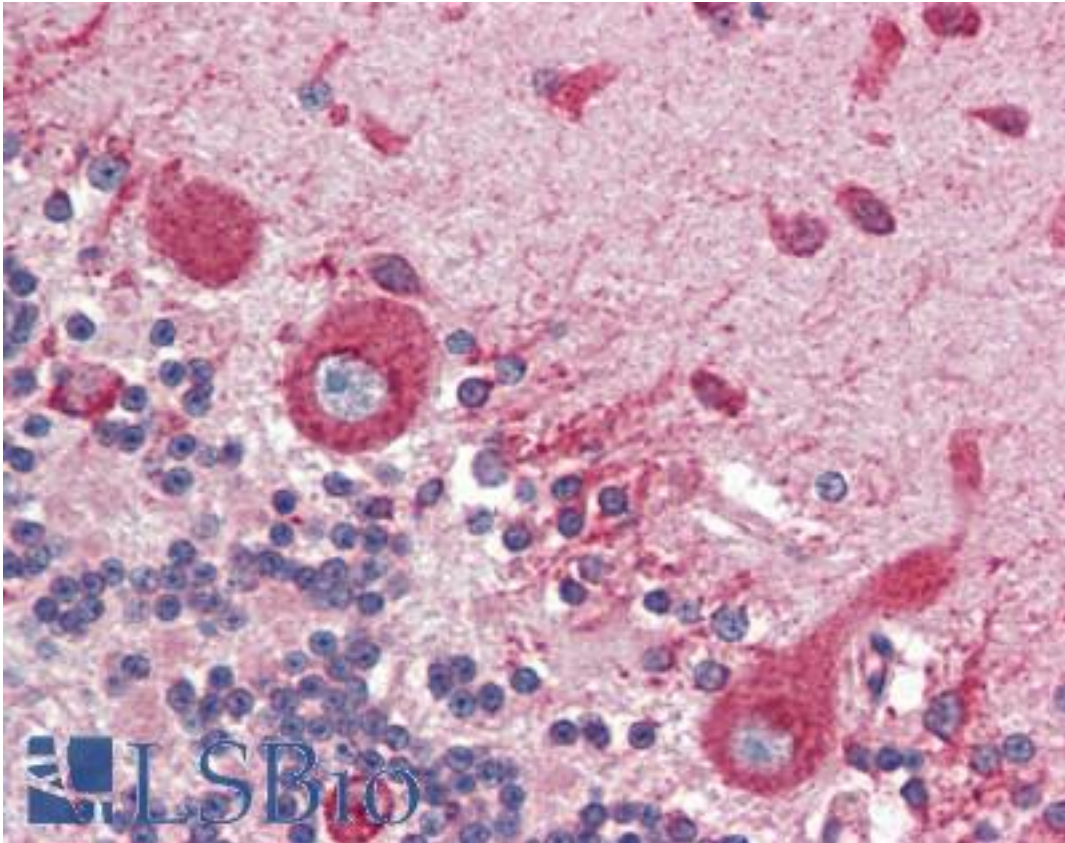


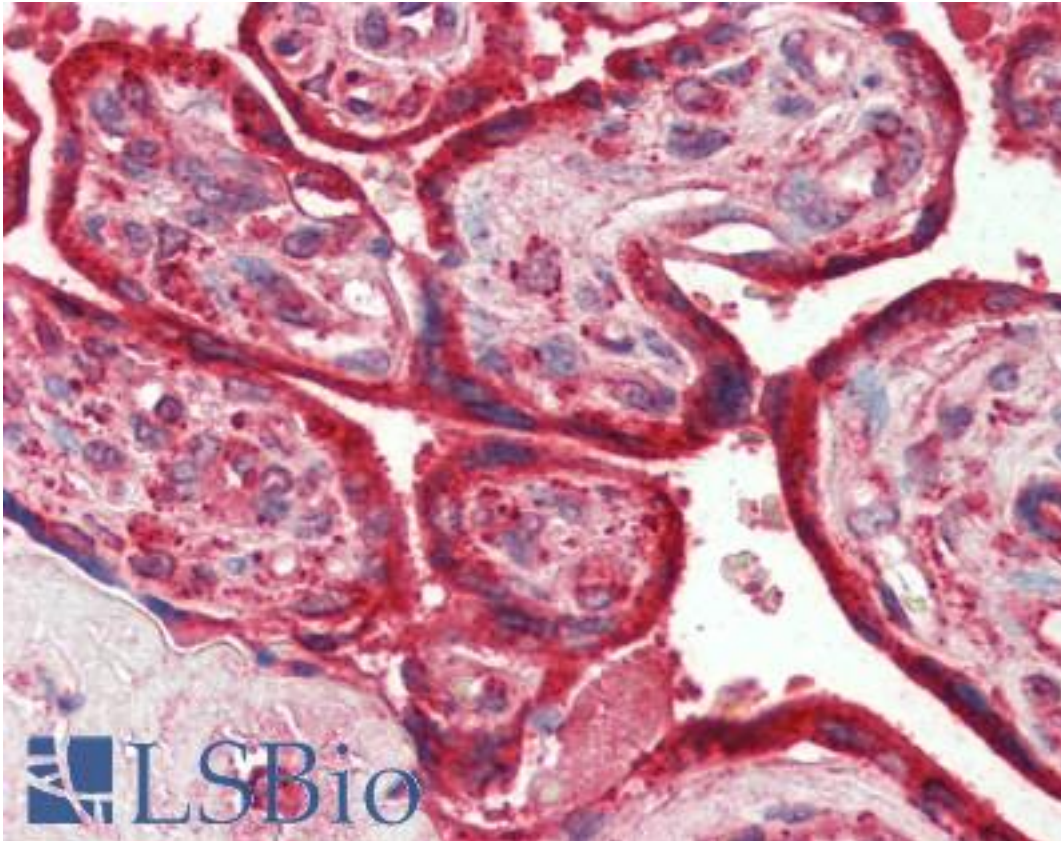
CALR / Calreticulin Mouse anti-Human Monoclonal (1G6A7) Antibody - LS-B3473 - LSBio	
<b>CatalogID:</b>	LS-B3473
<b>Validation:</b>	This antibody replaces catalog number LS-C41528. It has been validated for use in the following assays: IHC-P.
<b>Target:</b>	calreticulin
<b>Synonyms:</b>	CALR Antibody, Calregulin Antibody, CC1qR Antibody, CRP55 Antibody, CRT Antibody, CRTC Antibody, ERp60 Antibody, Grp60 Antibody, RO Antibody, SSA Antibody, Calreticulin Antibody, HACBP Antibody
<b>Host</b>	CALR antibody was produced in Mouse
<b>Clonality:</b>	Monoclonal
<b>Isotype:</b>	IgG2a
<b>Clone Name:</b>	1G6A7
<b>Immunogen Species:</b>	CALR / Calreticulin antibody was raised against Human
<b>Antigen Type:</b>	Synthetic peptide
<b>Immunogen:</b>	CALR / Calreticulin antibody was raised against synthetic peptide from human CALR / Calreticulin. Percent identity by BLAST analysis: Human, Gibbon, Monkey, Marmoset (100%); Gorilla (92%); Bat, Horse (85%).
<b>Specificity:</b>	Synthetic peptide corresponding to aa (EEEDVPGQAKDEL) of human Calreticulin
<b>Reactivity:</b>	Human, Gibbon, Monkey
<b>Predicted Reactivity:</b>	Gorilla
<b>Purification:</b>	Ascites
<b>Presentation:</b>	Ascites.
<b>Recommended Storage:</b>	+4°C or -20°C, Avoid repeated freezing and thawing.
<b>Usage Summary:</b>	Immunohistochemistry: LS-B3473 was validated for use in immunohistochemistry on a panel of 21 formalin-fixed, paraffin-embedded (FFPE) human tissues after heat induced antigen retrieval in pH 6.0 citrate buffer. After incubation with the primary antibody, slides were incubated with biotinylated secondary antibody, followed by alkaline phosphatase-streptavidin and chromogen. The stained slides were evaluated by a pathologist to confirm staining specificity. The optimal working concentration for LS-B3473 was determined to be 1:200.
<b>Uses:</b>	IHC - Paraffin (1:200), Immunofluorescence (1:200 - 1:1000), Western blot (1:500 - 1:2000), ELISA (1:10000) (Optimal dilution to be determined by the researcher)
<b>Size:</b>	50 µl

**Immunohistochemistry Image:**



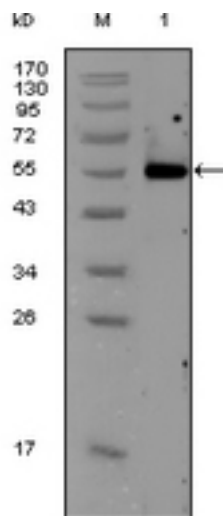
Anti-Calreticulin antibody IHC of human brain, cerebellum. Immunohistochemistry of formalin-fixed, paraffin-embedded tissue after heat-induced antigen retrieval. Antibody LS-B3473 dilution 1:200.

**Immunohistochemistry Image:**



Anti-Calreticulin antibody IHC of human placenta. Immunohistochemistry of formalin-fixed, paraffin-embedded tissue after heat-induced antigen retrieval. Antibody LS-B3473 dilution 1:200.

**Western Blot Image:**



**Figure 1:** Western blot analysis using Calreticulin monoclonal antibody against HeLa cell lysate(1).

<b>Requested From:</b>	Japan
Laboratory Reagent For In Vitro Research Use Only	
Not for resale without prior written consent from LifeSpan BioSciences, Inc.	
Created on 9/23/2014	
© 2014 LifeSpan BioSciences	