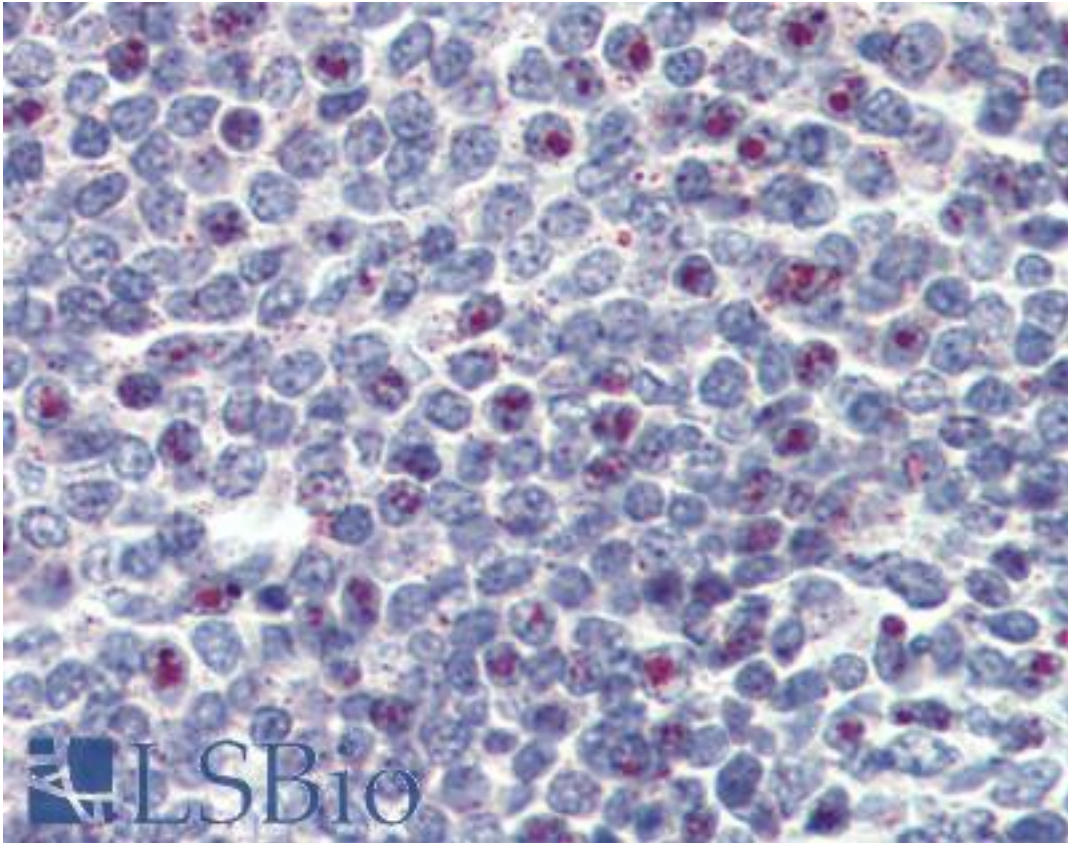


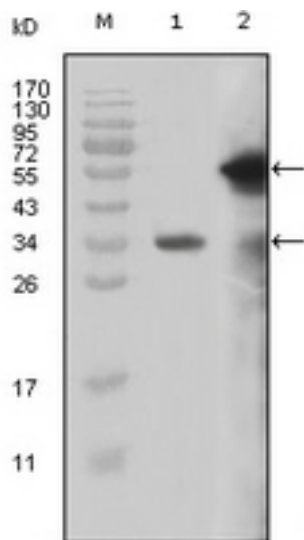
KMT2A Mouse anti-Human Monoclonal (aa3751-3968) Antibody - LS-B3471 - LSBio	
<b>CatalogID:</b>	LS-B3471
<b>Validation:</b>	This antibody replaces catalog number LS-C41523. It has been validated for use in the following assays: IHC-P.
<b>Target:</b>	lysine (K)-specific methyltransferase 2A (KMT2A)
<b>Synonyms:</b>	KMT2A Antibody, ALL1 Antibody, CDK6/MLL fusion protein Antibody, HRX Antibody, HTRX Antibody, HTRX1 Antibody, Lysine N-methyltransferase 2A Antibody, MLL1A Antibody, MLL/GAS7 Antibody, MLL1 Antibody, ALL-1 Antibody, MLL Antibody, MLL/GAS7 fusion protein Antibody, TRX1 Antibody, WDSTS Antibody, Trithorax-like protein Antibody, Zinc finger protein HRX Antibody, CXXC7 Antibody, MLL-AF4 der(11) fusion protein Antibody, MLL/GMPS fusion protein Antibody, TET1-MLL Antibody
<b>Host</b>	KMT2A antibody was produced in Mouse
<b>Clonality:</b>	Monoclonal
<b>Isotype:</b>	IgG1
<b>Immunogen Species:</b>	KMT2A antibody was raised against Human
<b>Immunogen:</b>	KMT2A antibody was raised against recombinant human MLL.
<b>Specificity:</b>	Purified truncated recombinant MLL-Trx(aa3751-3968) is expressed in E. coli strain BL21 (DE3).
<b>Epitope:</b>	aa3751-3968
<b>Reactivity:</b>	Human
<b>Purification:</b>	Ascites
<b>Presentation:</b>	Ascites.
<b>Usage Summary:</b>	Immunohistochemistry: LS-B3471 was validated for use in immunohistochemistry on a panel of 21 formalin-fixed, paraffin-embedded (FFPE) human tissues after heat induced antigen retrieval in pH 6.0 citrate buffer. After incubation with the primary antibody, slides were incubated with biotinylated secondary antibody, followed by alkaline phosphatase-streptavidin and chromogen. The stained slides were evaluated by a pathologist to confirm staining specificity. The optimal working concentration for LS-B3471 was determined to be 1:200.
<b>Uses:</b>	IHC - Paraffin (1:200), Western blot (1:500 - 1:2000), ELISA (1:10000) (Optimal dilution to be determined by the researcher)
<b>Size:</b>	50 µl

**Immunohistochemistry Image:**



Anti-MLL antibody IHC of human spleen. Immunohistochemistry of formalin-fixed, paraffin-embedded tissue after heat-induced antigen retrieval. Antibody LS-B3471 dilution 1:200.

**Western Blot Image:**



**Figure 1:** Western blot analysis using anti MLL monoclonal antibody against truncated MLL-Trx recombinant protein(1) and truncated GFP-MLL (aa3714-3969) transfected COS-7 cell lysate(2)

<b>Requested From:</b>	Japan
Laboratory Reagent For In Vitro Research Use Only	
Not for resale without prior written consent from LifeSpan BioSciences, Inc.	
Created on 9/23/2014	
© 2014 LifeSpan BioSciences	