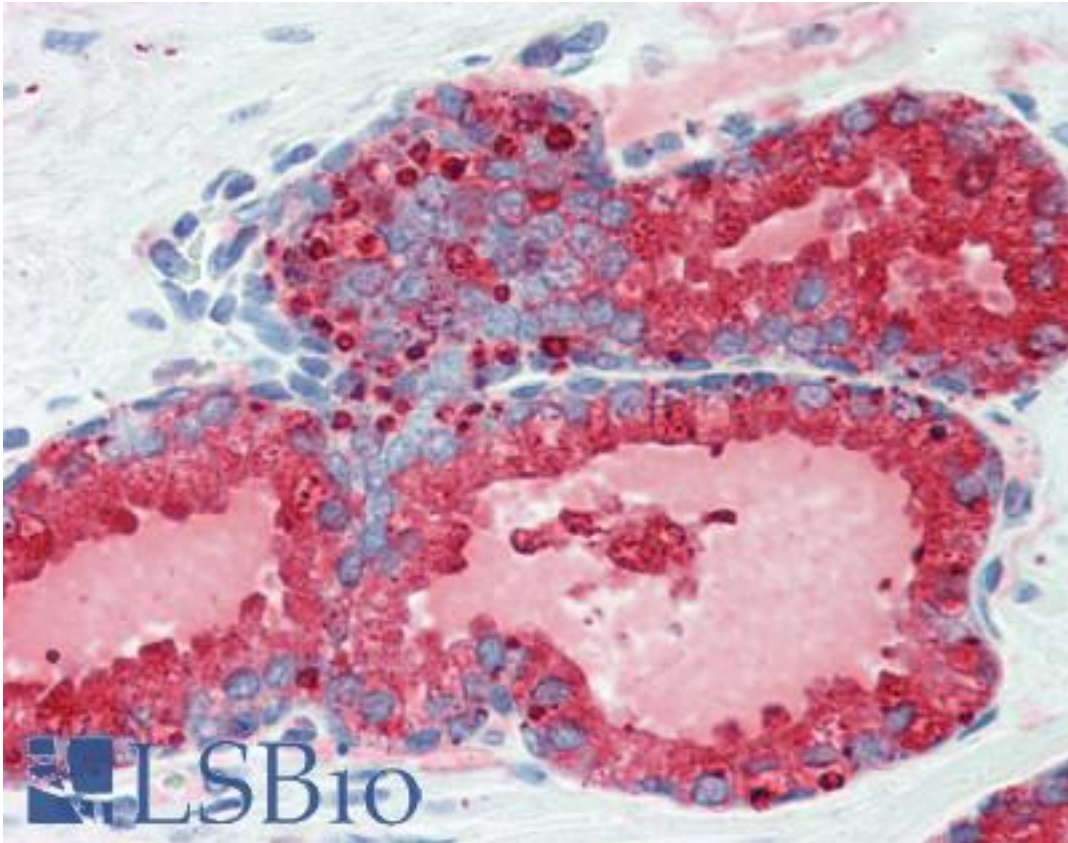


KLK3 / PSA Mouse anti-Human Monoclonal (aa26-251) (5A11E2) Antibody - LS-B3470 - LSBio	
CatalogID:	LS-B3470
Validation:	This antibody replaces catalog number LS-C41521. It has been validated for use in the following assays: IHC-P.
Target:	kallikrein-related peptidase 3 (KLK3)
Synonyms:	KLK3 Antibody, APS Antibody, Gamma-seminoprotein Antibody, Kallikrein-3 Antibody, Kallikrein-related peptidase 3 Antibody, P-30 antigen Antibody, Prostate specific antigen Antibody, Prostate-specific antigen Antibody, PSA Antibody, Semenogelase Antibody, KLK2A1 Antibody, Seminolin Antibody
Family / Subfamily:	Protease / Serine S1
Host	KLK3 antibody was produced in Mouse
Clonality:	Monoclonal
Isotype:	IgG1
Clone Name:	5A11E2
Immunogen Species:	KLK3 / PSA antibody was raised against Human
Immunogen:	KLK3 / PSA antibody was raised against recombinant human KLK3 / PSA.
Specificity:	Purified truncated recombinant KLK3-His(aa26-251) is expressed in E. Coli strain BL21 (DE3)
Epitope:	aa26-251
Reactivity:	Human
Purification:	Ascites
Presentation:	Ascites fluid, 0.03% sodium azide
Recommended Storage:	Short term 4°C, long term aliquot and store at -20°C, avoid freeze thaw cycles.
Usage Summary:	Immunohistochemistry: LS-B3470 was validated for use in immunohistochemistry on a panel of 21 formalin-fixed, paraffin-embedded (FFPE) human tissues after heat induced antigen retrieval in pH 6.0 citrate buffer. After incubation with the primary antibody, slides were incubated with biotinylated secondary antibody, followed by alkaline phosphatase-streptavidin and chromogen. The stained slides were evaluated by a pathologist to confirm staining specificity. The optimal working concentration for LS-B3470 was determined to be 1:200.
Uses:	IHC - Paraffin (1:200), Western blot (1:500 - 1:2000), Flow Cytometry (1:200 - 1:400), ELISA (1:10000) (Optimal dilution to be determined by the researcher)
Size:	50 µg
Concentration:	1 mg/ml

Immunohistochemistry Image:



Anti-KLK3 / PSA antibody IHC of human prostate. Immunohistochemistry of formalin-fixed, paraffin-embedded tissue after heat-induced antigen retrieval. Antibody LS-B3470 dilution 1:200.

Western Blot Image:

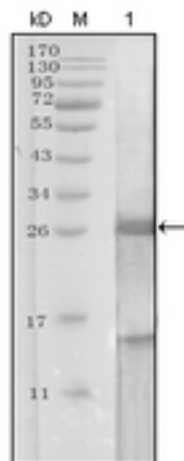


Figure 1: Western blot analysis using KLK3 monoclonal antibody against truncated KLK3-His recombinant protein(1).

Requested From:

Japan

Laboratory Reagent For In Vitro Research Use Only

Not for resale without prior written consent from LifeSpan BioSciences, Inc.

Created on 9/23/2014

© 2014 LifeSpan BioSciences