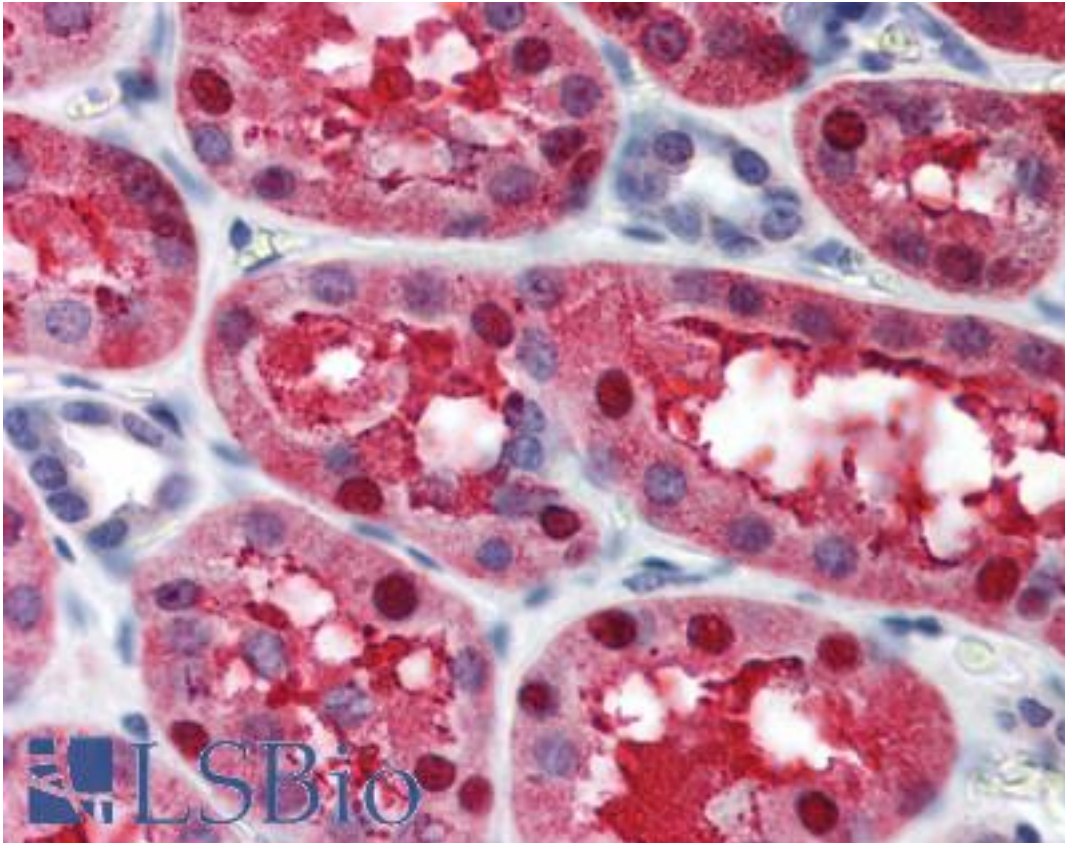


TIP120 / CAND1 Rabbit anti-Human Polyclonal (N-Terminus) Antibody - LS-B347 - LSBio	
<b>CatalogID:</b>	LS-B347
<b>Validation:</b>	This antibody replaces catalog number LS-C18987. It has been validated for use in the following assays: IHC.
<b>Target:</b>	cullin-associated and neddylation-dissociated 1 (CAND1)
<b>Synonyms:</b>	CAND1 Antibody, KIAA0829 Antibody, TBP interacting protein Antibody, TBP-interacting protein 120A Antibody, TIP120 Antibody, p120 CAND1 Antibody, TIP120A Antibody
<b>Host</b>	CAND1 antibody was produced in Rabbit
<b>Clonality:</b>	Polyclonal
<b>Immunogen Species:</b>	TIP120 / CAND1 antibody was raised against Human
<b>Antigen Type:</b>	Synthetic peptide
<b>Immunogen:</b>	TIP120 / CAND1 antibody was raised against synthetic peptide from human CAND1.
<b>Specificity:</b>	Amino acids 11-24 of Human CAND1/TIP120A (N-terminal) coupled to KLH.
<b>Epitope:</b>	N-Terminus
<b>Reactivity:</b>	Human
<b>Purification:</b>	Delipidated and defibrinated
<b>Presentation:</b>	Serum - liquid, 0.01% sodium azide.
<b>Recommended Storage:</b>	+4°C or -20°C, Avoid repeated freezing and thawing.
<b>Usage Summary:</b>	Immunohistochemistry: LS-B347 was validated for use in immunohistochemistry on a panel of 21 formalin-fixed, paraffin-embedded (FFPE) human tissues after heat induced antigen retrieval in pH 6.0 citrate buffer. After incubation with the primary antibody, slides were incubated with biotinylated secondary antibody, followed by alkaline phosphatase-streptavidin and chromogen. The stained slides were evaluated by a pathologist to confirm staining specificity. The optimal working concentration for LS-B347 was determined to be 1:500.
<b>Uses:</b>	IHC - Paraffin (1:500), Western blot (1:500 - 1:1000), Immunoprecipitation, ELISA (1:2000 - 1:10000) (Optimal dilution to be determined by the researcher)
<b>Size:</b>	50 µl

**Immunohistochemistry Image:**



Anti-CAND1 antibody IHC of human kidney. Immunohistochemistry of formalin-fixed, paraffin-embedded tissue after heat-induced antigen retrieval. Antibody LS-B347 dilution 1:500.

**Requested From:**

Japan

Laboratory Reagent For In Vitro Research Use Only

Not for resale without prior written consent from LifeSpan BioSciences, Inc.

Created on 9/23/2014

© 2014 LifeSpan BioSciences