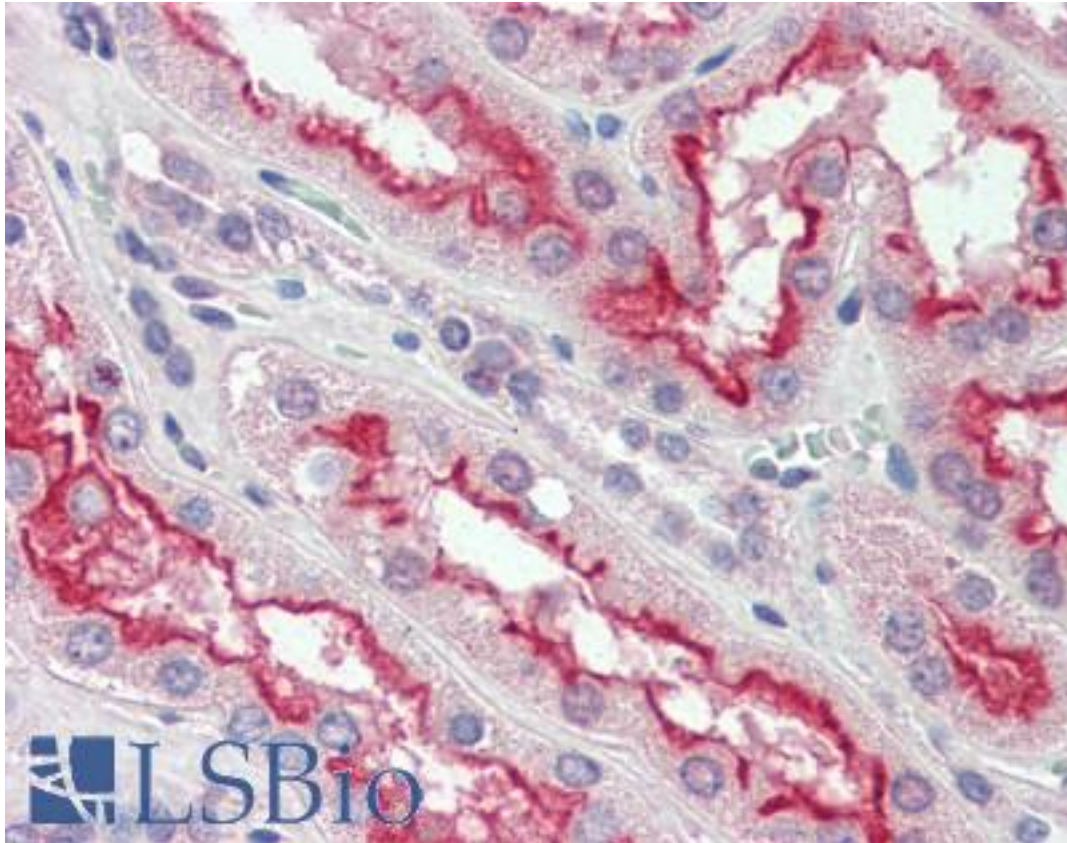


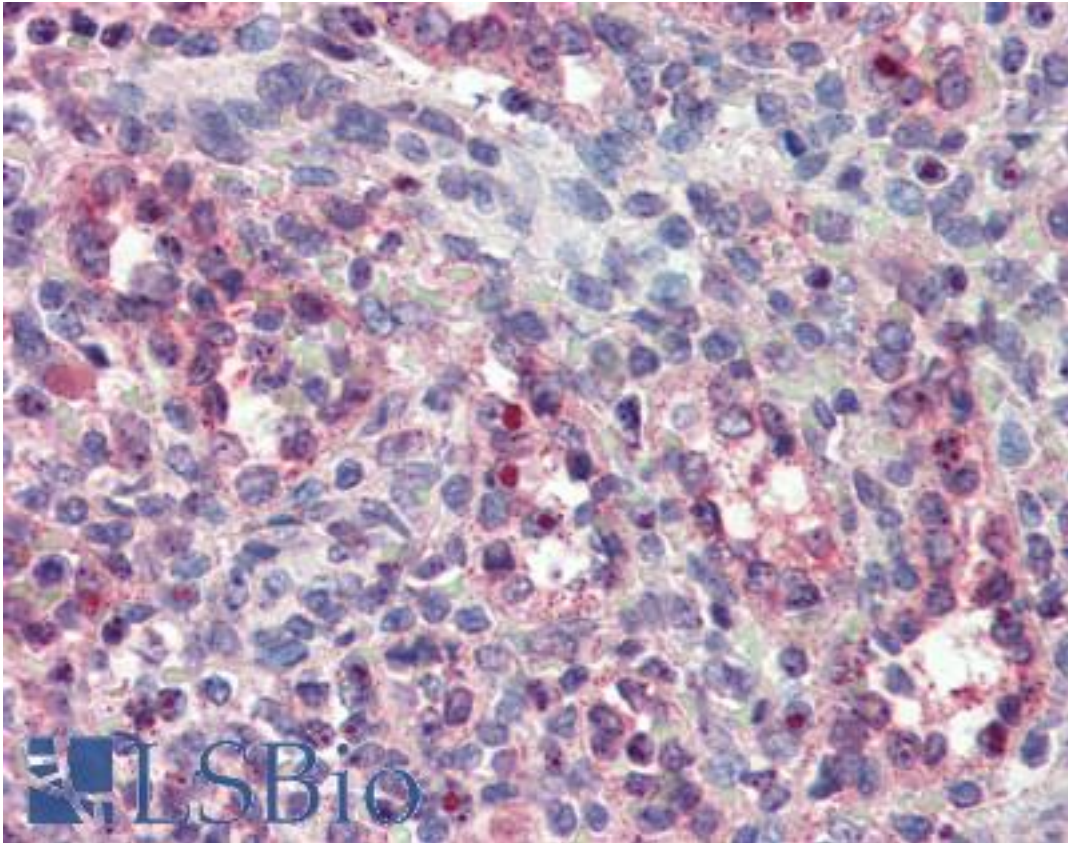
FER Mouse anti-Human Monoclonal (5D2C4) Antibody - LS-B3467 - LSBio	
CatalogID:	LS-B3467
Validation:	This antibody replaces catalog number LS-C41507. It has been validated for use in the following assays: IHC-P.
Target:	fer (fps/fes related) tyrosine kinase
Synonyms:	FER Antibody, c-fer Antibody, Fer kinase Antibody, p94-Fer Antibody, Phosphoprotein NCP94 Antibody, PPP1R74 Antibody, Proto-oncogene c-Fer Antibody, TYK3 Antibody, Tyrosine-protein kinase Fer Antibody, p94fer Antibody, Tyrosine kinase 3 Antibody, FerT Antibody
Family / Subfamily:	Protein Kinase / Fes (Fps)
Host	FER antibody was produced in Mouse
Clonality:	Monoclonal
Isotype:	IgG1
Clone Name:	5D2C4
Immunogen Species:	FER antibody was raised against Human
Immunogen:	FER antibody was raised against recombinant human FER.
Specificity:	Ni-NTA purified truncated recombinant FER-His expressed in E. Coli strain BL21 (DE3)
Reactivity:	Human
Purification:	Ascites
Presentation:	Ascites. Sourced in Ascites.
Recommended Storage:	+4°C or -20°C, Avoid repeated freezing and thawing.
Usage Summary:	Immunohistochemistry: LS-B3467 was validated for use in immunohistochemistry on a panel of 21 formalin-fixed, paraffin-embedded (FFPE) human tissues after heat induced antigen retrieval in pH 6.0 citrate buffer. After incubation with the primary antibody, slides were incubated with biotinylated secondary antibody, followed by alkaline phosphatase-streptavidin and chromogen. The stained slides were evaluated by a pathologist to confirm staining specificity. The optimal working concentration for LS-B3467 was determined to be 1:200.
Uses:	IHC - Paraffin (1:200), Western blot (1:500 - 1:2000), ELISA (1:10000) (Optimal dilution to be determined by the researcher)
Size:	50 µl

Immunohistochemistry Image:



Anti-FER antibody IHC of human kidney. Immunohistochemistry of formalin-fixed, paraffin-embedded tissue after heat-induced antigen retrieval. Antibody LS-B3467 dilution 1:200.

Immunohistochemistry Image:



Anti-FER antibody IHC of human spleen. Immunohistochemistry of formalin-fixed, paraffin-embedded tissue after heat-induced antigen retrieval. Antibody LS-B3467 dilution 1:200.

Western Blot Image:

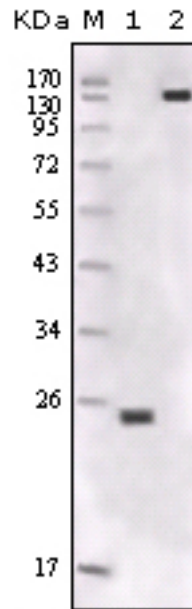


Figure 1: Western blot analysis using FER monoclonal antibody against truncated FER-His recombinant protein (1), NIH3T3 cell lysate (2).

Requested From:

Japan

Laboratory Reagent For In Vitro Research Use Only

Not for resale without prior written consent from LifeSpan BioSciences, Inc.

Created on 9/23/2014

© 2014 LifeSpan BioSciences