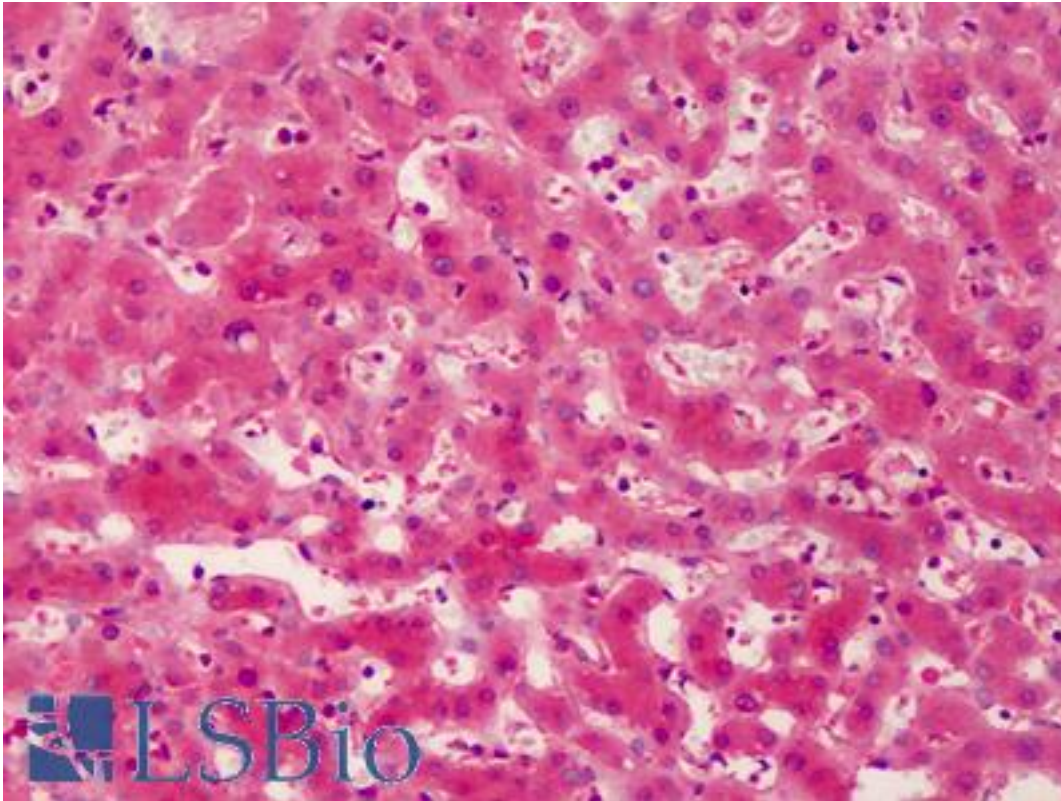


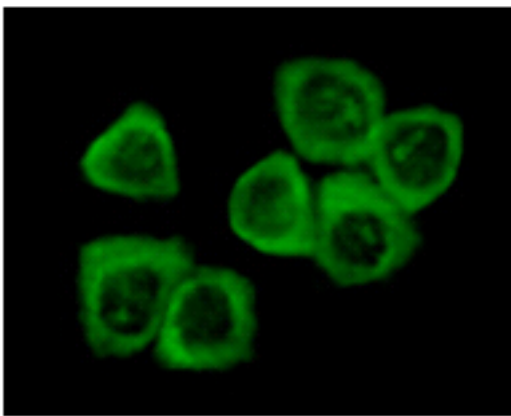
DDR2 Mouse anti-Human Monoclonal Antibody - LS-B3466 - LSBio	
CatalogID:	LS-B3466
Validation:	This antibody replaces catalog number LS-C41505. It has been validated for use in the following assays: IHC-P.
Target:	discoidin domain receptor tyrosine kinase 2 (DDR2)
Synonyms:	DDR2 Antibody, CD167b antigen Antibody, Discoidin domain receptor 2 Antibody, Hydroxyaryl-protein kinase Antibody, MIG20a Antibody, Tyrosine-protein kinase TYRO10 Antibody, NTRKR3 Antibody, TYRO10 Antibody, Tyrosylprotein kinase Antibody
Family / Subfamily:	Protein Kinase / DDR/TKT
Host	DDR2 antibody was produced in Mouse
Clonality:	Monoclonal
Isotype:	IgG2a
Immunogen Species:	DDR2 antibody was raised against Human
Immunogen:	DDR2 antibody was raised against recombinant human DDR2.
Specificity:	Ni-NTA purified truncated recombinant DDR2-Trx expressed in E. Coli strain BL21 (DE3)
Reactivity:	Human
Purification:	Ascites
Presentation:	Ascites.
Recommended Storage:	Long term: -20°C; Short term: +4°C. Avoid repeat freeze-thaw cycles.
Usage Summary:	Immunohistochemistry: LS-B3466 was validated for use in immunohistochemistry on a panel of 21 formalin-fixed, paraffin-embedded (FFPE) human tissues after heat induced antigen retrieval in pH 6.0 citrate buffer. After incubation with the primary antibody, slides were incubated with biotinylated secondary antibody, followed by alkaline phosphatase-streptavidin and chromogen. The stained slides were evaluated by a pathologist to confirm staining specificity. The optimal working concentration for LS-B3466 was determined to be 1:200.
Uses:	IHC - Paraffin (1:200), Immunofluorescence (1:200 - 1:1000), Western blot (1:500 - 1:2000), ELISA (1:10000) (Optimal dilution to be determined by the researcher)
Size:	50 µl

Immunohistochemistry Image:



Anti-DDR2 antibody IHC of human liver. Immunohistochemistry of formalin-fixed, paraffin-embedded tissue after heat-induced antigen retrieval. Antibody LS-B3466 dilution 1:200.

Immunofluorescence Image:



Gc-7901 Cells

Figure 2: Immunofluorescence staining of methanol-fixed Gc-7901 cells showing cytoplasm localization

Western Blot Image:

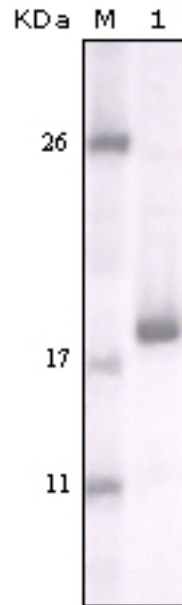


Figure 1: Western blot analysis using DDR2 monoclonal antibody against truncated DDR2-Trx recombinant protein.

Requested From:

Japan

Laboratory Reagent For In Vitro Research Use Only

Not for resale without prior written consent from LifeSpan BioSciences, Inc.

Created on 9/23/2014

© 2014 LifeSpan BioSciences