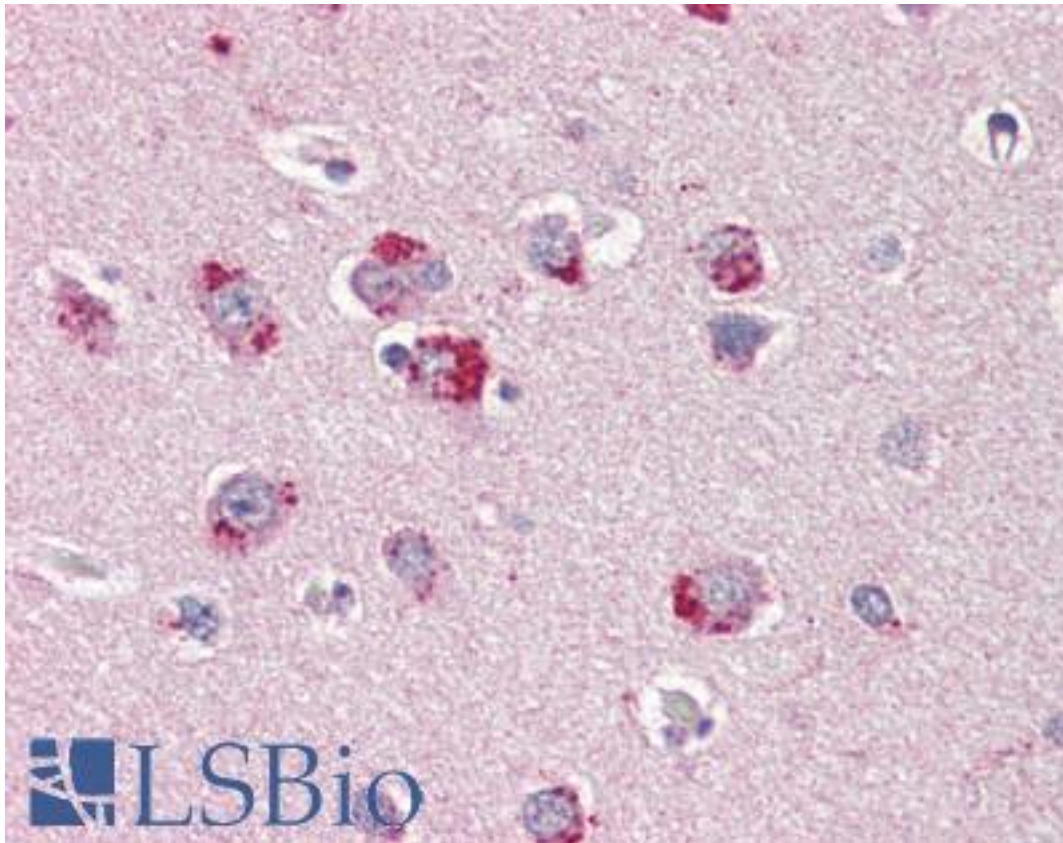


SORL1 Mouse anti-Human Monoclonal Antibody - LS-B3464 - LSBio

CatalogID:	LS-B3464
Validation:	This antibody replaces catalog number LS-C41503. It has been validated for use in the following assays: IHC-P.
Target:	sortilin-related receptor, L(DLR class) A repeats containing (SORL1)
Synonyms:	SORL1 Antibody, C11orf32 Antibody, LR11 Antibody, LRP9 Antibody, gp250 Antibody, Mosaic protein LR11 Antibody, SorLA-1 Antibody, SORLA Antibody, Sortilin-related receptor Antibody
Host	SORL1 antibody was produced in Mouse
Clonality:	Monoclonal
Isotype:	IgG1
Immunogen Species:	SORL1 antibody was raised against Human
Immunogen:	SORL1 antibody was raised against recombinant human SORL1.
Specificity:	Purified truncated recombinant SORL1-MBP expressed in E. Coli strain BL21 (DE3)
Reactivity:	Human
Purification:	Ascites
Presentation:	Ascites, 0.03% sodium azide.
Recommended Storage:	+4°C or -20°C, Avoid repeated freezing and thawing.
Usage Summary:	Immunohistochemistry: LS-B3464 was validated for use in immunohistochemistry on a panel of 21 formalin-fixed, paraffin-embedded (FFPE) human tissues after heat induced antigen retrieval in pH 6.0 citrate buffer. After incubation with the primary antibody, slides were incubated with biotinylated secondary antibody, followed by alkaline phosphatase-streptavidin and chromogen. The stained slides were evaluated by a pathologist to confirm staining specificity. The optimal working concentration for LS-B3464 was determined to be 1:200.
Uses:	IHC - Paraffin (1:200), Immunofluorescence (1:200 - 1:1000), Western blot (1:500 - 1:2000), ELISA (1:10000) (Optimal dilution to be determined by the researcher)
Size:	50 µl

Immunohistochemistry Image:



Anti-SORL1 antibody IHC of human brain, cortex. Immunohistochemistry of formalin-fixed, paraffin-embedded tissue after heat-induced antigen retrieval. Antibody LS-B3464 dilution 1:200.

Western Blot Image:

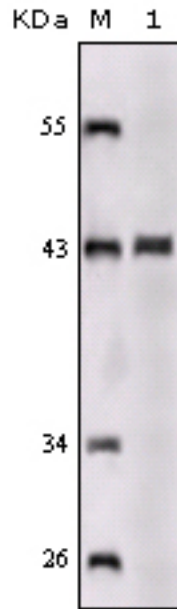


Figure 1: Western blot analysis using SORL1 monoclonal antibody against truncated SORL1-MBP recombinant protein.

Requested From:

Japan

Laboratory Reagent For In Vitro Research Use Only

Not for resale without prior written consent from LifeSpan BioSciences, Inc.

Created on 9/23/2014

© 2014 LifeSpan BioSciences