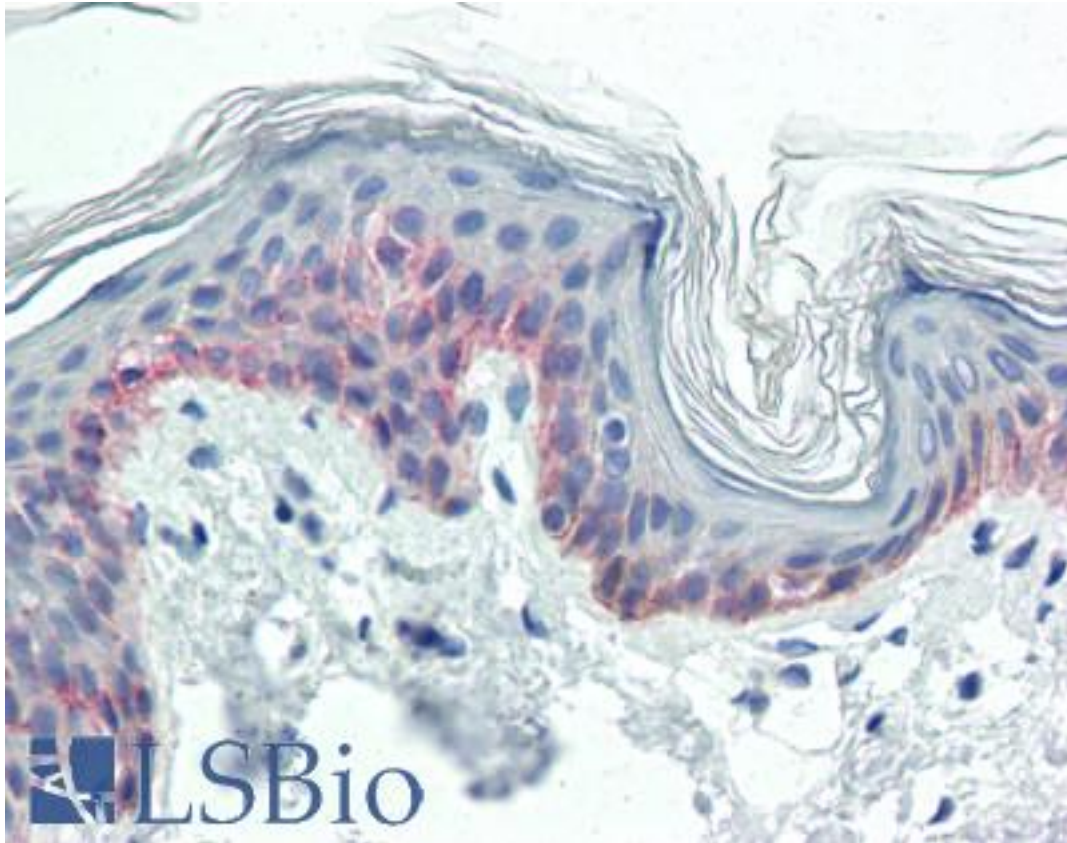


KRT5 / CK5 / Cytokeratin 5 Mouse anti-Human Monoclonal Antibody - LS-B3463 - LSBio	
CatalogID:	LS-B3463
Validation:	This antibody replaces catalog number LS-C41500. It has been validated for use in the following assays: IHC-P.
Target:	keratin 5 (KRT5)
Synonyms:	KRT5 Antibody, 58 kd cytokeratin Antibody, 58 kDa cytokeratin Antibody, CK5 Antibody, CK-5 Antibody, Cytokeratin-5 Antibody, DDD Antibody, EBS2 Antibody, Keratin 5 Antibody, KRT5A Antibody, Type-II keratin Kb5 Antibody, Cytokeratin 5 Antibody, K5 Antibody, Keratin-5 Antibody
Family / Subfamily:	Keratin / not assigned-Keratin
Host	KRT5 antibody was produced in Mouse
Clonality:	Monoclonal
Isotype:	IgG1
Immunogen Species:	KRT5 / CK5 / Cytokeratin 5 antibody was raised against Human
Immunogen:	KRT5 / CK5 / Cytokeratin 5 antibody was raised against recombinant human KRT5 / Cytokeratin 5.
Specificity:	Ni-NTA purified truncated recombinant CK5-Trx-His expressed in E. Coli strain BL21 (DE3)
Reactivity:	Human
Purification:	Ascites
Presentation:	Ascites.
Recommended Storage:	Store at -20°C or lower. Aliquot to avoid repeated freezing and thawing.
Usage Summary:	Immunohistochemistry: LS-B3463 was validated for use in immunohistochemistry on a panel of 21 formalin-fixed, paraffin-embedded (FFPE) human tissues after heat induced antigen retrieval in pH 6.0 citrate buffer. After incubation with the primary antibody, slides were incubated with biotinylated secondary antibody, followed by alkaline phosphatase-streptavidin and chromogen. The stained slides were evaluated by a pathologist to confirm staining specificity. The optimal working concentration for LS-B3463 was determined to be 1:200.
Uses:	IHC - Paraffin (1:200), Western blot (1:500 - 1:2000), ELISA (1:10000) (Optimal dilution to be determined by the researcher)
Size:	50 µl

Immunohistochemistry Image:



Anti-KRT5 / Cytokeratin 5 antibody IHC of human skin. Immunohistochemistry of formalin-fixed, paraffin-embedded tissue after heat-induced antigen retrieval. Antibody LS-B3463 dilution 1:200.

Western Blot Image:

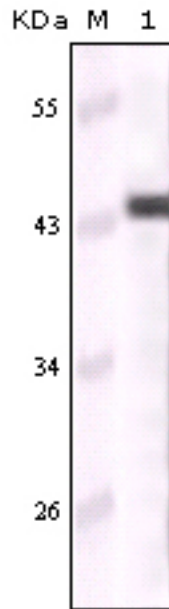


Figure 1: Western blot analysis using CK5 monoclonal antibody against truncated CK5-Trx-His recombinant protein.

Requested From:

Japan

Laboratory Reagent For In Vitro Research Use Only

Not for resale without prior written consent from LifeSpan BioSciences, Inc.

Created on 9/23/2014

© 2014 LifeSpan BioSciences