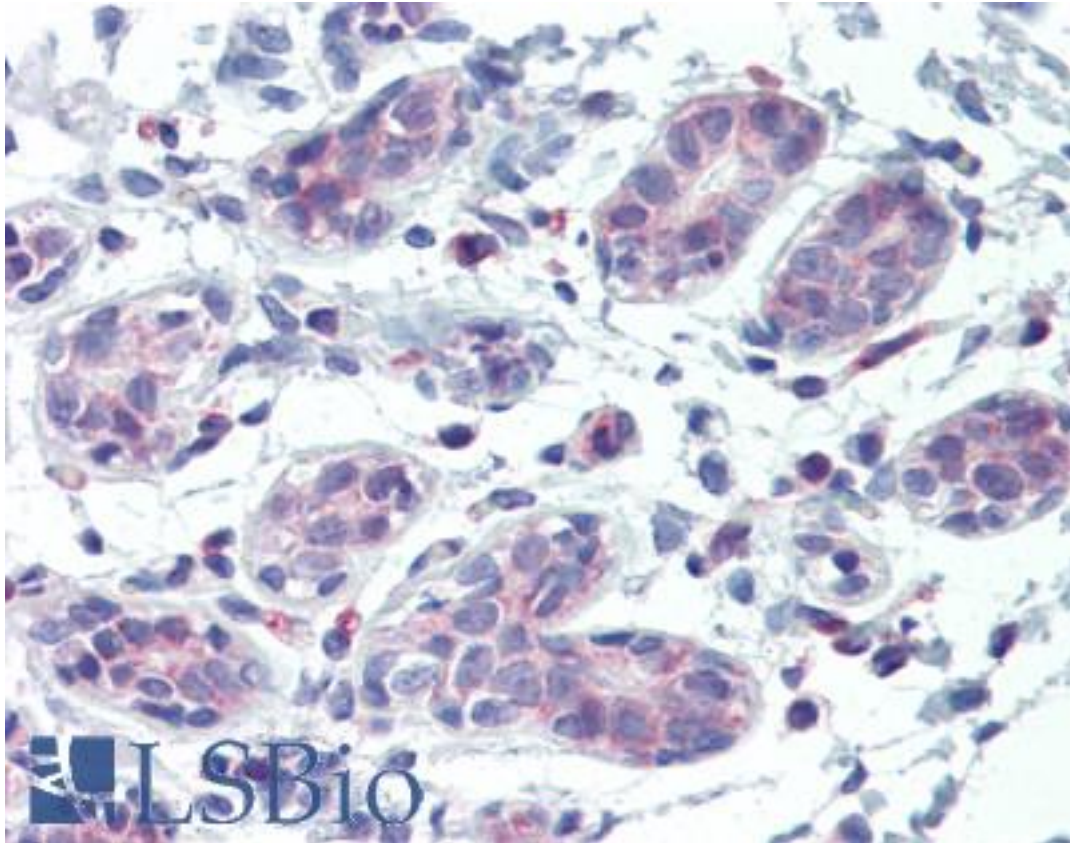


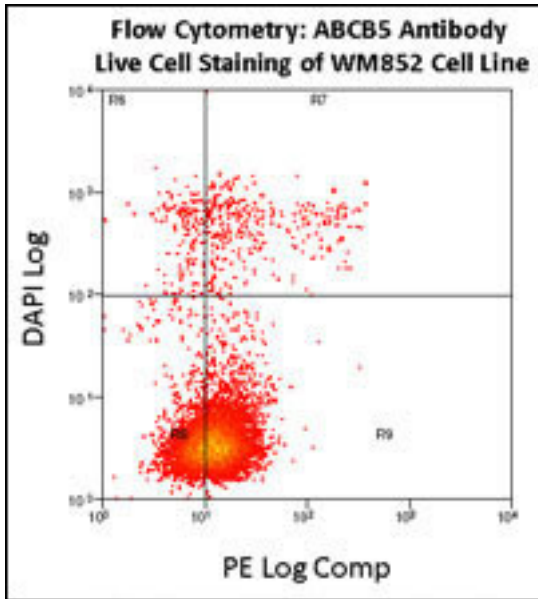
ABCB5 Rabbit anti-Human Polyclonal (N-Terminus) Antibody - LS-B3454 - LSBio	
CatalogID:	LS-B3454
Validation:	This antibody replaces catalog number LS-C100370. It has been validated for use in the following assays: IHC-P.
Target:	ATP-binding cassette, sub-family B (MDR/TAP), member 5 (ABCB5)
Synonyms:	ABCB5 Antibody, ABCB5alpha Antibody, ABCB5 P-gp Antibody, ABCB5beta Antibody, ATP-binding cassette protein Antibody, EST422562 Antibody, P-glycoprotein ABCB5 Antibody
Family / Subfamily:	Transporter / ATP-binding cassette - ABCB/MDR
Host	ABCB5 antibody was produced in Rabbit
Clonality:	Polyclonal
Immunogen Species:	ABCB5 antibody was raised against Human
Antigen Type:	Synthetic peptide
Immunogen:	ABCB5 antibody was raised against kLH conjugated synthetic peptide selected from the N-terminal region of human ABCB5.
Epitope:	N-Terminus
Reactivity:	Human
Purification:	Ammonium sulfate precipitation
Presentation:	PBS, 0.09% sodium azide
Recommended Storage:	Maintain refrigerated at 2-8°C for up to 6 months. For long term storage store at -20°C.
Usage Summary:	Immunohistochemistry: LS-B3454 was validated for use in immunohistochemistry on a panel of 21 formalin-fixed, paraffin-embedded (FFPE) human tissues after heat induced antigen retrieval in pH 6.0 citrate buffer. After incubation with the primary antibody, slides were incubated with biotinylated secondary antibody, followed by alkaline phosphatase-streptavidin and chromogen. The stained slides were evaluated by a pathologist to confirm staining specificity. The optimal working concentration for LS-B3454 was determined to be 10 ug/ml.
Uses:	IHC - Paraffin (10 µg/ml), Western blot (1:1000), Flow Cytometry (1:10 - 1:50) (Optimal dilution to be determined by the researcher)
Size:	200 µl

Immunohistochemistry Image:



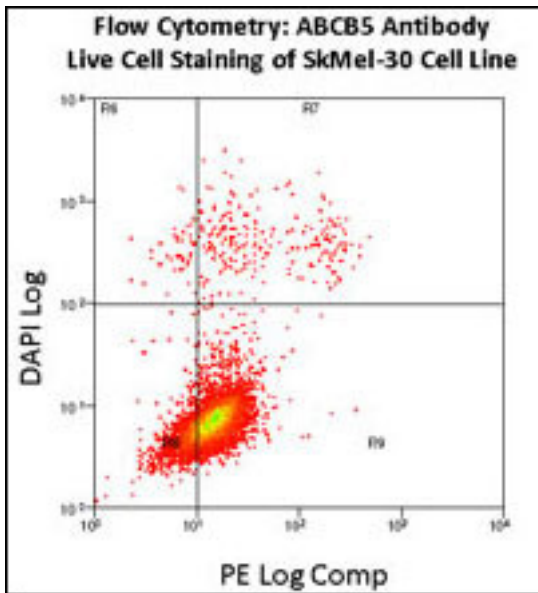
Anti-ABC5 antibody IHC of human breast. Immunohistochemistry of formalin-fixed, paraffin-embedded tissue after heat-induced antigen retrieval. Antibody LS-B3454 concentration 10 ug/ml.

Flow Cytometry Image:



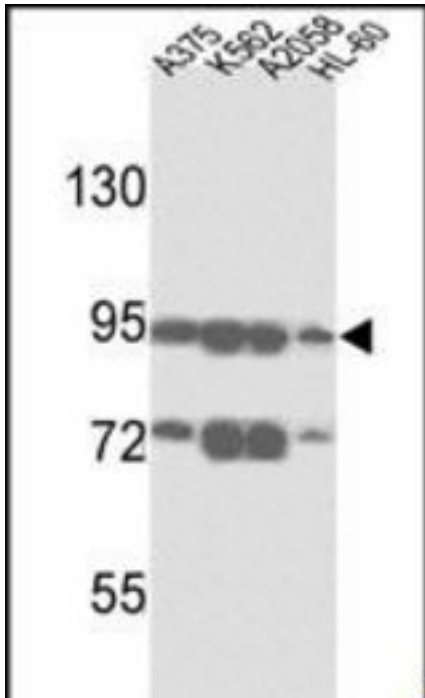
Flow Cytometry using ABCB5 Antibody (N-Term) Cat.# LS-B3454 on WM852 cell line. Live cell staining utilized PE-conjugated goat anti-rabbit (Jackson ImmunoResearch) as a secondary antibody. Analysis was done on an FC500 flow cytometer. Data courtesy of Dr. Steve Reuland, University of Colorado, Denver

Flow Cytometry Image:



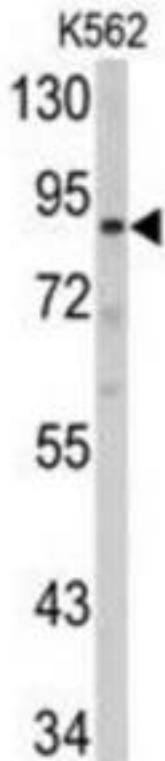
Flow Cytometry using ABCB5 Antibody (N-Term) Cat.# LS-B3454 on SkMel-30 cell line. Live cell staining utilized PE-conjugated goat anti-rabbit (Jackson ImmunoResearch) as a secondary antibody. Analysis was done on an FC500 flow cytometer. Data courtesy of Dr. Steve Reuland, University of Colorado, Denver

Western Blot Image:



Western blot analysis of ABCB5 Antibody (N-term) in A375, K562, A2058 and HL-60 cell line lysates (35 ug/lane). ABCB5 (arrow) was detected using the purified Pab.

Western Blot Image:



Western blot of K562 cell line lysates (35 ug/lane).

Requested From:

Japan

Laboratory Reagent For In Vitro Research Use Only

Not for resale without prior written consent from LifeSpan BioSciences, Inc.

Created on 9/23/2014

© 2014 LifeSpan BioSciences