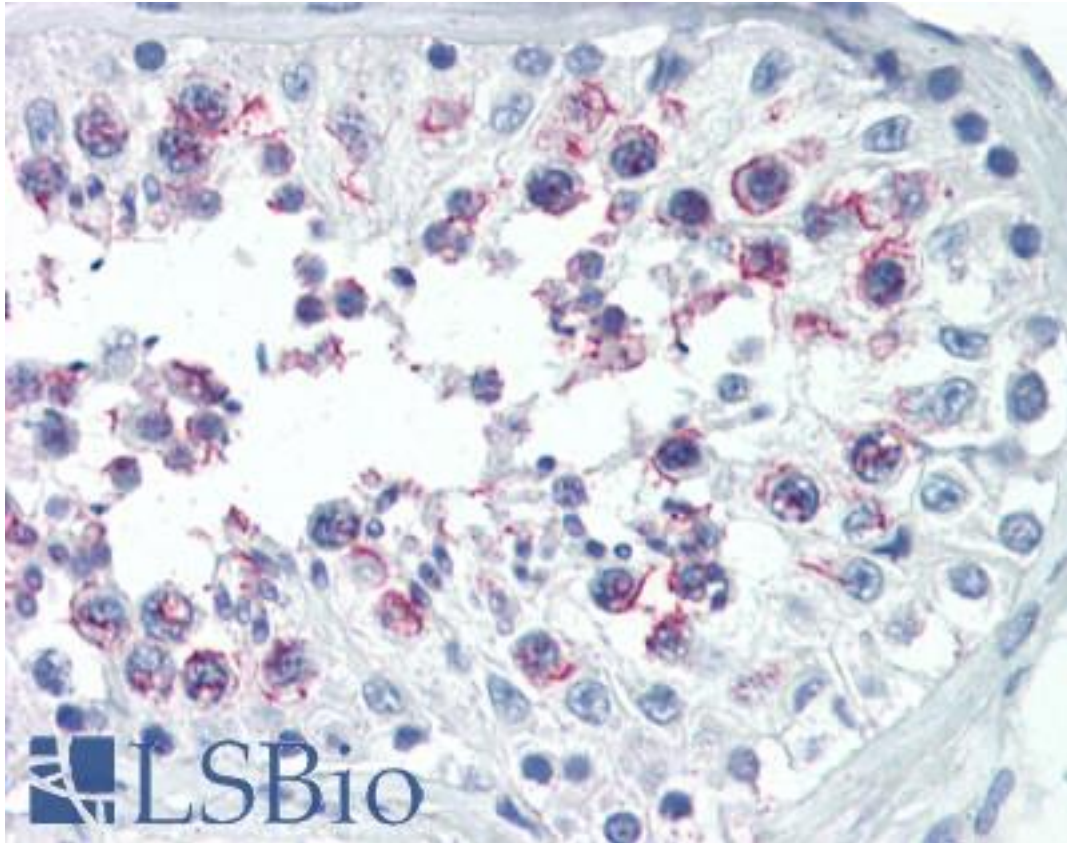


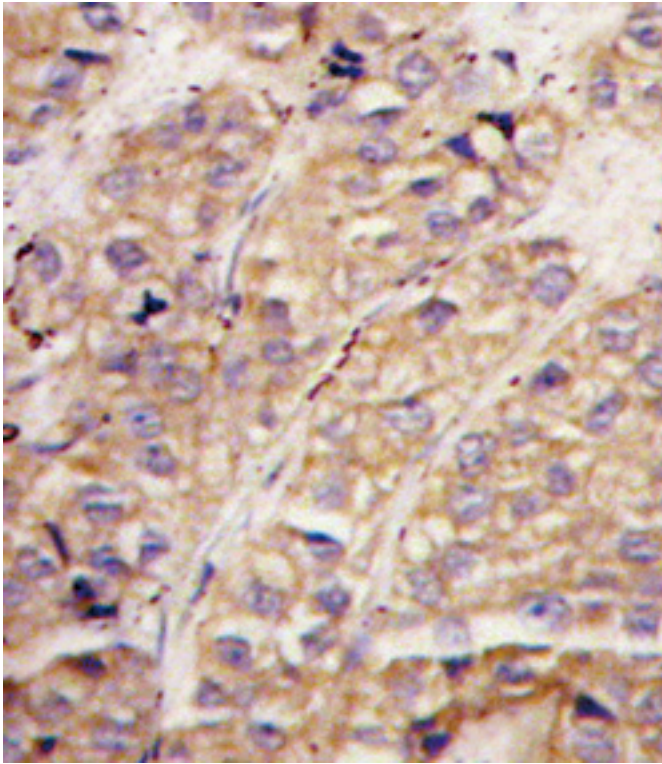
SMURF1 Rabbit anti-Human Polyclonal (N-Terminus) Antibody - LS-B3450 - LSBio	
CatalogID:	LS-B3450
Validation:	This antibody replaces catalog number LS-C98003. It has been validated for use in the following assays: IHC-P.
Target:	SMAD specific E3 ubiquitin protein ligase 1 (SMURF1)
Synonyms:	SMURF1 Antibody, E3 ubiquitin ligase SMURF1 Antibody, KIAA1625 Antibody, HSMURF1 Antibody
Host	SMURF1 antibody was produced in Rabbit
Clonality:	Polyclonal
Immunogen Species:	SMURF1 antibody was raised against Human
Antigen Type:	Synthetic peptide
Immunogen:	SMURF1 antibody was raised against kLH conjugated synthetic peptide selected from the N-terminal region of human SMURF1.
Epitope:	N-Terminus
Reactivity:	Human, Mouse
Purification:	Ammonium sulfate precipitation
Presentation:	PBS, 0.09% sodium azide
Recommended Storage:	Maintain refrigerated at 2-8°C for up to 6 months. For long term storage store at -20°C.
Usage Summary:	Immunohistochemistry: LS-B3450 was validated for use in immunohistochemistry on a panel of 21 formalin-fixed, paraffin-embedded (FFPE) human tissues after heat induced antigen retrieval in pH 6.0 citrate buffer. After incubation with the primary antibody, slides were incubated with biotinylated secondary antibody, followed by alkaline phosphatase-streptavidin and chromogen. The stained slides were evaluated by a pathologist to confirm staining specificity. The optimal working concentration for LS-B3450 was determined to be 10 ug/ml. Please note that cross-reactivity with mouse has been confirmed in WB only at this time. The antibody has not been evaluated for use in IHC with mouse samples.
Uses:	IHC - Paraffin (10 µg/ml), Western blot (1:1000) (Optimal dilution to be determined by the researcher)
Size:	200 µl

Immunohistochemistry Image:



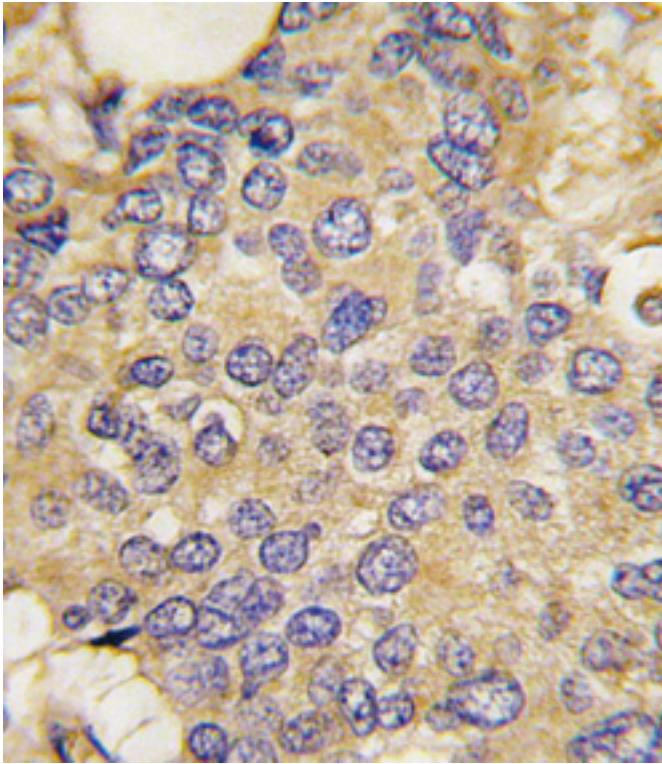
Anti-SMURF1 antibody IHC of human testis. Immunohistochemistry of formalin-fixed, paraffin-embedded tissue after heat-induced antigen retrieval. Antibody LS-B3450 concentration 10 ug/ml.

Immunohistochemistry Image:



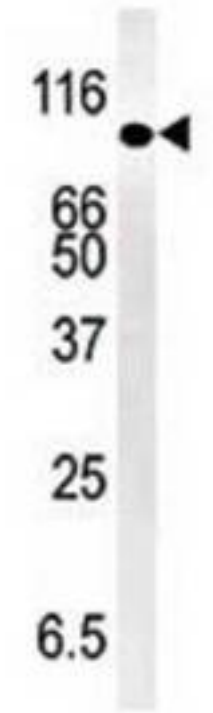
Formalin-fixed and paraffin-embedded human breast carcinoma tissue reacted with hSMURF1-W81 , which was peroxidase-conjugated to the secondary antibody, followed by DAB staining. This data demonstrates the use of this antibody for immunohistochemistry; clinical relevance has not been evaluated.

Immunohistochemistry Image:



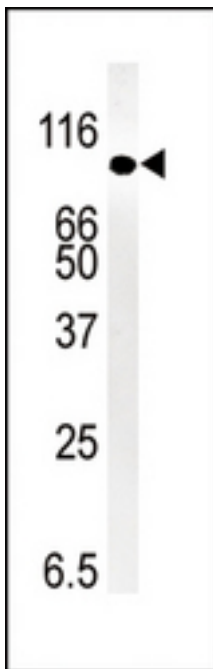
Formalin-fixed and paraffin-embedded human Testis tissue reacted with hSMURF1-W81 , which was peroxidase-conjugated to the secondary antibody, followed by AEC staining. This data demonstrates the use of this antibody for immunohistochemistry; clinical relevance has not been evaluated.

Western Blot Image:



Western blot of mouse kidney tissue lysate (35 ug/lane).

Western Blot Image:



Western blot analysis of anti-SMURF1 Pab in mouse kidney tissue lysate (35 ug/lane). SMURF1 (arrow) was detected using the purified Pab.

Requested From:

Japan

Laboratory Reagent For In Vitro Research Use Only

Not for resale without prior written consent from LifeSpan BioSciences, Inc.

Created on 9/23/2014

© 2014 LifeSpan BioSciences