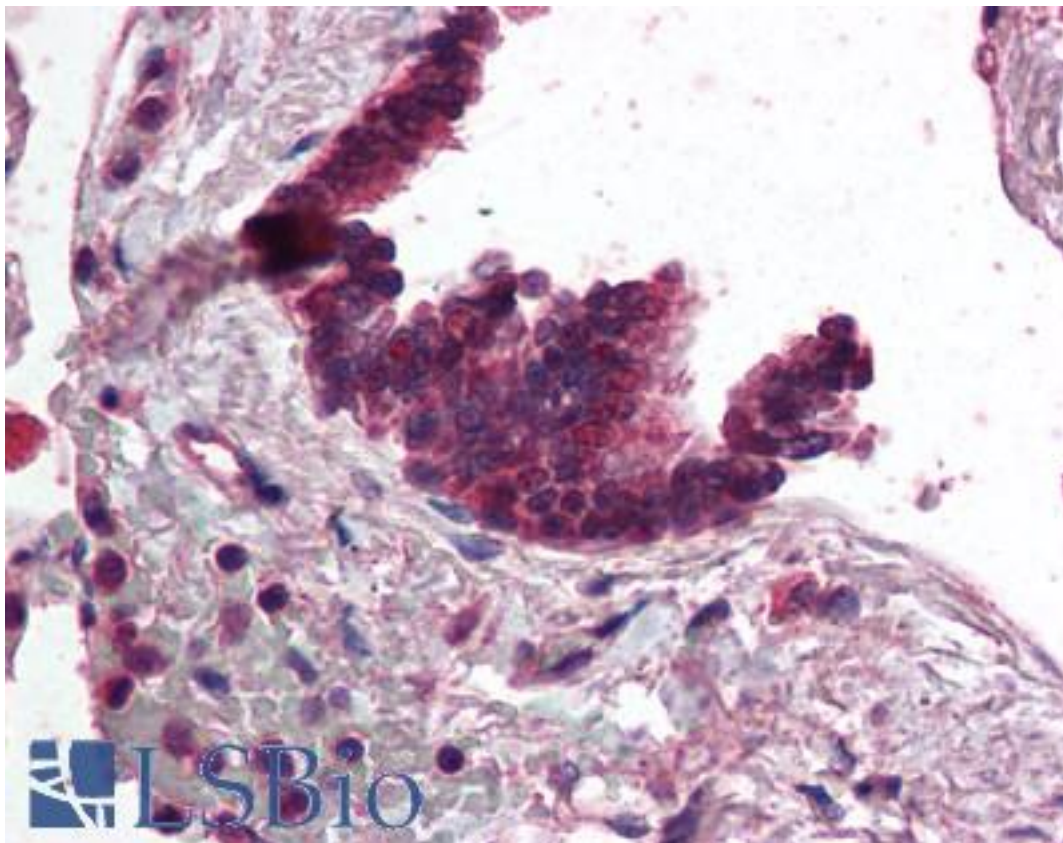


**AP3D1 / AP3 Goat anti-Human Polyclonal (aa686-698) Antibody - LS-B345 - LSBio**

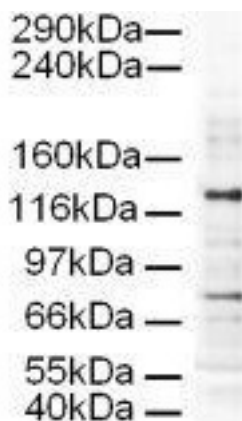
<b>CatalogID:</b>	LS-B345
<b>Validation:</b>	This antibody replaces catalog number LS-C18927. It has been validated for use in the following assays: IHC.
<b>Target:</b>	adaptor-related protein complex 3, delta 1 subunit (AP3D1)
<b>Synonyms:</b>	AP3D1 Antibody, ADTD Antibody, Adaptin, delta Antibody, AP-3 complex subunit delta Antibody, AP-3 complex subunit delta-1 Antibody, Delta adaptin Antibody, Delta-adaptin Antibody, Delta-adaptin, partial CDS Antibody, Ap-3 complex delta subunit Antibody, HBLVR Antibody
<b>Host</b>	AP3D1 antibody was produced in Goat
<b>Clonality:</b>	Polyclonal
<b>Immunogen Species:</b>	AP3D1 / AP3 antibody was raised against Human
<b>Antigen Type:</b>	Synthetic peptide
<b>Immunogen:</b>	AP3D1 / AP3 antibody was raised against synthetic peptide from human AP3D1 / AP3.
<b>Specificity:</b>	aa 686-698 of Human AP3D1.
<b>Epitope:</b>	aa686-698
<b>Reactivity:</b>	Human, Chimpanzee, Chicken
<b>Purification:</b>	Immunoaffinity purified
<b>Presentation:</b>	0.02 M potassium phosphate, 0.15 M sodium chloride, pH 7.2, 0.01% sodium azide.
<b>Recommended Storage:</b>	+4°C or -20°C, Avoid repeated freezing and thawing.
<b>Usage Summary:</b>	Immunohistochemistry: LS-B345 was validated for use in immunohistochemistry on a panel of 21 formalin-fixed, paraffin-embedded (FFPE) human tissues after heat induced antigen retrieval in pH 6.0 citrate buffer. After incubation with the primary antibody, slides were incubated with biotinylated secondary antibody, followed by alkaline phosphatase-streptavidin and chromogen. The stained slides were evaluated by a pathologist to confirm staining specificity. The optimal working concentration for LS-B345 was determined to be 2.5 ug/ml.
<b>Uses:</b>	IHC - Paraffin (2.5 µg/ml), Western blot (1:500 - 1:2000), ELISA (1:5000 - 1:20000) (Optimal dilution to be determined by the researcher)
<b>Size:</b>	50 µg
<b>Concentration:</b>	1 mg/ml

**Immunohistochemistry Image:**



Anti-AP3D1 antibody IHC of human lung, respiratory epithelium. Immunohistochemistry of formalin-fixed, paraffin-embedded tissue after heat-induced antigen retrieval. Antibody LS-B345 concentration 5 ug/ml.

**Western Blot Image:**



Anti-AP3D1 Antibody - Western Blot. Western blot of Affinity Purified anti-AP3D1 antibody shows detection of a 130-kD band corresponding to Human AP3D1 in a HeLa whole cell lysate. The lower molecular weight band most likely represents non-specific binding. Approximately 20 ug of lysate was run on a SDS-PAGE and transferred onto nitrocellulose followed by reaction with a 1:500 dilution of anti-AP3D1 antibody. Detection occurred using a 1:5000 dilution of HRP-labeled Rabbit anti-Goat IgG for 1 hour at room temperature. A chemiluminescence system was used for signal detection (Roche) using a 30-sec exposure time.

<b>Requested From:</b>	Japan
Laboratory Reagent For In Vitro Research Use Only	
Not for resale without prior written consent from LifeSpan BioSciences, Inc.	
Created on 9/23/2014	
© 2014 LifeSpan BioSciences	