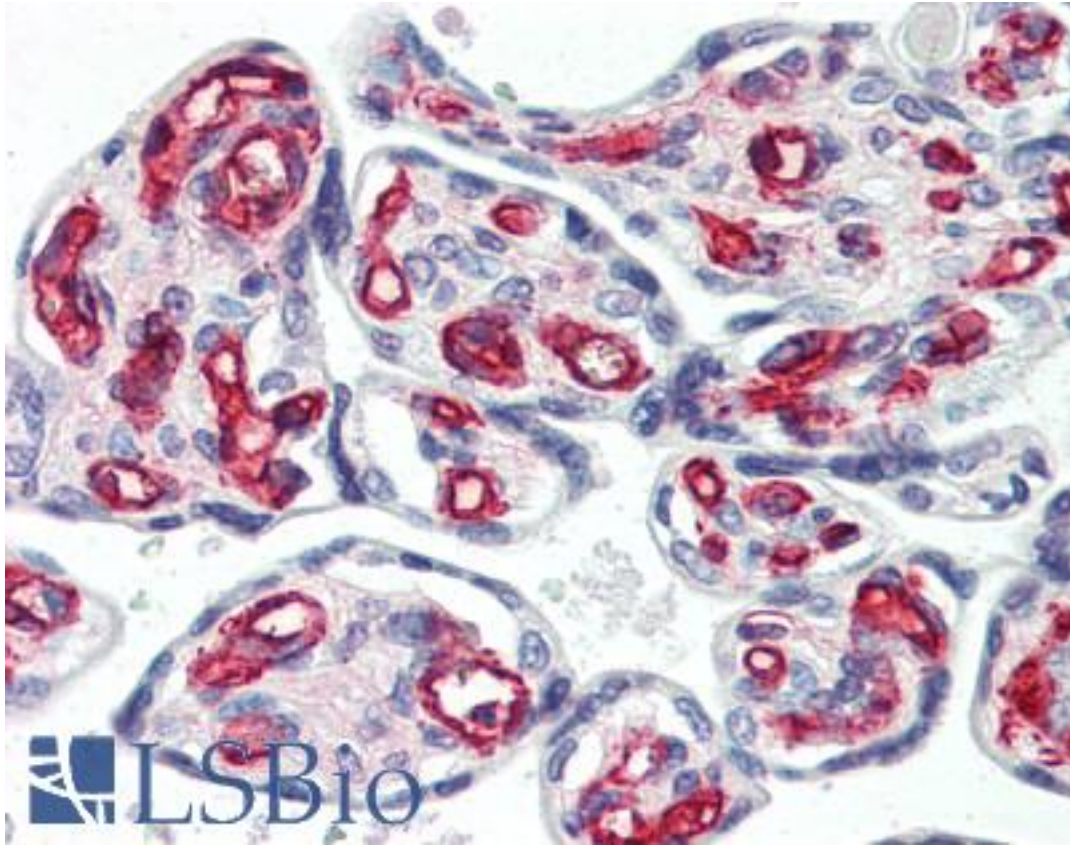


PECAM-1 / CD31 Mouse anti-Human Monoclonal Antibody - LS-B3446 - LSBio

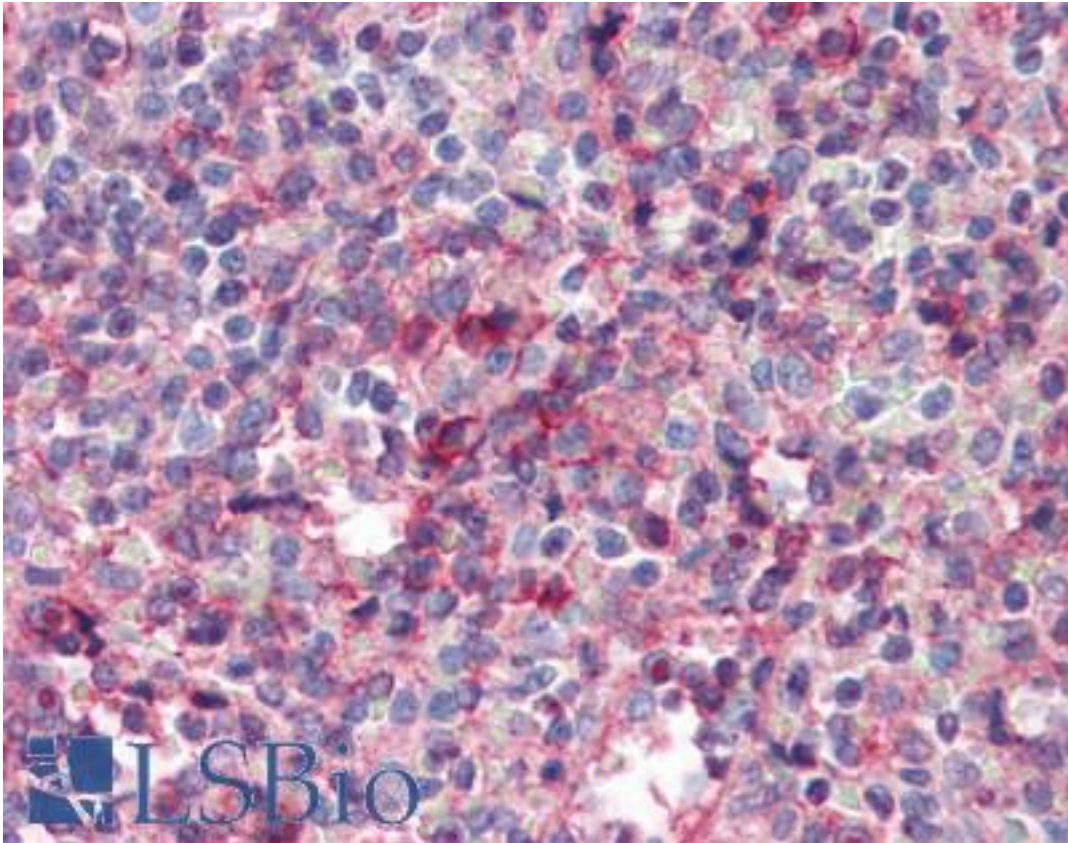
CatalogID:	LS-B3446
Validation:	This antibody replaces catalog number LS-C41483. It has been validated for use in the following assays: IHC-P.
Target:	platelet/endothelial cell adhesion molecule 1 (PECAM1)
Synonyms:	PECAM1 Antibody, CD31 Antibody, CD31 antigen Antibody, EndoCAM Antibody, PECA1 Antibody, PECAM-1 Antibody, GPIIA Antibody
Host	PECAM1 antibody was produced in Mouse
Clonality:	Monoclonal
Isotype:	IgG1
Immunogen Species:	PECAM-1 / CD31 antibody was raised against Human
Immunogen:	PECAM-1 / CD31 antibody was raised against recombinant human PECAM1 / CD31.
Specificity:	Ni-NTA purified recombinant CD31 expressed in E. Coli strain BL21 (DE3)
Reactivity:	Human
Purification:	Ascites
Presentation:	Ascitic fluid, 0.03% sodium azide.
Recommended Storage:	Store at -20°C. Aliquot to avoid freeze/thaw cycles.
Usage Summary:	Immunohistochemistry: LS-B3446 was validated for use in immunohistochemistry on a panel of 21 formalin-fixed, paraffin-embedded (FFPE) human tissues after heat induced antigen retrieval in pH 6.0 citrate buffer. After incubation with the primary antibody, slides were incubated with biotinylated secondary antibody, followed by alkaline phosphatase-streptavidin and chromogen. The stained slides were evaluated by a pathologist to confirm staining specificity. The optimal working concentration for LS-B3446 was determined to be 1:200.
Uses:	IHC - Paraffin (1:200), Western blot (1:500 - 1:2000), ELISA (1:10000) (Optimal dilution to be determined by the researcher)
Size:	50 µl

Immunohistochemistry Image:



Anti-CD31 antibody IHC of human placenta. Immunohistochemistry of formalin-fixed, paraffin-embedded tissue after heat-induced antigen retrieval. Antibody LS-B3446 dilution 1:200.

Immunohistochemistry Image:



Anti-CD31 antibody IHC of human spleen. Immunohistochemistry of formalin-fixed, paraffin-embedded tissue after heat-induced antigen retrieval. Antibody LS-B3446 dilution 1:200.

Western Blot Image:

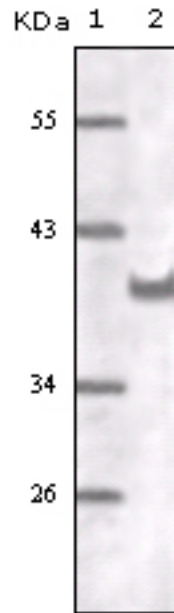


Figure 1: Western blot analysis using anti- human CD31 monoclonal antibody against CD31 recombinant protein.

Requested From:

Japan

Laboratory Reagent For In Vitro Research Use Only

Not for resale without prior written consent from LifeSpan BioSciences, Inc.

Created on 9/23/2014

© 2014 LifeSpan BioSciences