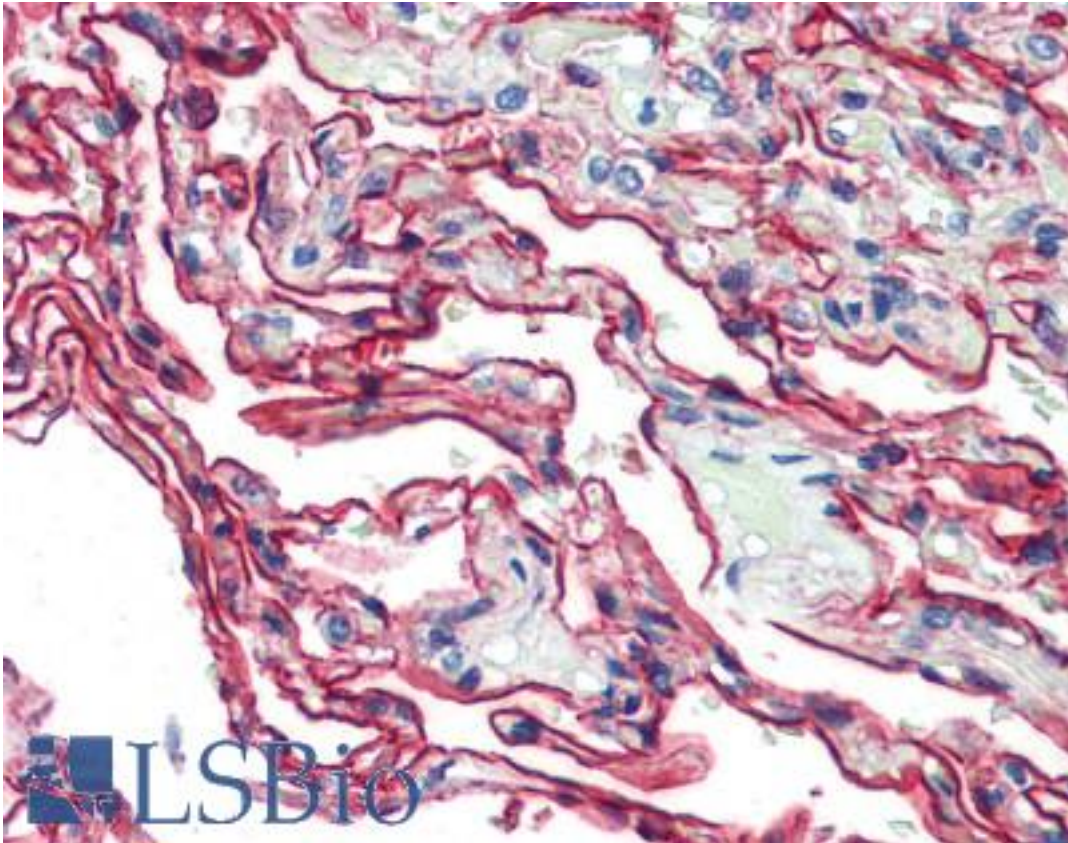


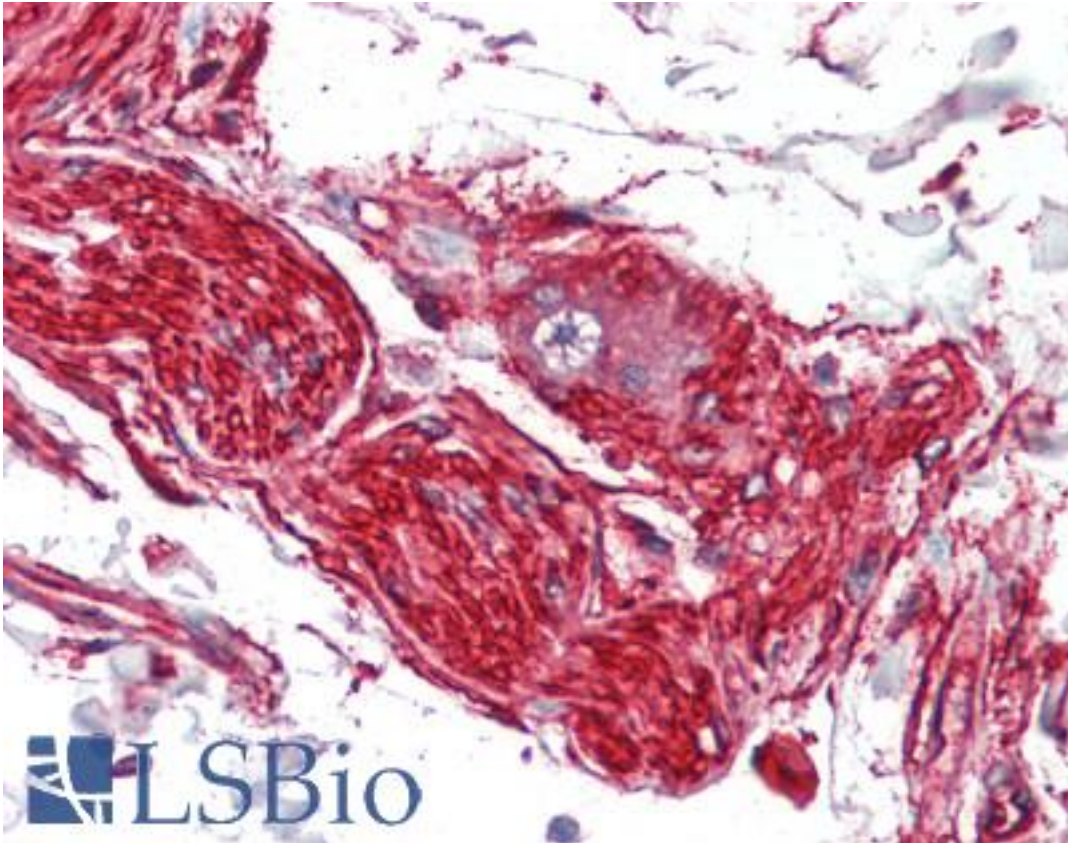
S100A10 Mouse anti-Human Monoclonal Antibody - LS-B3445 - LSBio	
CatalogID:	LS-B3445
Validation:	This antibody replaces catalog number LS-C41471. It has been validated for use in the following assays: IHC-P.
Target:	S100 calcium binding protein A10 (S100A10)
Synonyms:	S100A10 Antibody, 42C Antibody, ANX2LG Antibody, Calpactin-1 light chain Antibody, Calpactin I light chain Antibody, CLP11 Antibody, p11 Antibody, p10 Antibody, p10 protein Antibody, Protein S100-A10 Antibody, ANX2L Antibody, Ca[1] Antibody, CAL1L Antibody, Cellular ligand of annexin II Antibody, gp11 Antibody
Host	S100A10 antibody was produced in Mouse
Clonality:	Monoclonal
Isotype:	IgG1
Immunogen Species:	S100A10 antibody was raised against Human
Antigen Type:	Recombinant protein
Immunogen:	S100A10 antibody was raised against recombinant Human S100A10.
Specificity:	Ni-NTA purified truncated recombinant P11 expressed in E. Coli strain BL21 (DE3)
Reactivity:	Human
Purification:	Protein A purified
Presentation:	PBS, pH 7.4, 0.03% sodium azide.
Usage Summary:	Immunohistochemistry: LS-B3445 was validated for use in immunohistochemistry on a panel of 21 formalin-fixed, paraffin-embedded (FFPE) human tissues after heat induced antigen retrieval in pH 6.0 citrate buffer. After incubation with the primary antibody, slides were incubated with biotinylated secondary antibody, followed by alkaline phosphatase-streptavidin and chromogen. The stained slides were evaluated by a pathologist to confirm staining specificity. The optimal working concentration for LS-B3445 was determined to be 1:200.
Uses:	IHC - Paraffin (1:200), Immunofluorescence (1:100 - 1:500), Western blot, ELISA (1:10000) (Optimal dilution to be determined by the researcher)
Size:	50 µl

Immunohistochemistry Image:



Anti-S100A10 antibody IHC of human lung. Immunohistochemistry of formalin-fixed, paraffin-embedded tissue after heat-induced antigen retrieval. Antibody LS-B3445 dilution 1:200.

Immunohistochemistry Image:



Anti-S100A10 antibody IHC of human nerve and ganglion cell. Immunohistochemistry of formalin-fixed, paraffin-embedded tissue after heat-induced antigen retrieval. Antibody LS-B3445 dilution 1:200.

Western Blot Image:

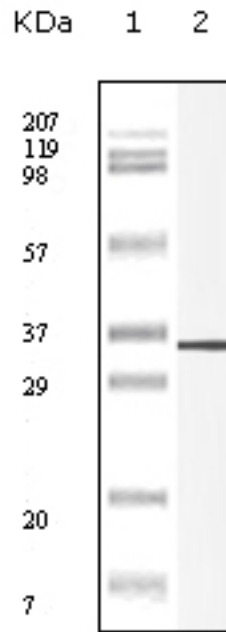


Figure 1: Western blot analysis using P11 antibody against truncated P11 recombinant protein.

Requested From:

Japan

Laboratory Reagent For In Vitro Research Use Only

Not for resale without prior written consent from LifeSpan BioSciences, Inc.

Created on 9/23/2014

© 2014 LifeSpan BioSciences