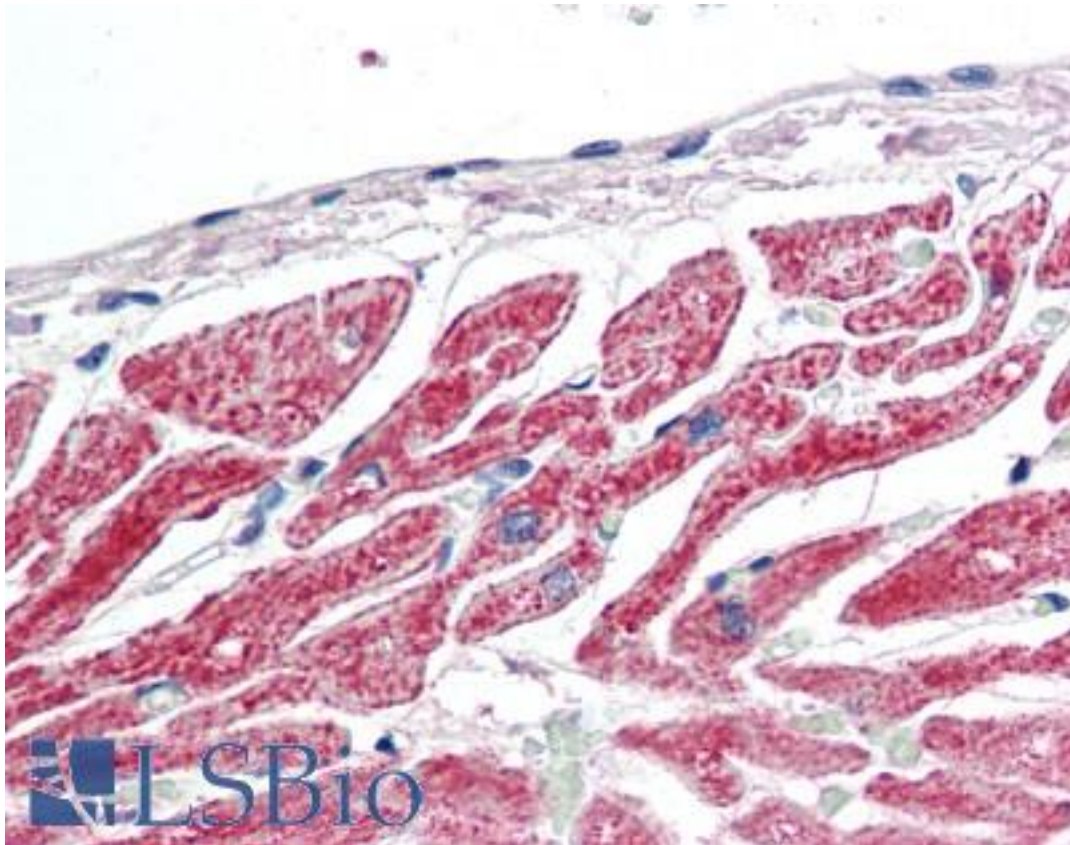


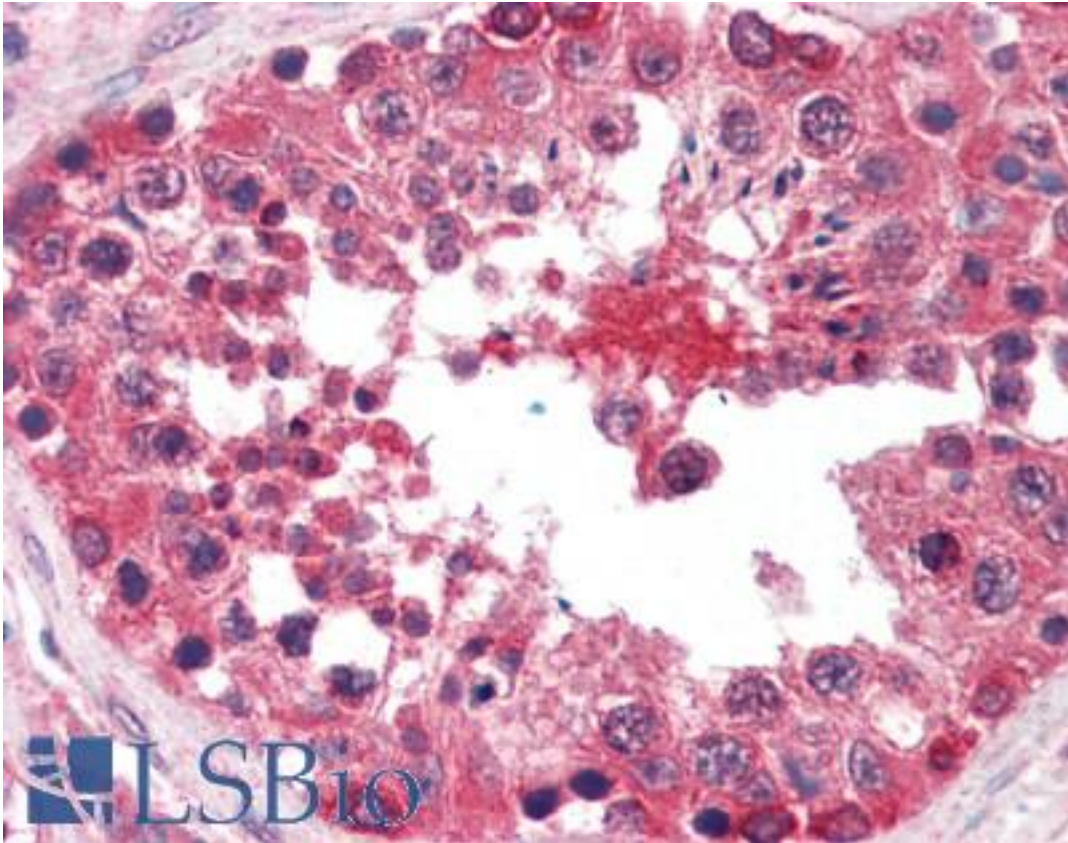
BRAF / B-Raf Mouse anti-Human Monoclonal Antibody - LS-B3444 - LSBio	
CatalogID:	LS-B3444
Validation:	This antibody replaces catalog number LS-C41460. It has been validated for use in the following assays: IHC-P.
Target:	v-raf murine sarcoma viral oncogene homolog B (BRAF)
Synonyms:	BRAF Antibody, 94 kDa B-raf protein Antibody, B-raf Antibody, BRAF1 Antibody, B Raf Antibody, Proto-oncogene B-Raf Antibody, p94 Antibody, B-RAF1 Antibody, NS7 Antibody, ONCOGENE BRAF Antibody, RAFB1 Antibody
Family / Subfamily:	Protein Kinase / Raf
Host	BRAF antibody was produced in Mouse
Clonality:	Monoclonal
Immunogen Species:	BRAF / B-Raf antibody was raised against Human
Immunogen:	BRAF / B-Raf antibody was raised against recombinant human BRAF.
Specificity:	Ni-NTA purified truncated recombinant BRAF expressed in E. coli strain BL21 (DE3).
Reactivity:	Human
Purification:	Ascites
Recommended Storage:	Long term: -20°C; Short term: -20°C
Usage Summary:	Immunohistochemistry: LS-B3444 was validated for use in immunohistochemistry on a panel of 21 formalin-fixed, paraffin-embedded (FFPE) human tissues after heat induced antigen retrieval in pH 6.0 citrate buffer. After incubation with the primary antibody, slides were incubated with biotinylated secondary antibody, followed by alkaline phosphatase-streptavidin and chromogen. The stained slides were evaluated by a pathologist to confirm staining specificity. The optimal working concentration for LS-B3444 was determined to be 1:200.
Uses:	IHC - Paraffin (1:200), Western blot (1:500 - 1:1000), ELISA (1:10000) (Optimal dilution to be determined by the researcher)
Size:	50 µl

Immunohistochemistry Image:



Anti-BRAF antibody IHC of human heart. Immunohistochemistry of formalin-fixed, paraffin-embedded tissue after heat-induced antigen retrieval. Antibody LS-B3444 dilution 1:200.

Immunohistochemistry Image:



Anti-BRAF antibody IHC of human testis. Immunohistochemistry of formalin-fixed, paraffin-embedded tissue after heat-induced antigen retrieval. Antibody LS-B3444 dilution 1:200.

Western Blot Image:

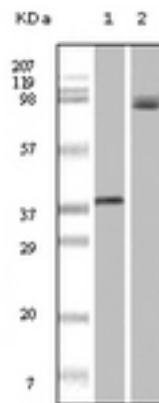


Figure 1: Western blot analysis using Braf monoclonal antibody against truncated recombinant Braf (lane 1) and A431 cell lysate (lane 2) .

Requested From:

Japan

Laboratory Reagent For In Vitro Research Use Only

Not for resale without prior written consent from LifeSpan BioSciences, Inc.

Created on 9/23/2014

© 2014 LifeSpan BioSciences