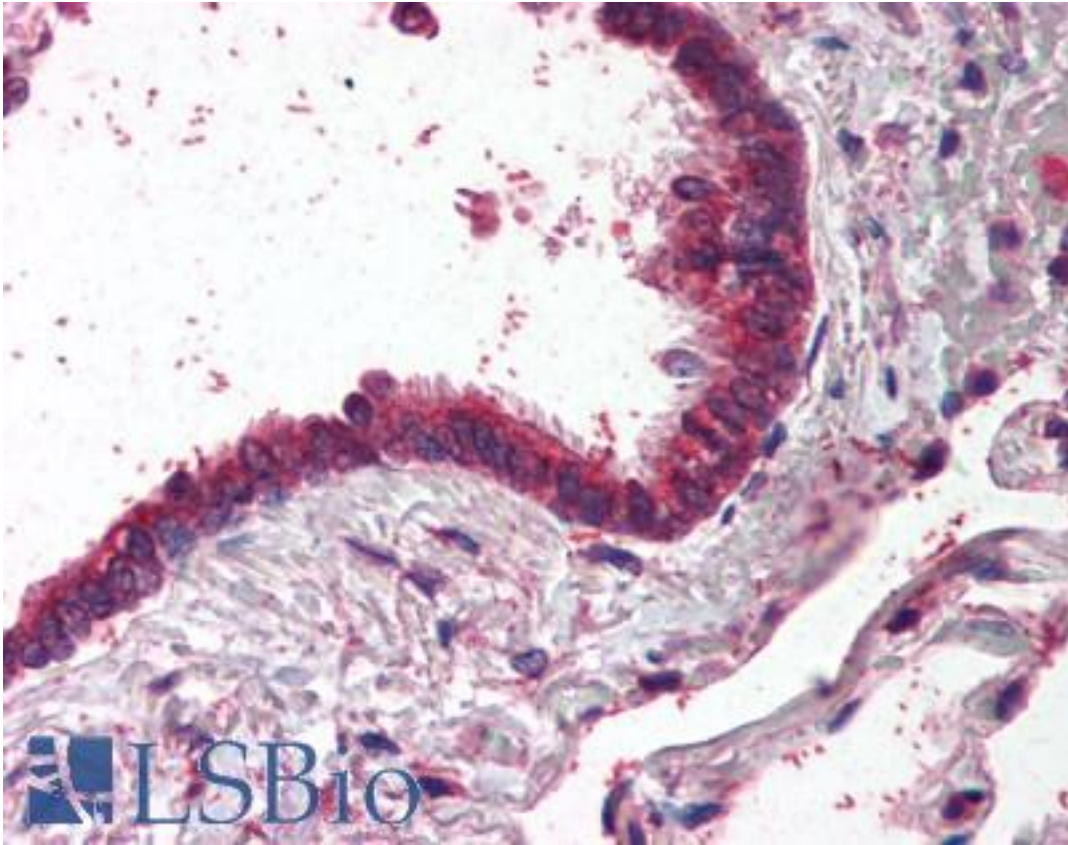


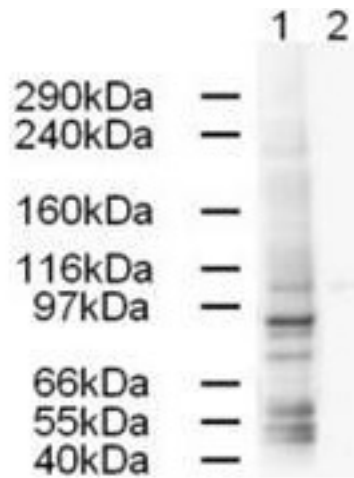
AP1G1 / Gamma Adaptin Goat anti-Human Polyclonal (aa646-659) Antibody - LS-B344 - LSBio	
CatalogID:	LS-B344
Validation:	This antibody replaces catalog number LS-C18981. It has been validated for use in the following assays: IHC.
Target:	adaptor-related protein complex 1, gamma 1 subunit (AP1G1)
Synonyms:	AP1G1 Antibody, ADTG Antibody, AP-1 complex subunit gamma-1 Antibody, CLAPG1 Antibody, Gamma adaptin Antibody, Gamma1-adaptin Antibody
Host	AP1G1 antibody was produced in Goat
Clonality:	Polyclonal
Immunogen Species:	AP1G1 / Gamma Adaptin antibody was raised against Human
Antigen Type:	Synthetic peptide
Immunogen:	AP1G1 / Gamma Adaptin antibody was raised against synthetic peptide from human AP1G1 / Gamma Adaptin.
Specificity:	aa 646-659 of Human AP1G1.
Epitope:	aa646-659
Reactivity:	Human
Purification:	Immunoaffinity purified
Presentation:	0.02 M potassium phosphate, 0.15 M sodium chloride, pH 7.2, 0.01% sodium azide.
Recommended Storage:	+4°C or -20°C, Avoid repeated freezing and thawing.
Usage Summary:	Immunohistochemistry: LS-B344 was validated for use in immunohistochemistry on a panel of 21 formalin-fixed, paraffin-embedded (FFPE) human tissues after heat induced antigen retrieval in pH 6.0 citrate buffer. After incubation with the primary antibody, slides were incubated with biotinylated secondary antibody, followed by alkaline phosphatase-streptavidin and chromogen. The stained slides were evaluated by a pathologist to confirm staining specificity. The optimal working concentration for LS-B344 was determined to be 2.5 ug/ml.
Uses:	IHC - Paraffin (2.5 ug/ml), Immunofluorescence, Western blot (1:500 - 1:2000), ELISA (1:2000 - 1:8000) (Optimal dilution to be determined by the researcher)
Size:	50 ug
Concentration:	0.7 mg/ml

Immunohistochemistry Image:



Anti-AP1G1 / Gamma Adaptin antibody IHC of human lung, respiratory epithelium.
Immunohistochemistry of formalin-fixed, paraffin-embedded tissue after heat-induced antigen retrieval. Antibody LS-B344 concentration 5 ug/ml.

Western Blot Image:



Anti-AP1G1 Antibody - Western Blot. Western blot of Affinity Purified anti-AP1G1 antibody shows strong detection of a 91-kD band corresponding to Human AP1G1 in a HeLa whole cell lysate (lane 1). Peptide competition (using 1 ug/ml of the immunizing peptide) blocks the specific reactivity of this antibody with AP1G1 (lane 2). Approximately 20 ug of each lysate was run on a SDS-PAGE and transferred onto nitrocellulose followed by reaction with a 1:500 dilution of anti-AP1G1 antibody. Detection occurred using a 1:5000 dilution of HRP-labeled Rabbit anti-Goat IgG for 1 hour at room temperature. A chemi-luminescence system was used for signal detection (Roche) using a 60-sec exposure time.

Requested From:

Japan

Laboratory Reagent For In Vitro Research Use Only

Not for resale without prior written consent from LifeSpan BioSciences, Inc.

Created on 9/23/2014

© 2014 LifeSpan BioSciences