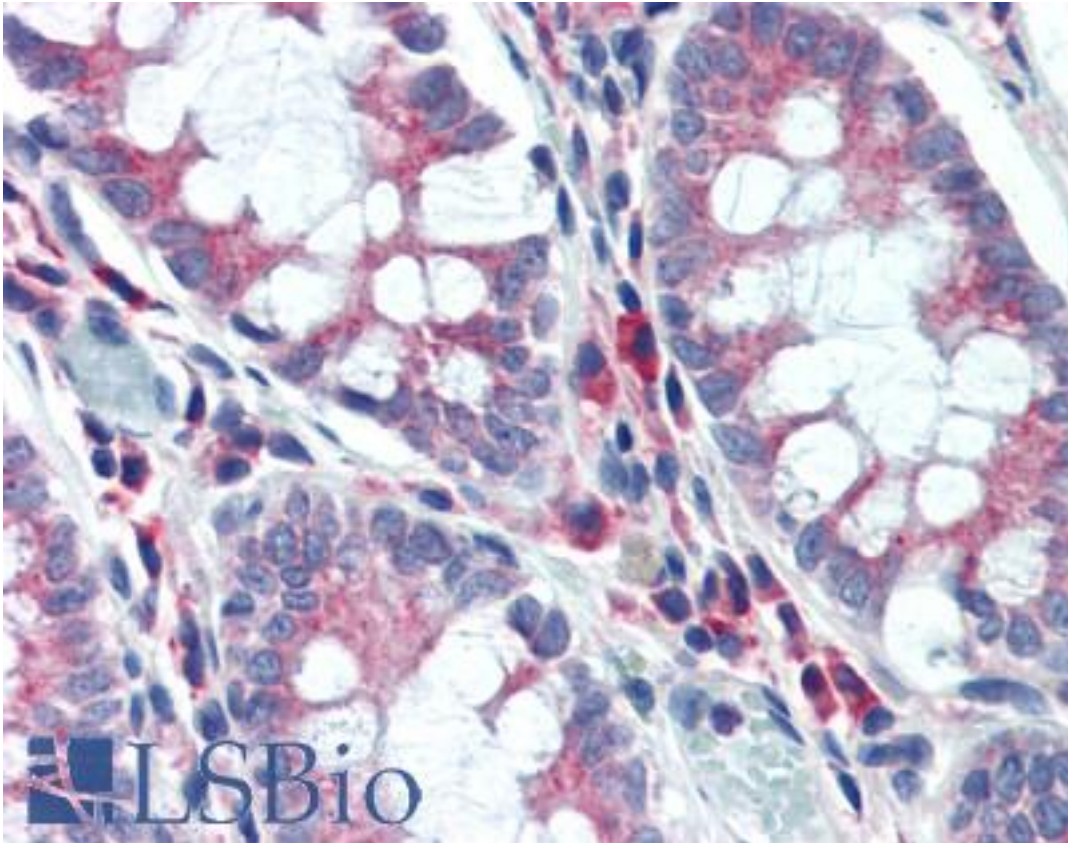


**NPC / NPC1 Mouse anti-Human Monoclonal Antibody - LS-B3437 - LSBio**

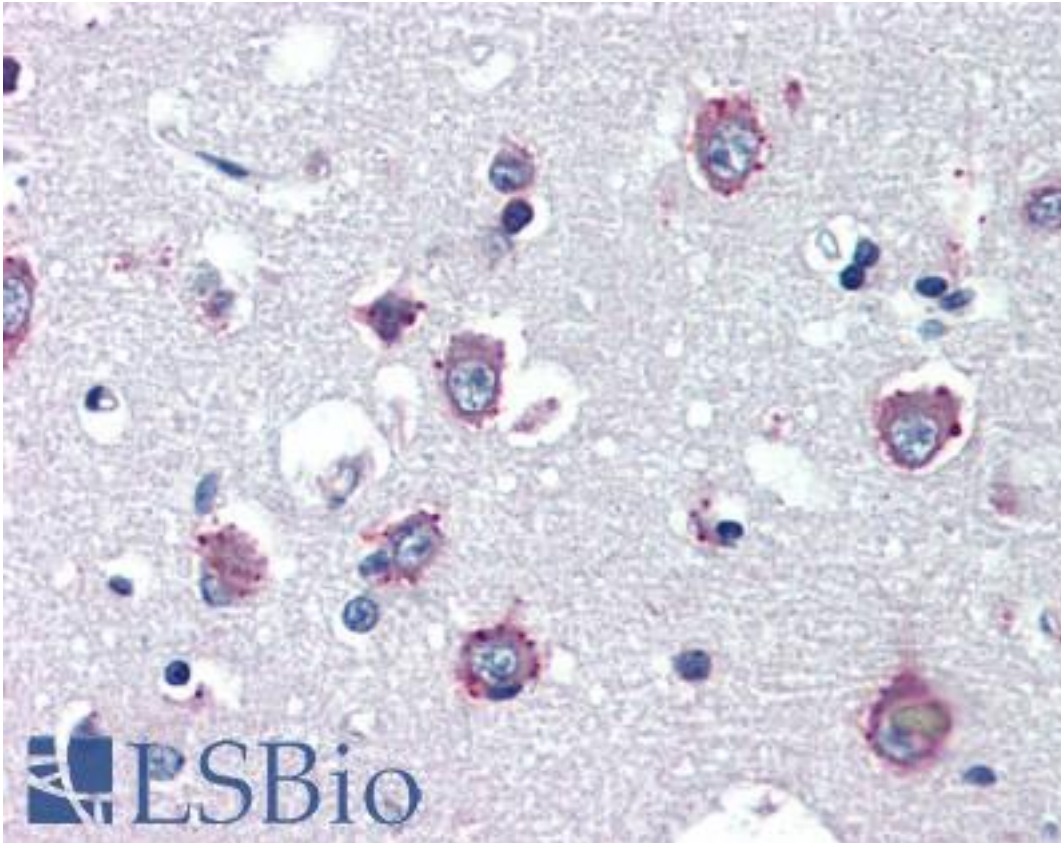
<b>CatalogID:</b>	LS-B3437
<b>Validation:</b>	This antibody replaces catalog number LS-C37791. It has been validated for use in the following assays: IHC-P.
<b>Target:</b>	Niemann-Pick disease, type C1 (NPC1)
<b>Synonyms:</b>	NPC1 Antibody, NPC Antibody, Niemann-Pick C1 protein Antibody, Niemann-Pick disease, type C1 Antibody
<b>Host</b>	NPC1 antibody was produced in Mouse
<b>Clonality:</b>	Monoclonal
<b>Isotype:</b>	IgG1
<b>Immunogen Species:</b>	NPC / NPC1 antibody was raised against Human
<b>Antigen Type:</b>	Protein
<b>Immunogen:</b>	NPC / NPC1 antibody was raised against fragments of Human NPC1 conjugated to a carrier protein.
<b>Specificity:</b>	Reacts with the human NPC1 protein. Species cross-reactivity: Confirmed with an NPC1 transfected I1061T cell line.
<b>Reactivity:</b>	Human
<b>Purification:</b>	Protein A purified
<b>Presentation:</b>	PBS, pH 7.4, 0.1% sodium azide.
<b>Recommended Storage:</b>	Long term: Add glycerol (40-50%) -20°C; Short term: +4°C
<b>Usage Summary:</b>	Immunohistochemistry: LS-B3437 was validated for use in immunohistochemistry on a panel of 21 formalin-fixed, paraffin-embedded (FFPE) human tissues after heat induced antigen retrieval in pH 6.0 citrate buffer. After incubation with the primary antibody, slides were incubated with biotinylated secondary antibody, followed by alkaline phosphatase-streptavidin and chromogen. The stained slides were evaluated by a pathologist to confirm staining specificity. The optimal working concentration for LS-B3437 was determined to be 10 ug/ml.
<b>Uses:</b>	IHC - Paraffin (10 µg/ml), Immunofluorescence (10 µg/ml), Western blot (1 - 2 µg/ml), Immunoprecipitation (Optimal dilution to be determined by the researcher)
<b>Size:</b>	50 µg
<b>Concentration:</b>	0.5 mg/ml

**Immunohistochemistry Image:**



Anti-NPC1 antibody IHC of human colon. Immunohistochemistry of formalin-fixed, paraffin-embedded tissue after heat-induced antigen retrieval. Antibody LS-B3437 concentration 10 ug/ml.

**Immunohistochemistry Image:**



Anti-NPC1 antibody IHC of human brain, cortex. Immunohistochemistry of formalin-fixed, paraffin-embedded tissue after heat-induced antigen retrieval. Antibody LS-B3437 concentration 10 ug/ml.

**Requested From:**

Japan

Laboratory Reagent For In Vitro Research Use Only

Not for resale without prior written consent from LifeSpan BioSciences, Inc.

Created on 9/23/2014

© 2014 LifeSpan BioSciences