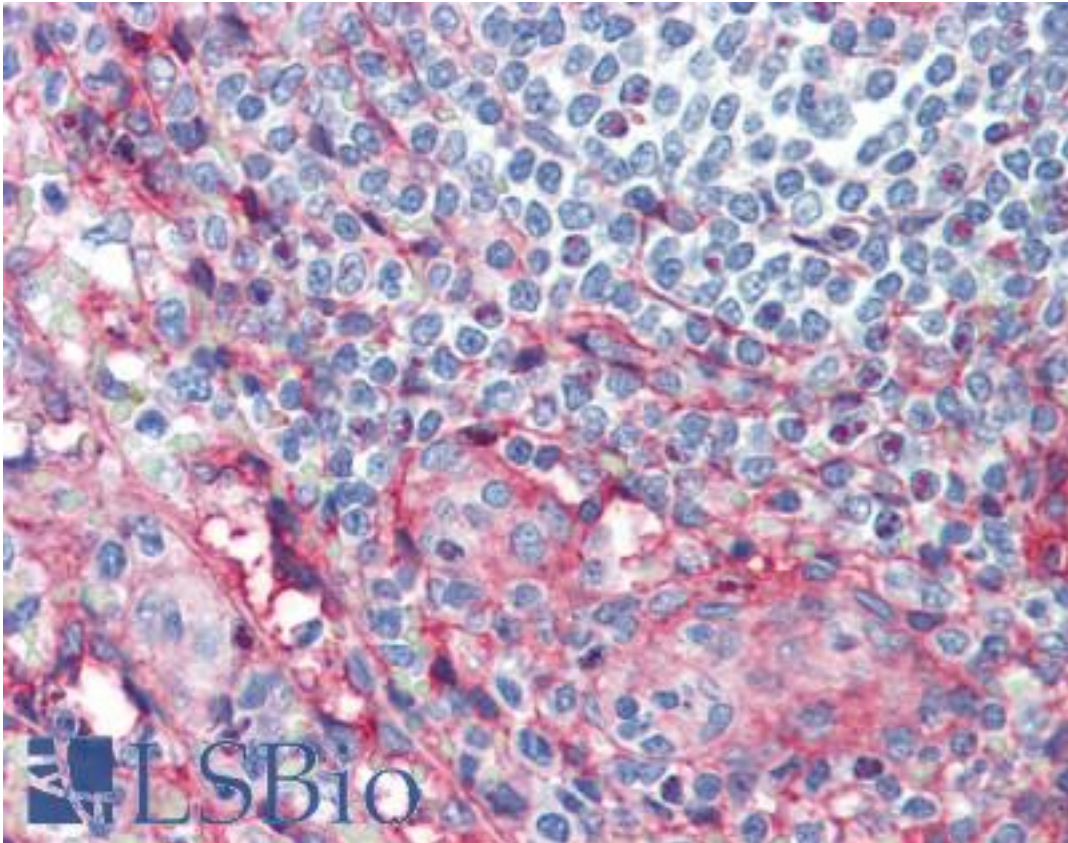


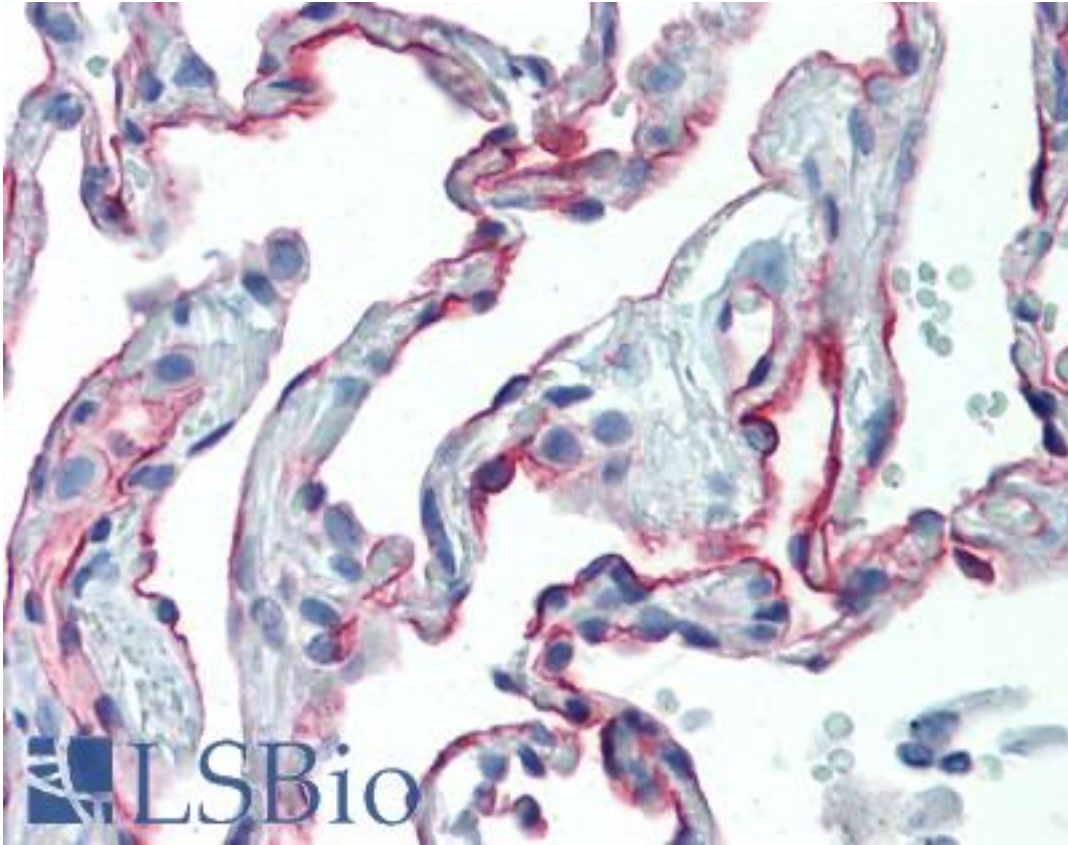
ICAM1 / CD54 Mouse anti-Human Monoclonal (15.2) Antibody - LS-B3431 - LSBio	
<b>CatalogID:</b>	LS-B3431
<b>Validation:</b>	This antibody replaces catalog number LS-C11550. It has been validated for use in the following assays: IHC-P.
<b>Target:</b>	intercellular adhesion molecule 1 (ICAM1)
<b>Synonyms:</b>	ICAM1 Antibody, BB2 Antibody, CD54 antigen Antibody, CD54 Antibody, ICAM-1 Antibody, p3.58 Antibody
<b>Family / Subfamily:</b>	ICAM / not assigned-ICAM
<b>Host</b>	ICAM1 antibody was produced in Mouse
<b>Clonality:</b>	Monoclonal
<b>Isotype:</b>	IgG1
<b>Clone Name:</b>	15.2
<b>Immunogen Species:</b>	ICAM1 / CD54 antibody was raised against Human
<b>Antigen Type:</b>	Cells
<b>Immunogen:</b>	ICAM1 / CD54 antibody was raised against human monocytes.
<b>Specificity:</b>	Recognizes the human CD54 cell surface antigen, a 90kD glycoprotein also known as ICAM-1. CD54 is expressed by many cells following activation by inflammatory mediators. Clone 15.2 is reported to block CD54 function.
<b>Reactivity:</b>	Human, Pig
<b>Purification:</b>	Protein G purified
<b>Presentation:</b>	PBS, 0.09% sodium azide.
<b>Recommended Storage:</b>	+4°C or -20°C, Avoid repeated freezing and thawing.
<b>Usage Summary:</b>	Immunohistochemistry: LS-B3431 was validated for use in immunohistochemistry on a panel of 21 formalin-fixed, paraffin-embedded (FFPE) human tissues after heat induced antigen retrieval in pH 6.0 citrate buffer. After incubation with the primary antibody, slides were incubated with biotinylated secondary antibody, followed by alkaline phosphatase-streptavidin and chromogen. The stained slides were evaluated by a pathologist to confirm staining specificity. The optimal working concentration for LS-B3431 was determined to be 10 ug/ml. Flow Cytometry: Use 10 ul of the suggested working dilution to label 10 <sup>6</sup> cells in 100ul.
<b>Uses:</b>	IHC - Paraffin (10 µg/ml), IHC - Frozen, Immunoprecipitation, Flow Cytometry (1:50 - 1:100) (Optimal dilution to be determined by the researcher)
<b>Size:</b>	50 µg
<b>Concentration:</b>	1 mg/ml

**Immunohistochemistry Image:**



Anti-ICAM-1 antibody IHC of human spleen. Immunohistochemistry of formalin-fixed, paraffin-embedded tissue after heat-induced antigen retrieval. Antibody LS-B3431 concentration 10 ug/ml.

**Immunohistochemistry Image:**



Anti-ICAM-1 antibody IHC of human lung. Immunohistochemistry of formalin-fixed, paraffin-embedded tissue after heat-induced antigen retrieval. Antibody LS-B3431 concentration 10 ug/ml.

**Requested From:**

Japan

Laboratory Reagent For In Vitro Research Use Only

Not for resale without prior written consent from LifeSpan BioSciences, Inc.

Created on 9/23/2014

© 2014 LifeSpan BioSciences