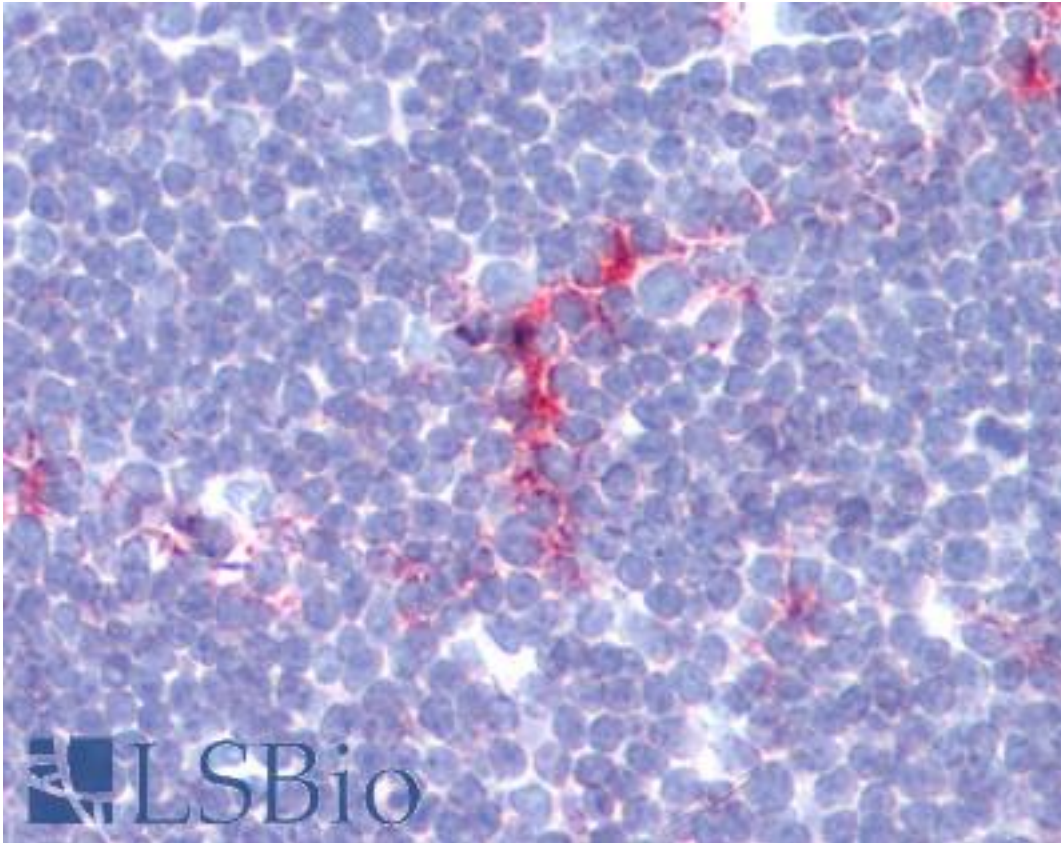


**CD1A Rabbit anti-Human Polyclonal (L21-A) Antibody - LS-B3429 - LSBio**

<b>CatalogID:</b>	LS-B3429
<b>Validation:</b>	This antibody replaces catalog number LS-C103471. It has been validated for use in the following assays: IHC-P.
<b>Target:</b>	CD1a molecule
<b>Synonyms:</b>	CD1A Antibody, CD1 Antibody, CD1A antigen, a polypeptide Antibody, CD1a molecule Antibody, FCB6 Antibody, HTA1 Antibody, HTa1 thymocyte antigen Antibody, R4 Antibody, T6 Antibody, CD1a antigen Antibody, Cluster of differentiation 1 A Antibody
<b>Host</b>	CD1A antibody was produced in Rabbit
<b>Clonality:</b>	Polyclonal
<b>Clone Name:</b>	L21-A
<b>Immunogen Species:</b>	CD1A antibody was raised against Human
<b>Immunogen:</b>	CD1A antibody was raised against peptide derived from C-terminal region, near the transmembrane domain of human CD1-a
<b>Reactivity:</b>	Human
<b>Purification:</b>	Purified
<b>Presentation:</b>	20 mM Tris-HCl, pH 8.0, 20 mg/ml BSA, 0.05% sodium azide
<b>Recommended Storage:</b>	Store at -20°C.
<b>Usage Summary:</b>	Immunohistochemistry: LS-B3429 was validated for use in immunohistochemistry on a panel of 21 formalin-fixed, paraffin-embedded (FFPE) human tissues after heat induced antigen retrieval in pH 6.0 citrate buffer. After incubation with the primary antibody, slides were incubated with biotinylated secondary antibody, followed by alkaline phosphatase-streptavidin and chromogen. The stained slides were evaluated by a pathologist to confirm staining specificity. The optimal working concentration for LS-B3429 was determined to be 1:100-1:200.
<b>Uses:</b>	IHC - Paraffin (1:100 - 1:200) (Optimal dilution to be determined by the researcher)
<b>Size:</b>	250 µl

**Immunohistochemistry Image:**



Anti-CD1A antibody IHC of human thymus. Immunohistochemistry of formalin-fixed, paraffin-embedded tissue after heat-induced antigen retrieval. Antibody LS-B3429 dilution 1:100.

**Requested From:**

Japan

Laboratory Reagent For In Vitro Research Use Only

Not for resale without prior written consent from LifeSpan BioSciences, Inc.

Created on 9/23/2014

© 2014 LifeSpan BioSciences