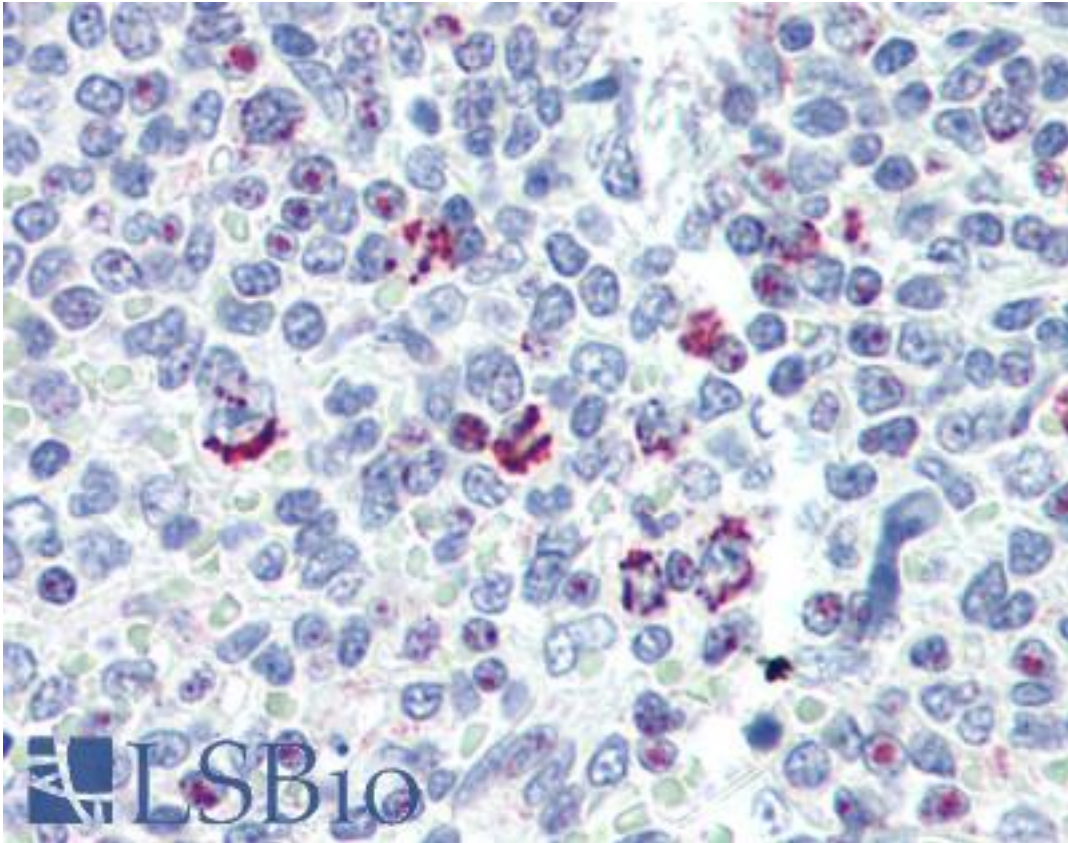


LIN28B Rabbit anti-Human Polyclonal (N-Terminus) Antibody - LS-B3423 - LSBio

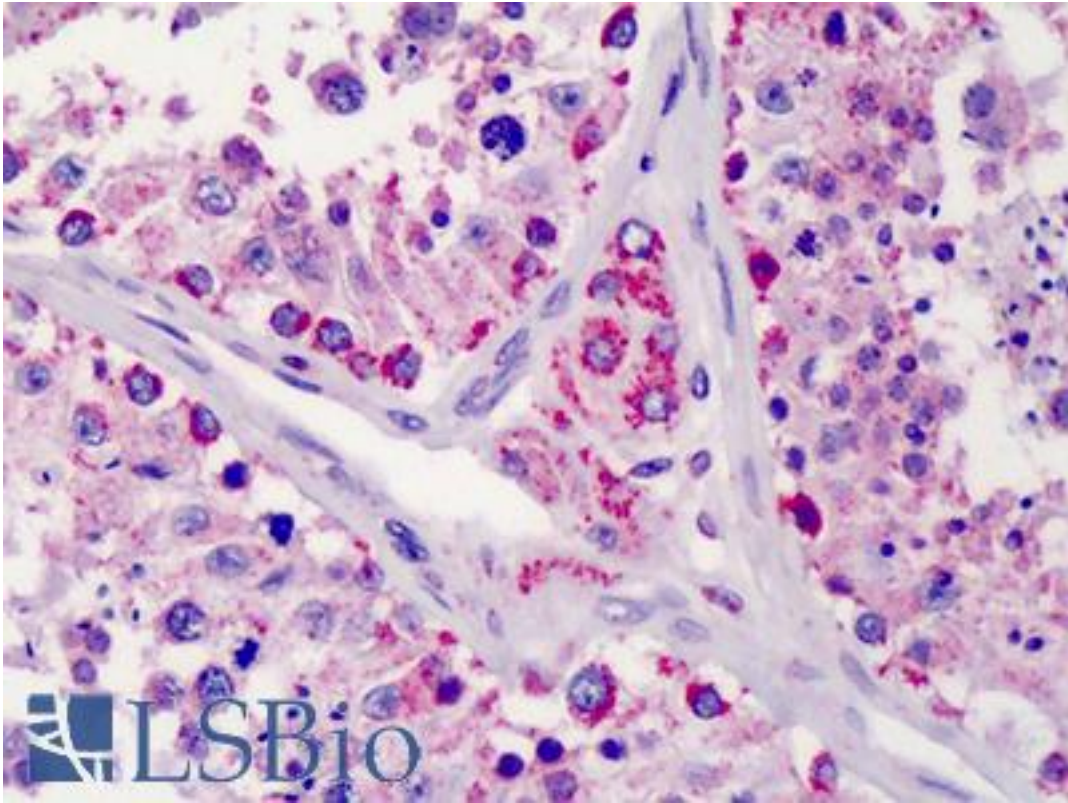
CatalogID:	LS-B3423
Validation:	This antibody replaces catalog number LS-C98240. It has been validated for use in the following assays: IHC-P.
Target:	lin-28 homolog B (C. elegans) (LIN28B)
Synonyms:	LIN28B Antibody, CSDD2 Antibody, Lin-28B Antibody, Lin-28 homolog B (C. elegans) Antibody, Protein lin-28 homolog B Antibody, Lin-28.2 Antibody
Host	LIN28B antibody was produced in Rabbit
Clonality:	Polyclonal
Immunogen Species:	LIN28B antibody was raised against Human
Antigen Type:	Synthetic peptide
Immunogen:	LIN28B antibody was raised against kLH conjugated synthetic peptide located between amino acids 6 and 36 of human LIN28B.
Specificity:	Human LIN28B
Epitope:	N-Terminus
Reactivity:	Human
Purification:	Ammonium sulfate precipitation
Presentation:	PBS, 0.09% sodium azide
Recommended Storage:	Maintain refrigerated at 2-8°C for up to 6 months. For long term storage store at -20°C.
Usage Summary:	Immunohistochemistry: LS-B3423 was validated for use in immunohistochemistry on a panel of 21 formalin-fixed, paraffin-embedded (FFPE) human tissues after heat induced antigen retrieval in pH 6.0 citrate buffer. After incubation with the primary antibody, slides were incubated with biotinylated secondary antibody, followed by alkaline phosphatase-streptavidin and chromogen. The stained slides were evaluated by a pathologist to confirm staining specificity. The optimal working concentration for LS-B3423 was determined to be 10 ug/ml.
Uses:	IHC - Paraffin (10 µg/ml), Immunofluorescence (1:100), Western blot (1:1000), Flow Cytometry (1:10 - 1:50) (Optimal dilution to be determined by the researcher)
Size:	200 µl

Immunohistochemistry Image:



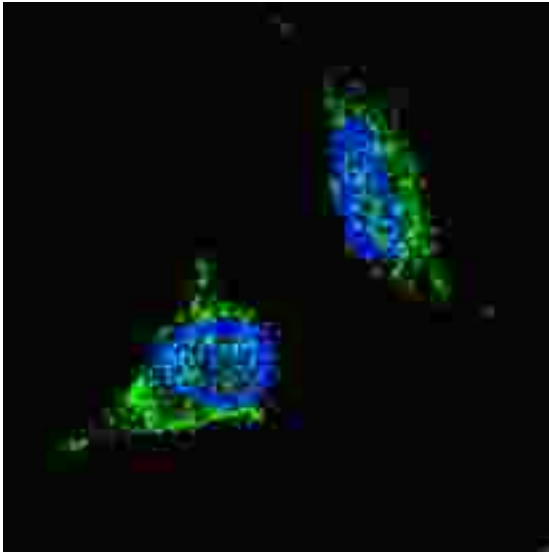
Anti-LIN28B antibody IHC of human spleen. Immunohistochemistry of formalin-fixed, paraffin-embedded tissue after heat-induced antigen retrieval. Antibody LS-B3423 concentration 10 ug/ml.

Immunohistochemistry Image:



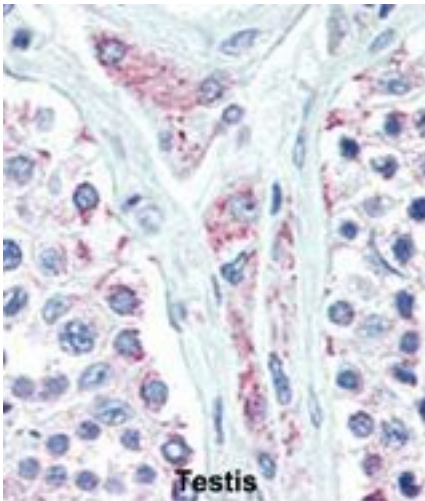
Anti-LIN28B antibody IHC of human testis. Immunohistochemistry of formalin-fixed, paraffin-embedded tissue after heat-induced antigen retrieval. Antibody LS-B3423 concentration 10 ug/ml.

Immunofluorescence Image:



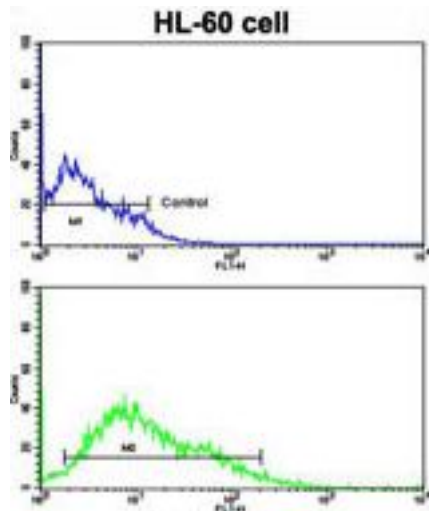
Fluorescent confocal image of SY5Y cells stained with LIN28B (N-term) antibody. SY5Y cells were fixed with 4% PFA (20 min), permeabilized with Triton X-100 (0.2%, 30 min). Cells were then incubated with LIN28B (N-term) primary antibody (1:100, 2 h at room temperature). For secondary antibody, Alexa Fluor 488 conjugated donkey anti-rabbit antibody (green) was used (1:1000, 1h). Nuclei were counterstained with Hoechst 33342 (blue) (10 ug/ml, 5 min). Note the highly specific localization of the LIN28B immunosignal to the cytoplasm, supported by Human Protein Atlas Data (<http://www.proteinatlas.org/ENSG00000187772>).

Flow Cytometry Image:



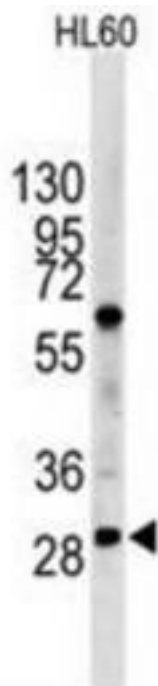
Flow cytometry of HL-60 cells using LIN28B Antibody (N-term) (bottom histogram) compared to a negative control cell (top histogram). FITC-conjugated goat-anti-rabbit secondary antibodies were used for the analysis.

Flow Cytometry Image:



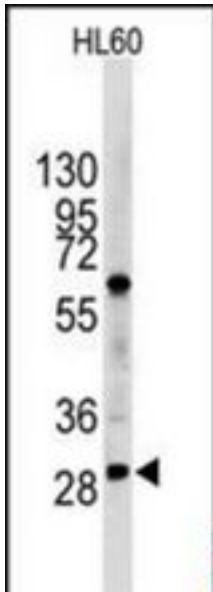
Flow cytometric analysis of HL-60 cells using LIN28B Antibody (N-term)(bottom histogram) compared to a negative control cell (top histogram). FITC-conjugated goat-anti-rabbit secondary antibodies were used for the analysis.

Western Blot Image:



Western blot of LIN28B in HL60 cell line lysates (35 ug/lane).

Western Blot Image:



Western blot analysis of LIN28B Antibody (N-term) in HL60 cell line lysates (35 ug/lane). LIN28B (arrow) was detected using the purified Pab.

Requested From:

Japan

Laboratory Reagent For In Vitro Research Use Only

Not for resale without prior written consent from LifeSpan BioSciences, Inc.

Created on 9/23/2014

© 2014 LifeSpan BioSciences