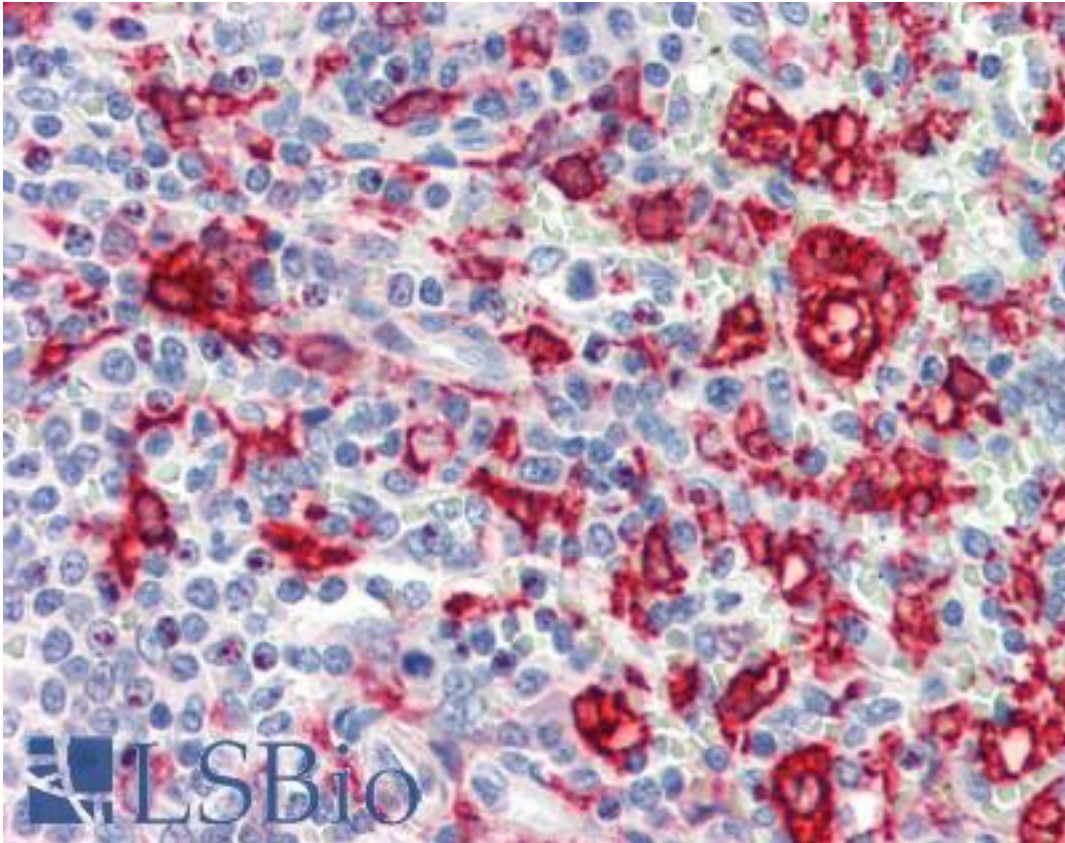


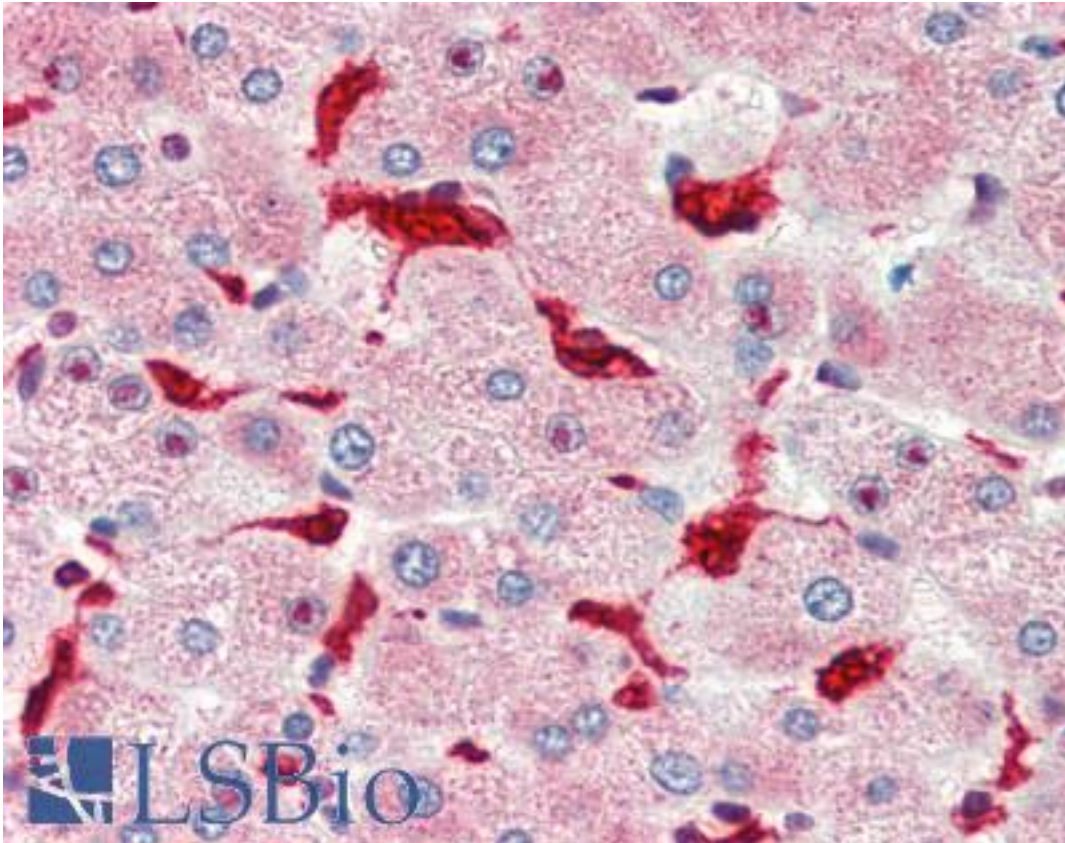
HMOX1 / HO-1 Rabbit anti-Human Polyclonal Antibody - LS-B3420 - LSBio	
<b>CatalogID:</b>	LS-B3420
<b>Validation:</b>	This antibody replaces catalog number LS-C63278. It has been validated for use in the following assays: IHC-P.
<b>Target:</b>	heme oxygenase (decycling) 1 (HMOX1)
<b>Synonyms:</b>	HMOX1 Antibody, BK286B10 Antibody, HO-1 Antibody, HSP32 Antibody, Heat shock protein, 32-kD Antibody, Heme oxygenase (decycling) 1 Antibody, Heme oxygenase 1 Antibody, HO1 Antibody
<b>Host</b>	HMOX1 antibody was produced in Rabbit
<b>Clonality:</b>	Polyclonal
<b>Immunogen Species:</b>	HMOX1 / HO-1 antibody was raised against Human
<b>Immunogen:</b>	HMOX1 / HO-1 antibody was raised against recombinant human HO-1 (Hsp32) protein.
<b>Reactivity:</b>	Human, Monkey, Mouse, Rat, Dog, Guinea pig, Hamster, Pig, Rabbit, Sheep
<b>Purification:</b>	Protein A purified
<b>Presentation:</b>	PBS, pH 7.2, 0.09% azide, 50% glycerol
<b>Recommended Storage:</b>	Store at -20°C. Aliquot to avoid freeze/thaw cycles.
<b>Usage Summary:</b>	Immunohistochemistry: LS-B3420 was validated for use in immunohistochemistry on a panel of 21 formalin-fixed, paraffin-embedded (FFPE) human tissues after heat induced antigen retrieval in pH 6.0 citrate buffer. After incubation with the primary antibody, slides were incubated with biotinylated secondary antibody, followed by alkaline phosphatase-streptavidin and chromogen. The stained slides were evaluated by a pathologist to confirm staining specificity. The optimal working concentration for LS-B3420 was determined to be 10 ug/ml.
<b>Uses:</b>	IHC - Paraffin (10 µg/ml), Western blot (1:1000) (Optimal dilution to be determined by the researcher)
<b>Size:</b>	50 µg
<b>Concentration:</b>	1 mg/ml

**Immunohistochemistry Image:**



Anti-HMOX1 / Heme Oxygenase 1 antibody IHC of human spleen. Immunohistochemistry of formalin-fixed, paraffin-embedded tissue after heat-induced antigen retrieval. Antibody LS-B3420 concentration 10 ug/ml.

**Immunohistochemistry Image:**



Anti-HMOX1 / Heme Oxygenase 1 antibody IHC of human liver. Immunohistochemistry of formalin-fixed, paraffin-embedded tissue after heat-induced antigen retrieval. Antibody LS-B3420 concentration 10 ug/ml.

**Requested From:**

Japan

Laboratory Reagent For In Vitro Research Use Only

Not for resale without prior written consent from LifeSpan BioSciences, Inc.

Created on 9/23/2014

© 2014 LifeSpan BioSciences