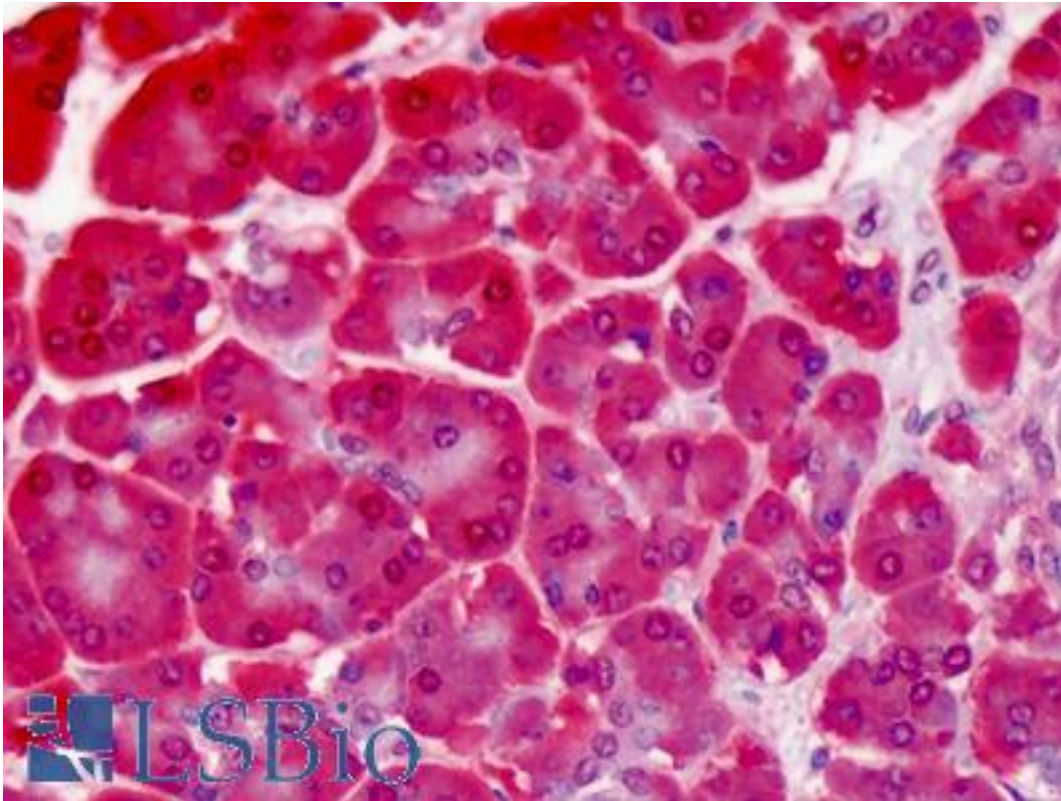


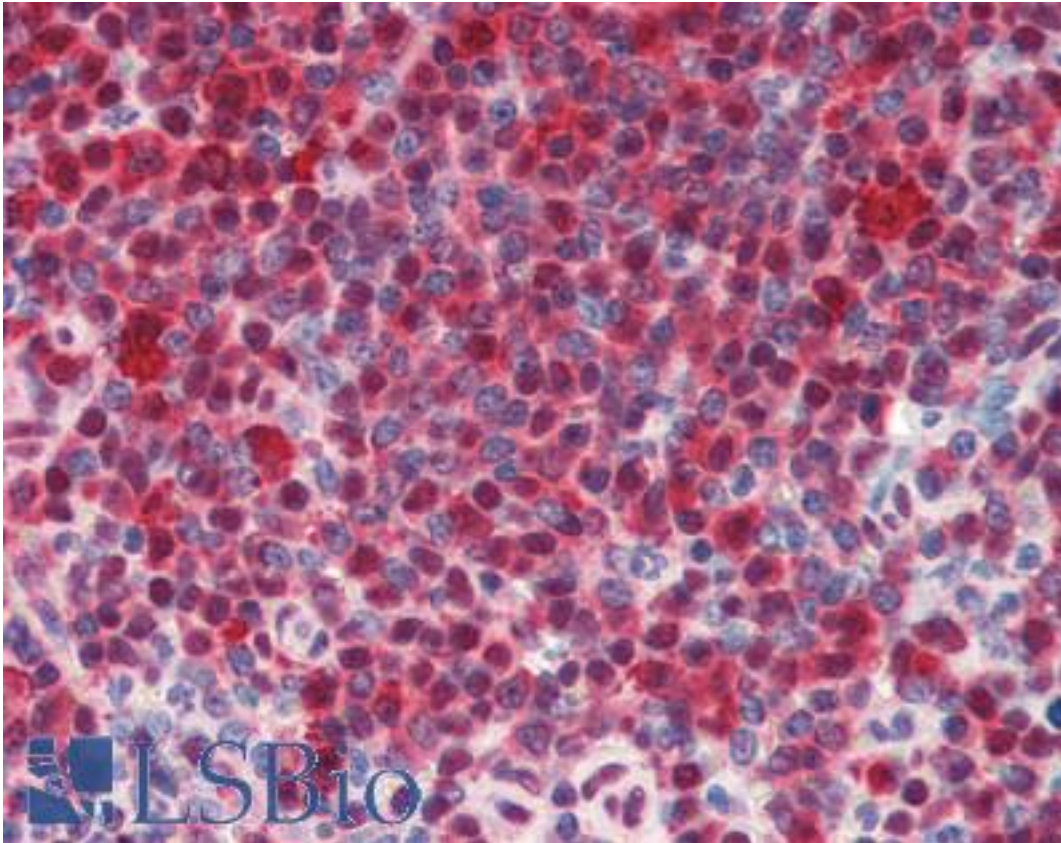
HSPA8 / HSC70 Rat anti-Hamster Monoclonal (1B5) Antibody - LS-B3415 - LSBio	
CatalogID:	LS-B3415
Validation:	This antibody replaces catalog number LS-C103504. It has been validated for use in the following assays: IHC-P.
Target:	heat shock 70kDa protein 8 (HSPA8)
Synonyms:	HSPA8 Antibody, Heat shock 70 kDa protein 8 Antibody, Heat shock 70kd protein 10 Antibody, Heat shock 70kD protein 8 Antibody, Heat shock cognate protein 54 Antibody, HSP71 Antibody, HSPA10 Antibody, HSC71 Antibody, HSP73 Antibody, LPS-associated protein 1 Antibody, Heat shock 70kDa protein 8 Antibody, NIP71 Antibody, HSC54 Antibody, HSC70 Antibody, LAP1 Antibody
Host	HSPA8 antibody was produced in Rat
Clonality:	Monoclonal
Isotype:	IgG2a
Clone Name:	1B5
Immunogen Species:	HSPA8 / HSC70 antibody was raised against Hamster
Immunogen:	HSPA8 / HSC70 antibody was raised against native hamster Hsc70 (Hsp73) protein.
Reactivity:	Hamster, Human, Monkey, Mouse, Rat, Bovine, Dog, Guinea pig, Pig, Rabbit, Sheep, Chicken
Purification:	Protein G purified
Presentation:	PBS, pH7.2, 0.09% azide in 50% glycerol
Recommended Storage:	Store at -20°C. Aliquot to avoid freeze/thaw cycles.
Usage Summary:	Immunohistochemistry: LS-B3415 was validated for use in immunohistochemistry on a panel of 21 formalin-fixed, paraffin-embedded (FFPE) human tissues after heat induced antigen retrieval in pH 6.0 citrate buffer. After incubation with the primary antibody, slides were incubated with biotinylated secondary antibody, followed by alkaline phosphatase-streptavidin and chromogen. The stained slides were evaluated by a pathologist to confirm staining specificity. The optimal working concentration for LS-B3415 was determined to be 10 ug/ml.
Uses:	IHC - Paraffin (10 µg/ml), Western blot (1:1000) (Optimal dilution to be determined by the researcher)
Size:	50 µg

Immunohistochemistry Image:



Anti-HSPA8 / HSC70 antibody IHC of human pancreas. Immunohistochemistry of formalin-fixed, paraffin-embedded tissue after heat-induced antigen retrieval. Antibody LS-B3415 concentration 10 ug/ml.

Immunohistochemistry Image:



Anti-HSPA8 / HSC70 antibody IHC of human spleen. Immunohistochemistry of formalin-fixed, paraffin-embedded tissue after heat-induced antigen retrieval. Antibody LS-B3415 concentration 10 ug/ml.

Requested From:

Japan

Laboratory Reagent For In Vitro Research Use Only

Not for resale without prior written consent from LifeSpan BioSciences, Inc.

Created on 9/23/2014

© 2014 LifeSpan BioSciences