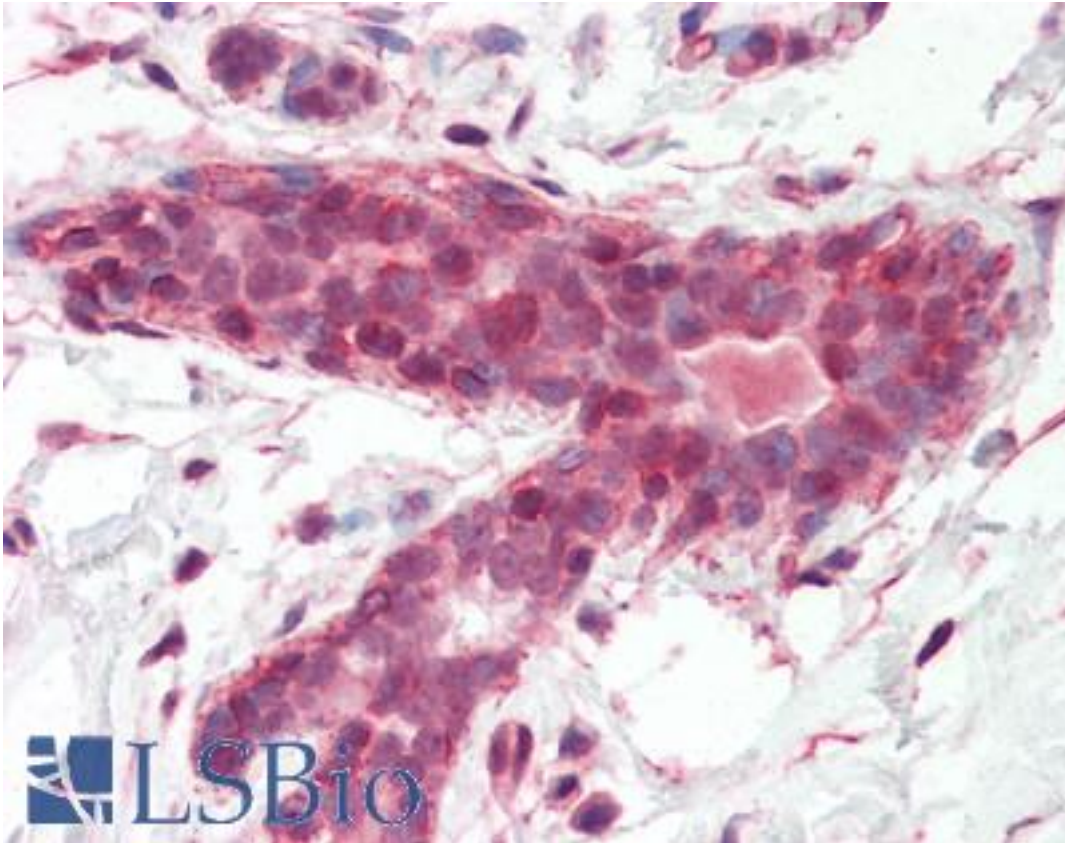


BRAP2 / IMP Rabbit anti-Human Polyclonal (N-Terminus) Antibody - LS-B3402 - LSBio	
<b>CatalogID:</b>	LS-B3402
<b>Validation:</b>	This antibody replaces catalog number LS-C3217. It has been validated for use in the following assays: IHC-P.
<b>Target:</b>	BRCA1 associated protein (BRAP)
<b>Synonyms:</b>	BRAP Antibody, BRAP2 Antibody, IMP Antibody, Galectin-2-binding protein Antibody, RING finger protein 52 Antibody, RNF52 Antibody, BRCA1 associated protein Antibody, BRCA1-associated protein Antibody
<b>Host</b>	BRAP antibody was produced in Rabbit
<b>Clonality:</b>	Polyclonal
<b>Immunogen Species:</b>	BRAP2 / IMP antibody was raised against Human
<b>Antigen Type:</b>	Synthetic peptide
<b>Immunogen:</b>	BRAP2 / IMP antibody was raised against synthetic peptide from human BRAP. Percent identity by BLAST analysis: Human, Gorilla, Gibbon, Monkey, Marmoset (100%); Mouse, Elephant, Panda, Dog, Horse (92%); Hamster, Rabbit, Pig (85%).
<b>Specificity:</b>	KLH conjugated synthetic peptide comprising amino acids 27 - 39 [AAGEMSDEEIKKT] of the human BRCA1 associated protein (BRAP) [N-terminus] protein.
<b>Epitope:</b>	N-Terminus
<b>Reactivity:</b>	Human, Gorilla, Gibbon, Monkey
<b>Predicted Reactivity:</b>	Mouse, Dog, Horse
<b>Purification:</b>	Protein G purified
<b>Presentation:</b>	PBS, 0.09% sodium azide.
<b>Recommended Storage:</b>	Long term: -20°C; Short term: +4°C. Avoid repeat freeze-thaw cycles.
<b>Usage Summary:</b>	Immunohistochemistry: LS-B3402 was validated for use in immunohistochemistry on a panel of 21 formalin-fixed, paraffin-embedded (FFPE) human tissues after heat induced antigen retrieval in pH 6.0 citrate buffer. After incubation with the primary antibody, slides were incubated with biotinylated secondary antibody, followed by alkaline phosphatase-streptavidin and chromogen. The stained slides were evaluated by a pathologist to confirm staining specificity. The optimal working concentration for LS-B3402 was determined to be 10 ug/ml.
<b>Uses:</b>	IHC - Paraffin (10 µg/ml), ELISA (1:000 - 1:1000) (Optimal dilution to be determined by the researcher)
<b>Size:</b>	50 µg
<b>Concentration:</b>	1 mg/ml

**Immunohistochemistry Image:**



Anti-BRAP antibody IHC of human breast. Immunohistochemistry of formalin-fixed, paraffin-embedded tissue after heat-induced antigen retrieval. Antibody LS-B3402 concentration 10 ug/ml.

**Requested From:**

Japan

Laboratory Reagent For In Vitro Research Use Only

Not for resale without prior written consent from LifeSpan BioSciences, Inc.

Created on 9/23/2014

© 2014 LifeSpan BioSciences