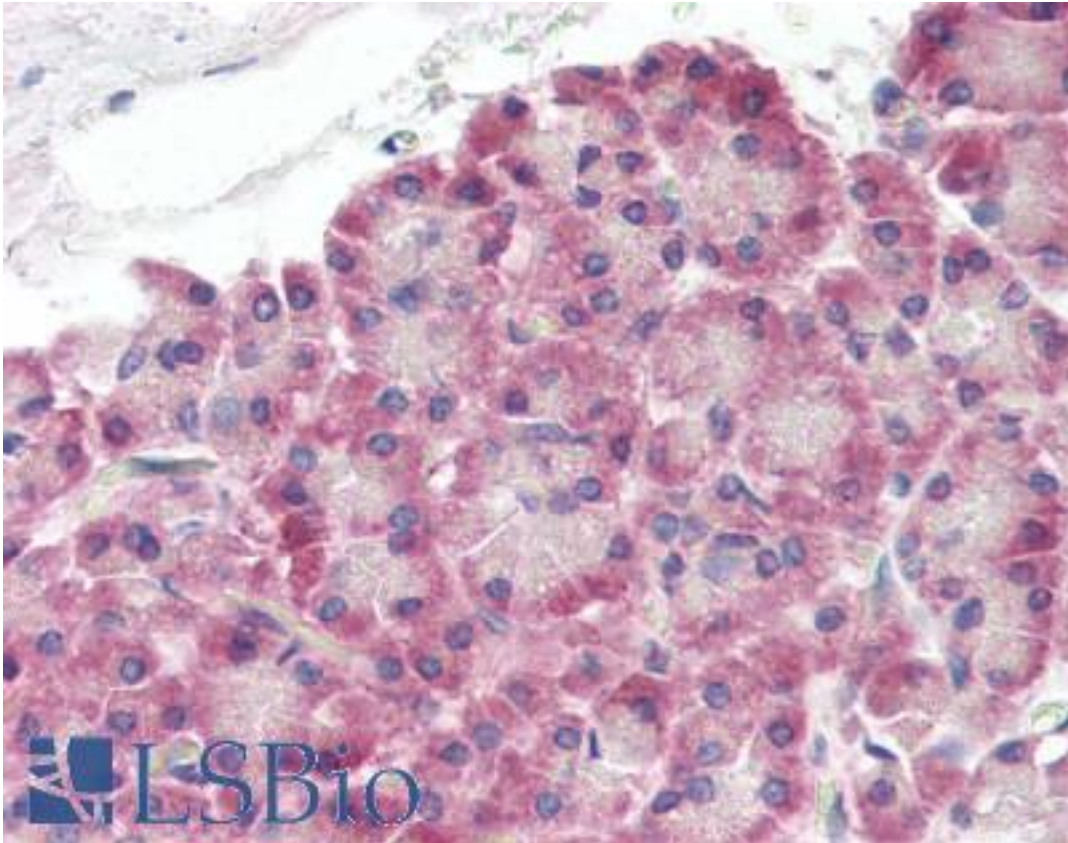


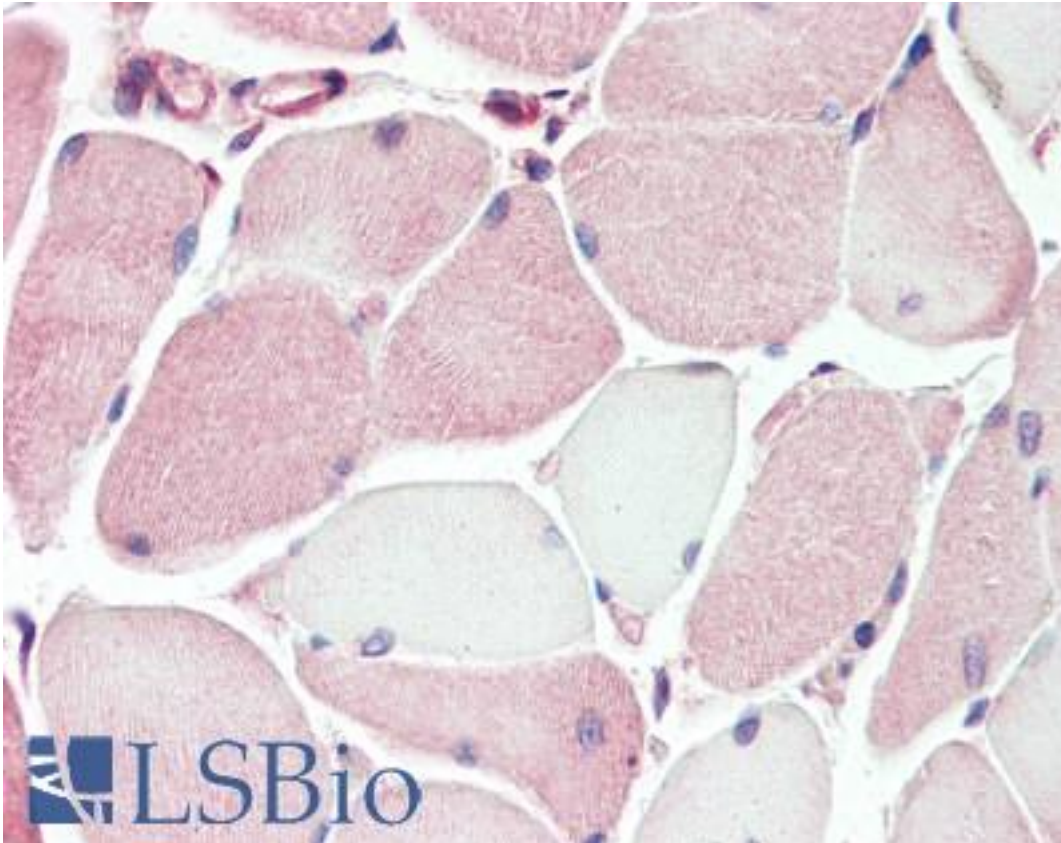
KX / XK Rabbit anti-Human Polyclonal (aa22-38) Antibody - LS-B3401 - LSBio	
CatalogID:	LS-B3401
Validation:	This antibody replaces catalog number LS-C3225. It has been validated for use in the following assays: IHC-P.
Target:	X-linked Kx blood group (McLeod syndrome) (XK)
Synonyms:	XK Antibody, KX Antibody, Kell complex 37 kDa component Antibody, Kx antigen Antibody, MCLDS Antibody, Membrane transport protein XK Antibody, X1k Antibody, XK-related protein 1 Antibody, XKR1 Antibody, XRG1 Antibody
Family / Subfamily:	Transporter / KX Blood-group Antigen
Host	XK antibody was produced in Rabbit
Clonality:	Polyclonal
Immunogen Species:	KX / XK antibody was raised against Human
Antigen Type:	Synthetic peptide
Immunogen:	KX / XK antibody was raised against synthetic peptide from human XK. Percent identity by BLAST analysis: Human, Chimpanzee, Gorilla, Gibbon, Monkey, Marmoset (100%); Rat, Panda, Dog, Rabbit (82%).
Specificity:	KLH conjugated synthetic peptide comprising amino acids 22 - 38 [LSLSSTYRSGGDRMWQA] of the human McLeod syndrome-associated Kell blood group protein (XK) protein.
Epitope:	aa22-38
Reactivity:	Human, Chimpanzee, Gorilla, Gibbon, Monkey
Purification:	Protein G purified
Presentation:	PBS, 0.09% sodium azide.
Recommended Storage:	Long term: -20°C; Short term: +4°C. Avoid repeat freeze-thaw cycles.
Usage Summary:	Immunohistochemistry: LS-B3401 was validated for use in immunohistochemistry on a panel of 21 formalin-fixed, paraffin-embedded (FFPE) human tissues after heat induced antigen retrieval in pH 6.0 citrate buffer. After incubation with the primary antibody, slides were incubated with biotinylated secondary antibody, followed by alkaline phosphatase-streptavidin and chromogen. The stained slides were evaluated by a pathologist to confirm staining specificity. The optimal working concentration for LS-B3401 was determined to be 10 ug/ml.
Uses:	IHC - Paraffin (10 µg/ml), ELISA (1:000 - 1:1000) (Optimal dilution to be determined by the researcher)
Size:	50 µg
Concentration:	1 mg/ml

Immunohistochemistry Image:



Anti-XK antibody IHC of human pancreas. Immunohistochemistry of formalin-fixed, paraffin-embedded tissue after heat-induced antigen retrieval. Antibody LS-B3401 concentration 10 ug/ml.

Immunohistochemistry Image:



Anti-XK antibody IHC of human skeletal muscle. Immunohistochemistry of formalin-fixed, paraffin-embedded tissue after heat-induced antigen retrieval. Antibody LS-B3401 concentration 10 ug/ml.

Requested From:

Japan

Laboratory Reagent For In Vitro Research Use Only

Not for resale without prior written consent from LifeSpan BioSciences, Inc.

Created on 9/23/2014

© 2014 LifeSpan BioSciences