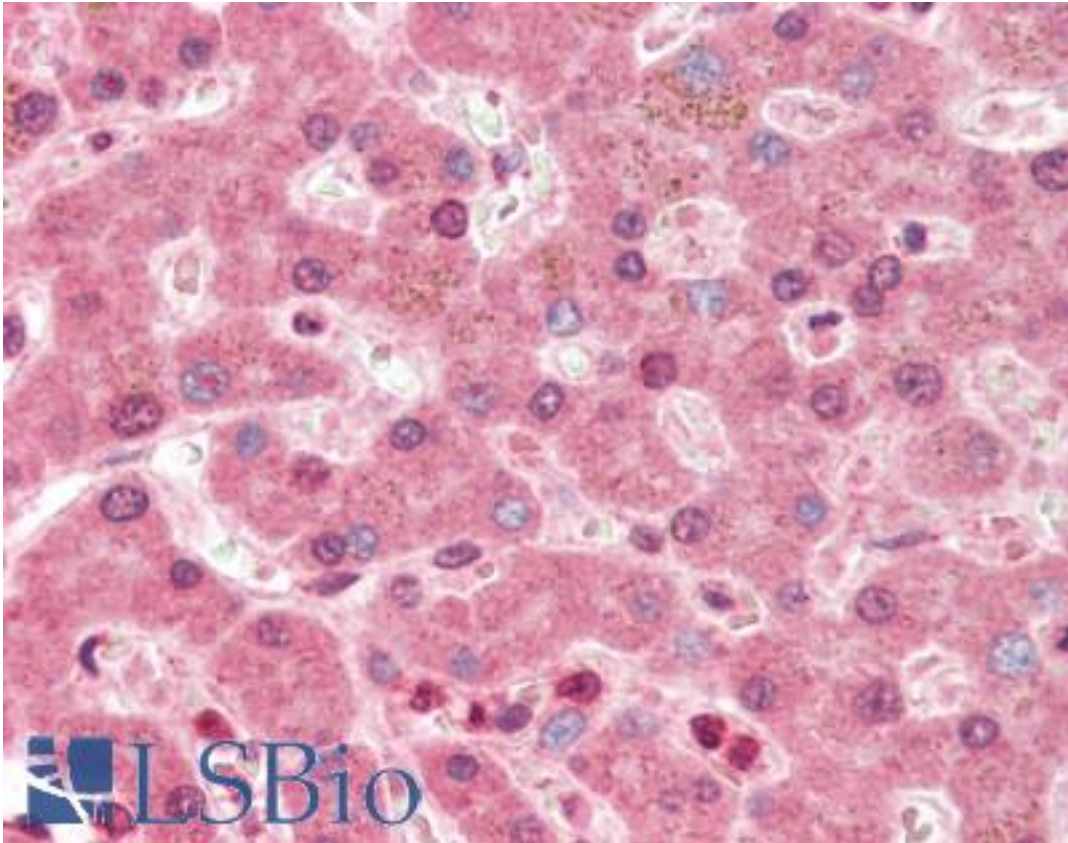


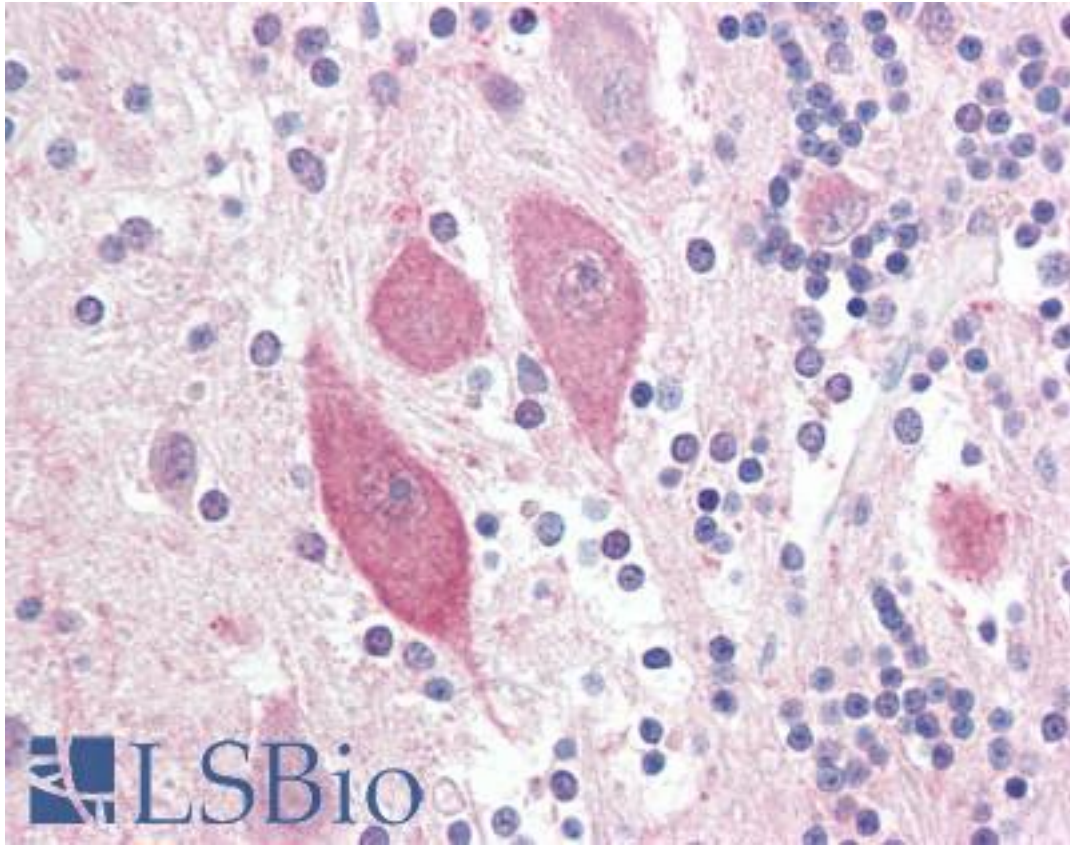
NOTCH2 / NOTCH-2 Rabbit anti-Human Polyclonal (aa2457-2471) Antibody - LS-B3399 - LSBio	
CatalogID:	LS-B3399
Validation:	This antibody replaces catalog number LS-C3047. It has been validated for use in the following assays: IHC-P.
Target:	notch 2 (NOTCH2)
Synonyms:	NOTCH2 Antibody, AGS2 Antibody, HN2 Antibody, Notch (Drosophila) homolog 2 Antibody, Notch homolog 2 (Drosophila) Antibody, Notch 2 Antibody, Notch homolog 2 Antibody, HJCYS Antibody
Host	NOTCH2 antibody was produced in Rabbit
Clonality:	Polyclonal
Immunogen Species:	NOTCH2 / NOTCH-2 antibody was raised against Human
Antigen Type:	Synthetic peptide
Immunogen:	NOTCH2 / NOTCH-2 antibody was raised against synthetic peptide from human NOTCH2. Percent identity by BLAST analysis: Human, Gorilla, Gibbon, Monkey, Tamarin (100%); Mouse, Rat, Hamster, Elephant, Rabbit (93%); Bovine, Dog, Pig (87%); Panda, Bat (80%).
Specificity:	KLH conjugated synthetic peptide comprising amino acids 2457 - 2471 [THMSEPPHNNMQVYA] of the human NOTCH homolog 2 (NOTCH2) protein.
Epitope:	aa2457-2471
Reactivity:	Human, Gorilla, Gibbon, Monkey
Predicted Reactivity:	Mouse, Rat, Hamster, Rabbit
Purification:	Protein G purified
Presentation:	PBS, 0.09% sodium azide.
Recommended Storage:	Long term: -20°C; Short term: +4°C. Avoid repeat freeze-thaw cycles.
Usage Summary:	Immunohistochemistry: LS-B3399 was validated for use in immunohistochemistry on a panel of 21 formalin-fixed, paraffin-embedded (FFPE) human tissues after heat induced antigen retrieval in pH 6.0 citrate buffer. After incubation with the primary antibody, slides were incubated with biotinylated secondary antibody, followed by alkaline phosphatase-streptavidin and chromogen. The stained slides were evaluated by a pathologist to confirm staining specificity. The optimal working concentration for LS-B3399 was determined to be 5 ug/ml.
Uses:	IHC - Paraffin (5 µg/ml), ELISA (1:000 - 1:1000) (Optimal dilution to be determined by the researcher)
Size:	50 µg
Concentration:	1 mg/ml

Immunohistochemistry Image:



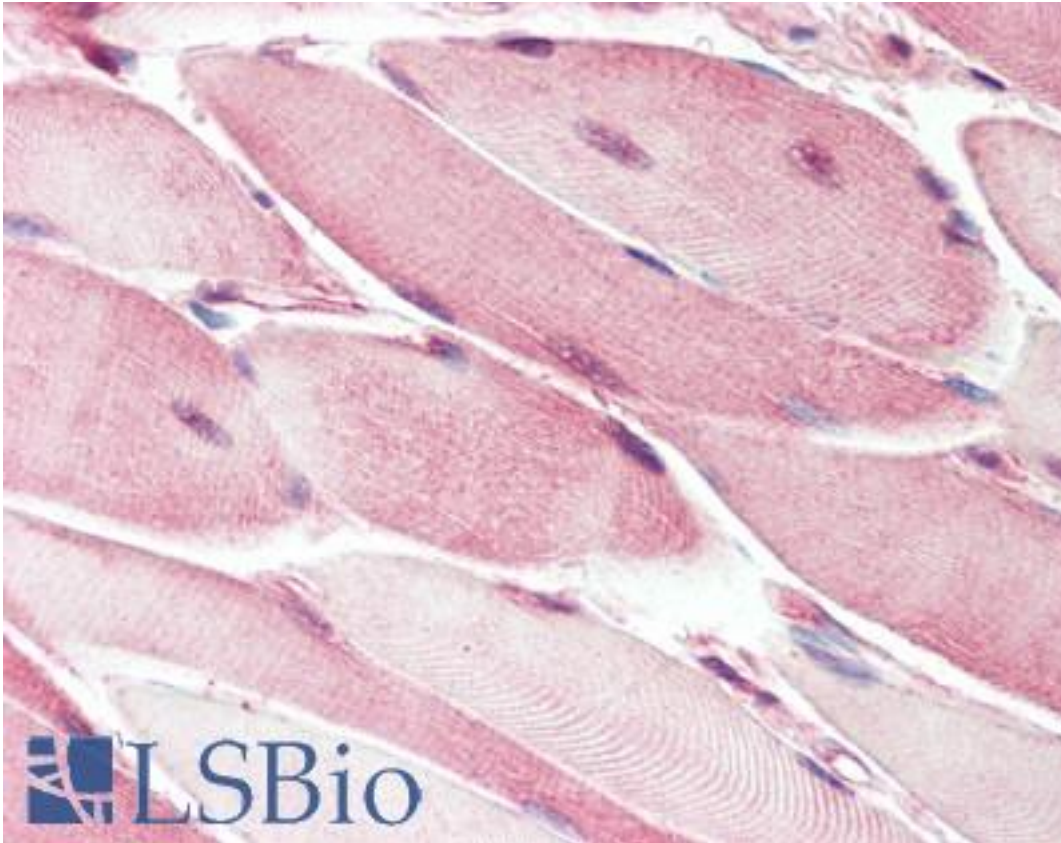
Anti-NOTCH2 antibody IHC of human liver. Immunohistochemistry of formalin-fixed, paraffin-embedded tissue after heat-induced antigen retrieval. Antibody LS-B3399 concentration 5 ug/ml.

Immunohistochemistry Image:



Anti-NOTCH2 antibody IHC of human brain, cerebellum. Immunohistochemistry of formalin-fixed, paraffin-embedded tissue after heat-induced antigen retrieval. Antibody LS-B3399 concentration 5 ug/ml.

Immunohistochemistry Image:



Anti-NOTCH2 antibody IHC of human skeletal muscle. Immunohistochemistry of formalin-fixed, paraffin-embedded tissue after heat-induced antigen retrieval. Antibody LS-B3399 concentration 5 ug/ml.

Requested From:

Japan

Laboratory Reagent For In Vitro Research Use Only

Not for resale without prior written consent from LifeSpan BioSciences, Inc.

Created on 9/23/2014

© 2014 LifeSpan BioSciences