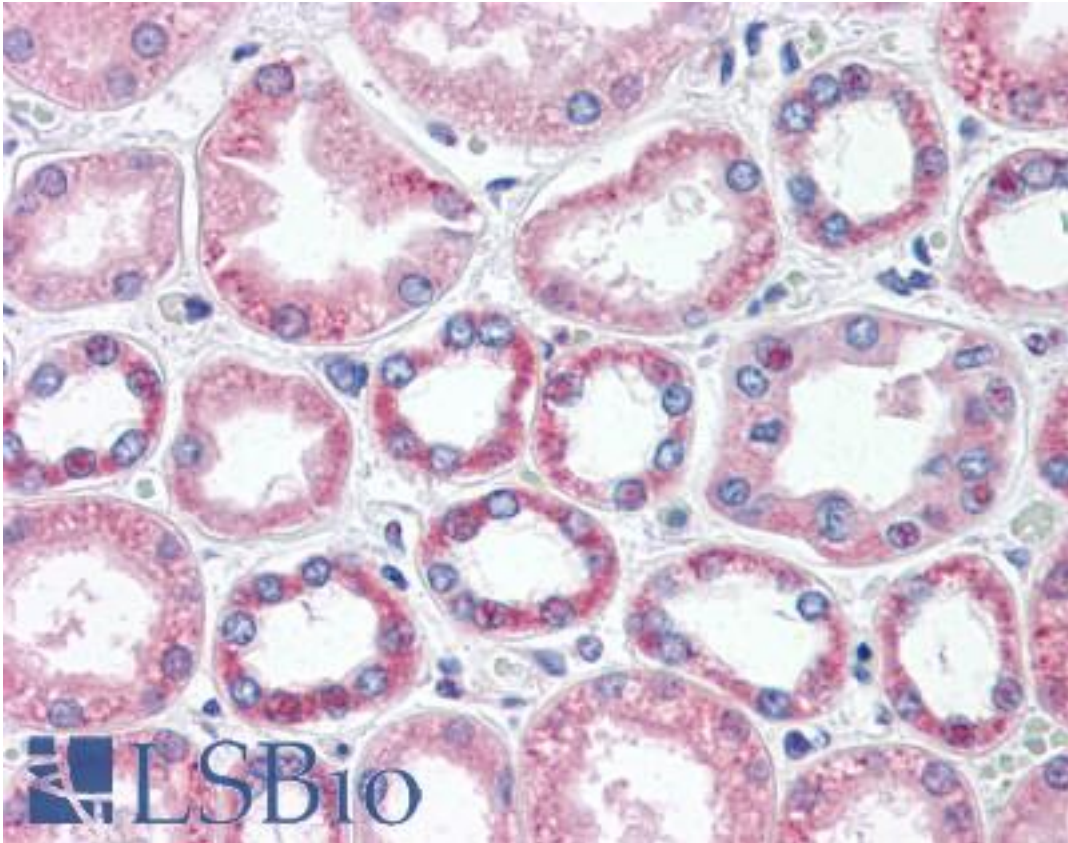


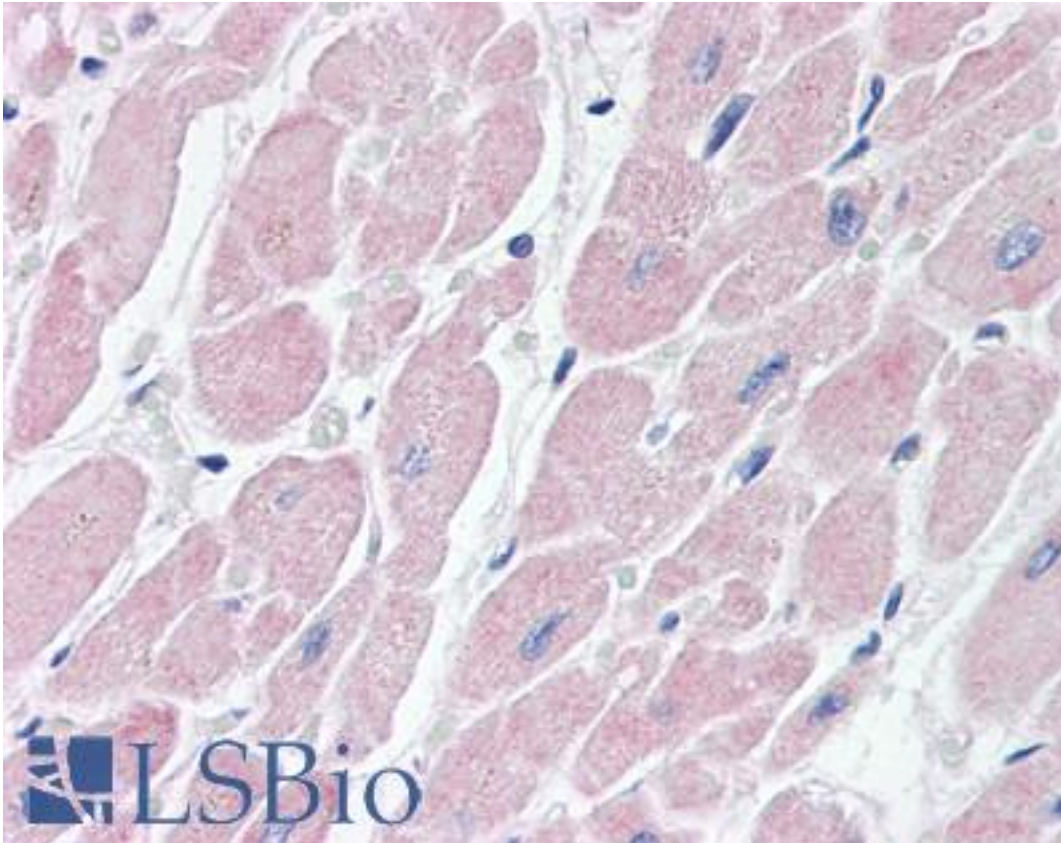
BAI3 Rabbit anti-Human Polyclonal (aa1506-1522) Antibody - LS-B3397 - LSBio	
CatalogID:	LS-B3397
Validation:	This antibody replaces catalog number LS-C2959. It has been validated for use in the following assays: IHC-P.
Target:	brain-specific angiogenesis inhibitor 3 (BAI3)
Synonyms:	BAI3 Antibody, KIAA0550 Antibody
Family / Subfamily:	GPCR / Orphan-B
Host	BAI3 antibody was produced in Rabbit
Clonality:	Polyclonal
Immunogen Species:	BAI3 antibody was raised against Human
Antigen Type:	Synthetic peptide
Immunogen:	BAI3 antibody was raised against synthetic peptide from human BAI3. Percent identity by BLAST analysis: Human, Gorilla, Gibbon, Marmoset, Mouse, Rat, Elephant, Panda, Dog, Bat, Rabbit, Opossum, Chicken, Lizard, Xenopus (100%); Bovine, Horse, Pufferfish, Zebrafish (94%); Stickleback (88%).
Specificity:	KLH conjugated synthetic peptide comprising amino acids 1506 - 1522 [CLNLPLDVQEGDFQTEV] of the human brain-specific angiogenesis inhibitor 3 (BAI3) protein.
Epitope:	aa1506-1522
Reactivity:	Human, Gorilla, Gibbon, Monkey, Mouse, Rat, Bat, Dog, Rabbit, Chicken, Xenopus
Predicted Reactivity:	Bovine, Horse, Zebrafish
Purification:	Protein G purified
Presentation:	PBS, 0.09% sodium azide.
Recommended Storage:	Long term: -20°C; Short term: +4°C. Avoid repeat freeze-thaw cycles.
Usage Summary:	Immunohistochemistry: LS-B3397 was validated for use in immunohistochemistry on a panel of 21 formalin-fixed, paraffin-embedded (FFPE) human tissues after heat induced antigen retrieval in pH 6.0 citrate buffer. After incubation with the primary antibody, slides were incubated with biotinylated secondary antibody, followed by alkaline phosphatase-streptavidin and chromogen. The stained slides were evaluated by a pathologist to confirm staining specificity. The optimal working concentration for LS-B3397 was determined to be 15 ug/ml.
Uses:	IHC - Paraffin (15 µg/ml), ELISA (1:000 - 1:1000) (Optimal dilution to be determined by the researcher)
Size:	50 µg
Concentration:	1 mg/ml

Immunohistochemistry Image:



Anti-BAI3 antibody IHC of human kidney. Immunohistochemistry of formalin-fixed, paraffin-embedded tissue after heat-induced antigen retrieval. Antibody LS-B3397 concentration 15 ug/ml.

Immunohistochemistry Image:



Anti-BAI3 antibody IHC of human heart. Immunohistochemistry of formalin-fixed, paraffin-embedded tissue after heat-induced antigen retrieval. Antibody LS-B3397 concentration 15 ug/ml.

Requested From:

Japan

Laboratory Reagent For In Vitro Research Use Only

Not for resale without prior written consent from LifeSpan BioSciences, Inc.

Created on 9/23/2014

© 2014 LifeSpan BioSciences