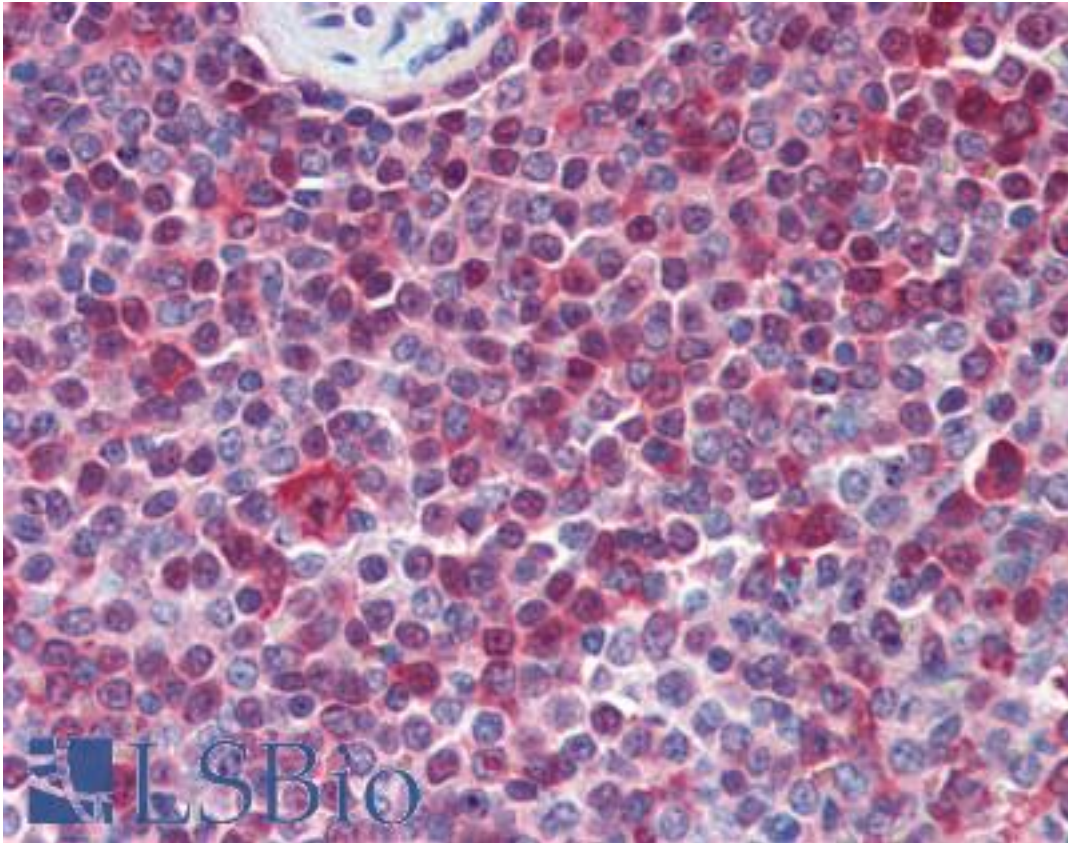


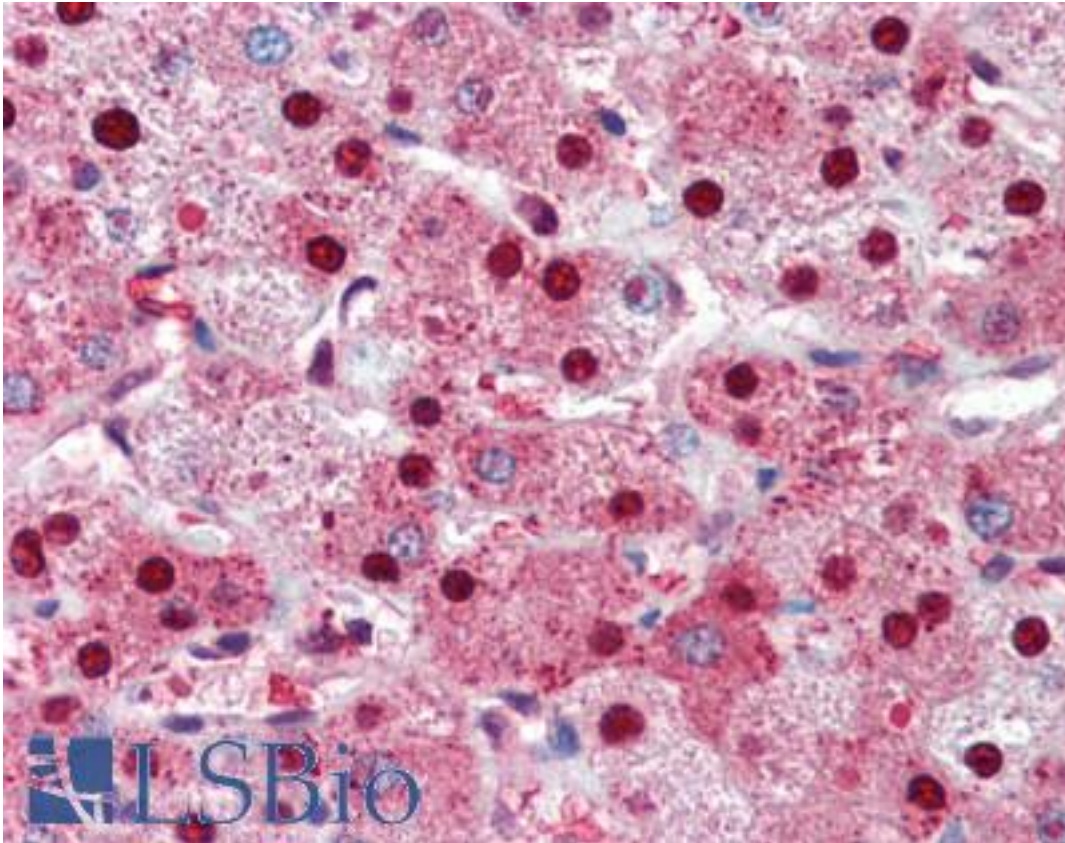
PARP1 / PARP Rabbit anti-Human Polyclonal (N-Terminus) Antibody - LS-B3395 - LSBio	
CatalogID:	LS-B3395
Validation:	This antibody replaces catalog number LS-C50687. It has been validated for use in the following assays: IHC-P.
Target:	poly (ADP-ribose) polymerase 1 (PARP1)
Synonyms:	PARP1 Antibody, ADPRT Antibody, ADP-ribosyltransferase NAD(+) Antibody, Adp-ribosyltransferase Antibody, ADPRT1 Antibody, ARTD1 Antibody, ADPRT 1 Antibody, Poly(ADP-ribose) synthetase Antibody, Poly(ADP-ribosyl)transferase Antibody, PARP Antibody, Poly [ADP-ribose] polymerase 1 Antibody, PADPRT-1 Antibody, PARP-1 Antibody, Poly (ADP-ribose) polymerase 1 Antibody, Poly(ADP-ribose) polymerase Antibody, Poly[ADP-ribose] synthase 1 Antibody, PPOL Antibody
Host	PARP1 antibody was produced in Rabbit
Clonality:	Polyclonal
Immunogen Species:	PARP1 / PARP antibody was raised against Human
Antigen Type:	Synthetic peptide
Immunogen:	PARP1 / PARP antibody was raised against a synthetic peptide derived from N-terminus of human PARP protein.
Epitope:	N-Terminus
Reactivity:	Human, Mouse, Rat
Purification:	Immunoaffinity purified
Presentation:	10 mM PBS, pH 7.4, BSA, sodium azide.
Recommended Storage:	Long term: -20°C; Short term: +4°C. Avoid repeat freeze-thaw cycles.
Usage Summary:	Immunohistochemistry: LS-B3395 was validated for use in immunohistochemistry on a panel of 21 formalin-fixed, paraffin-embedded (FFPE) human tissues after heat induced antigen retrieval in pH 6.0 citrate buffer. After incubation with the primary antibody, slides were incubated with biotinylated secondary antibody, followed by alkaline phosphatase-streptavidin and chromogen. The stained slides were evaluated by a pathologist to confirm staining specificity. The optimal working concentration for LS-B3395 was determined to be 15 ug/ml.
Uses:	IHC - Paraffin (15 µg/ml), Western blot (Optimal dilution to be determined by the researcher)
Size:	250 µl
Concentration:	0.2 mg/ml

Immunohistochemistry Image:



Anti-PARP antibody IHC of human spleen. Immunohistochemistry of formalin-fixed, paraffin-embedded tissue after heat-induced antigen retrieval. Antibody LS-B3395 concentration 15 ug/ml.

Immunohistochemistry Image:



Anti-PARP antibody IHC of human liver. Immunohistochemistry of formalin-fixed, paraffin-embedded tissue after heat-induced antigen retrieval. Antibody LS-B3395 concentration 15 ug/ml.

Requested From:

Japan

Laboratory Reagent For In Vitro Research Use Only

Not for resale without prior written consent from LifeSpan BioSciences, Inc.

Created on 9/23/2014

© 2014 LifeSpan BioSciences