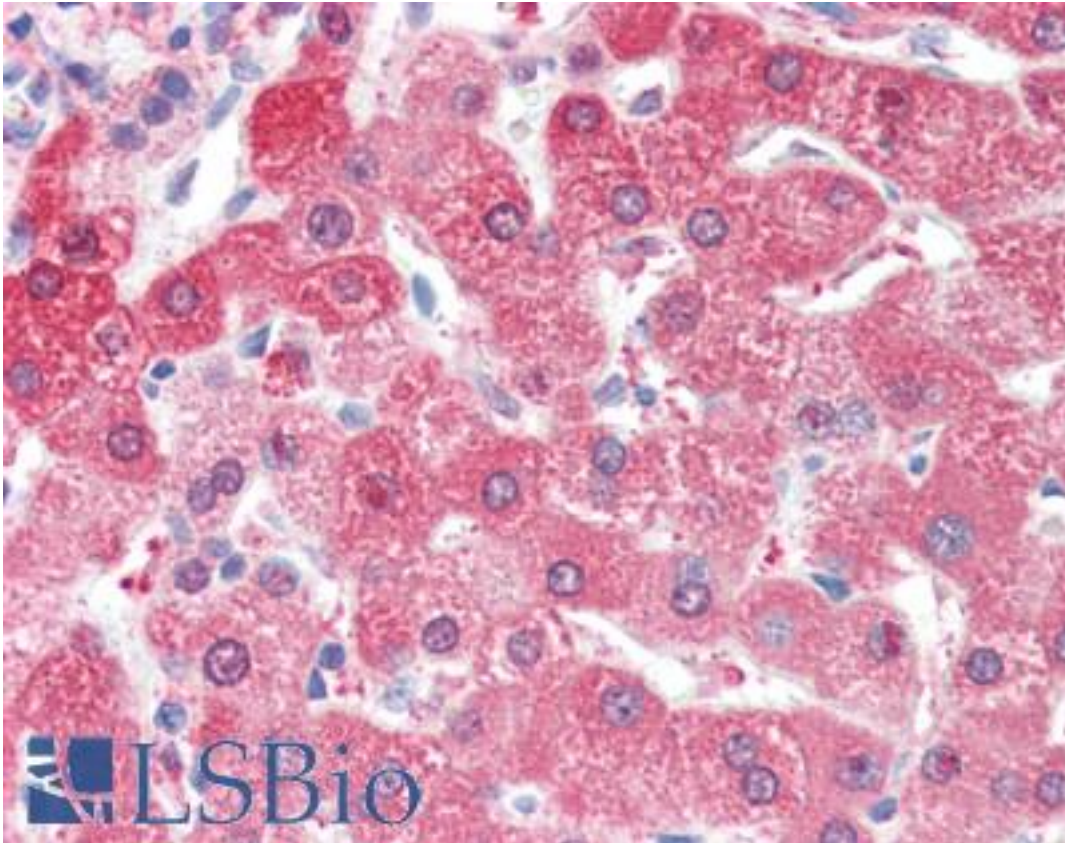


**ALDH2 Rabbit anti-Human Polyclonal (N-Terminus) Antibody - LS-B3390 - LSBio**

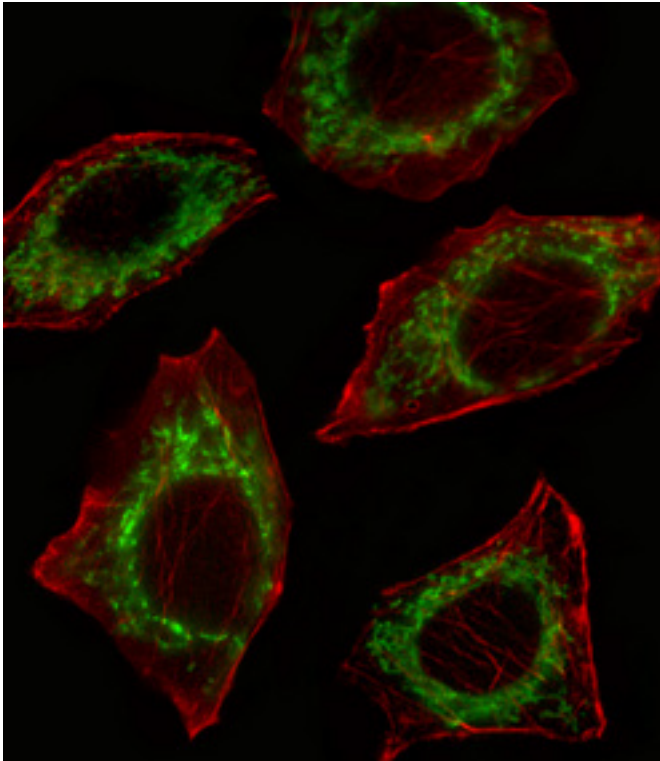
<b>CatalogID:</b>	LS-B3390
<b>Validation:</b>	This antibody replaces catalog number LS-C98146. It has been validated for use in the following assays: IHC-P.
<b>Target:</b>	aldehyde dehydrogenase 2 family (mitochondrial) (ALDH2)
<b>Synonyms:</b>	ALDH2 Antibody, Acetaldehyde dehydrogenase 2 Antibody, ALDH-E2 Antibody, ALDH class 2 Antibody, ALDHI Antibody, ALDM Antibody, Liver mitochondrial ALDH Antibody
<b>Host</b>	ALDH2 antibody was produced in Rabbit
<b>Clonality:</b>	Polyclonal
<b>Immunogen Species:</b>	ALDH2 antibody was raised against Human
<b>Antigen Type:</b>	Synthetic peptide
<b>Immunogen:</b>	ALDH2 antibody was raised against kLH conjugated synthetic peptide selected from the N-terminal region of human ALDH2.
<b>Epitope:</b>	N-Terminus
<b>Reactivity:</b>	Human
<b>Purification:</b>	Immunoaffinity purified
<b>Presentation:</b>	PBS, 0.09% sodium azide
<b>Recommended Storage:</b>	Maintain refrigerated at 2-8°C for up to 6 months. For long term storage store at -20°C.
<b>Usage Summary:</b>	Immunohistochemistry: LS-B3390 was validated for use in immunohistochemistry on a panel of 21 formalin-fixed, paraffin-embedded (FFPE) human tissues after heat induced antigen retrieval in pH 6.0 citrate buffer. After incubation with the primary antibody, slides were incubated with biotinylated secondary antibody, followed by alkaline phosphatase-streptavidin and chromogen. The stained slides were evaluated by a pathologist to confirm staining specificity. The optimal working concentration for LS-B3390 was determined to be 10 ug/ml.
<b>Uses:</b>	IHC - Paraffin (10 µg/ml), Immunofluorescence (1:10 - 1:50), Western blot (1:1000), Flow Cytometry (Optimal dilution to be determined by the researcher)
<b>Size:</b>	50 µg
<b>Concentration:</b>	0.25 mg/ml

**Immunohistochemistry Image:**



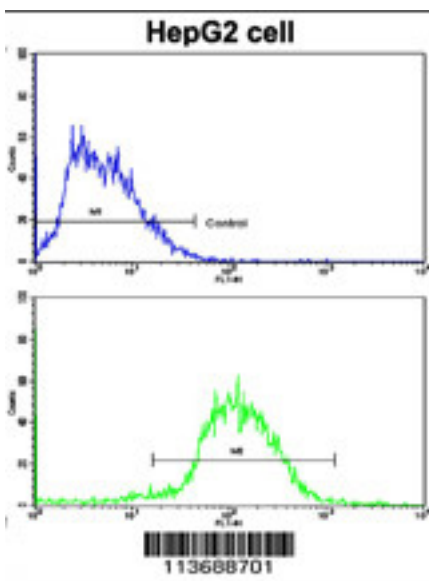
Anti-ALDH2 antibody IHC of human liver. Immunohistochemistry of formalin-fixed, paraffin-embedded tissue after heat-induced antigen retrieval. Antibody LS-B3390 concentration 10 ug/ml.

### Immunofluorescence Image:



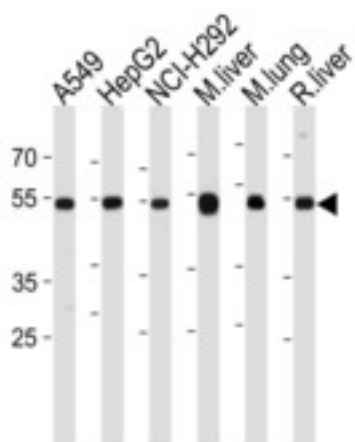
Fluorescent confocal image of A549 cell stained with ALDH2 Antibody (N-term). A549 cells were fixed with 4% PFA (20 min), permeabilized with Triton X-100 (0.1%, 10 min), then incubated with ALDH2 primary antibody (1:25, 1 h at 37°C). For secondary antibody, Alexa Fluor 488 conjugated donkey anti-rabbit antibody (1:400, 50 min at 37°C). Cytoplasmic actin was counterstained with Alexa Fluor 555 (red) conjugated Phalloidin (7 units/ml, 1 h at 37°C). Nuclei were counterstained with DAPI (blue) (10 µg/ml, 10 min). ALDH2 immunoreactivity is localized to Mitochondrion significantly.

### Flow Cytometry Image:



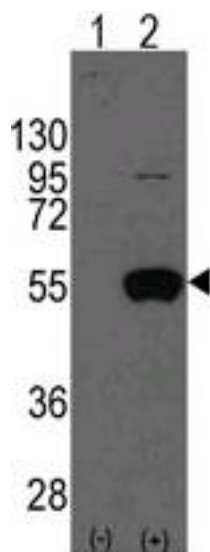
Flow cytometry of HepG2 cells using ALDH2 Antibody (N-term) (bottom histogram) compared to a negative control cell (top histogram). FITC-conjugated goat-anti-rabbit secondary antibodies were used for the analysis.

**Western Blot Image:**



LDH2 Antibody (N-term) western blot analysis in A549,HepG2,NCI-H292 cell line,mouse liver,lung and rat liver tissue lysates (35 ug/lane).This demonstrates the ALDH2 antibody detected the ALDH2 protein (arrow).

**Western Blot Image:**



Western blot of ALDH2 (arrow) in 293 cell lysates (2 ug/lane) either nontransfected (Lane 1) or transiently transfected with the ALDH2 gene (Lane 2)

**Requested From:**

Japan

Laboratory Reagent For In Vitro Research Use Only

Not for resale without prior written consent from LifeSpan BioSciences, Inc.

Created on 9/23/2014

© 2014 LifeSpan BioSciences