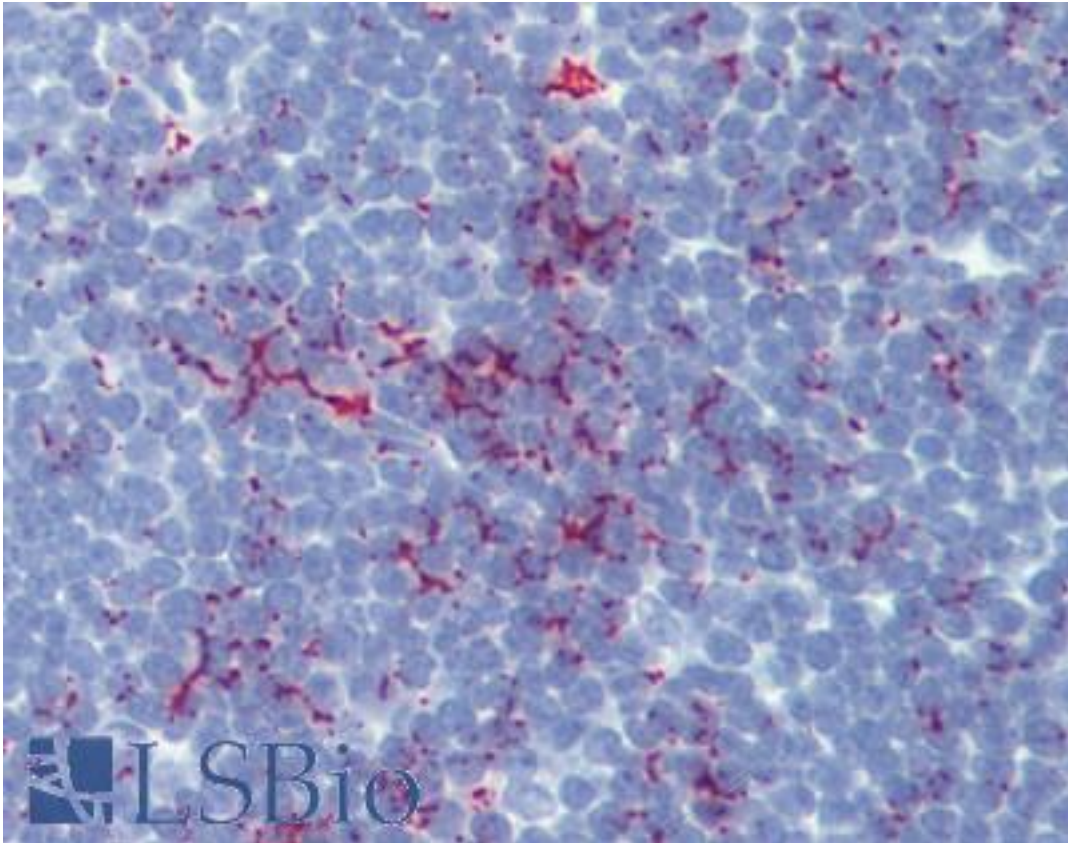


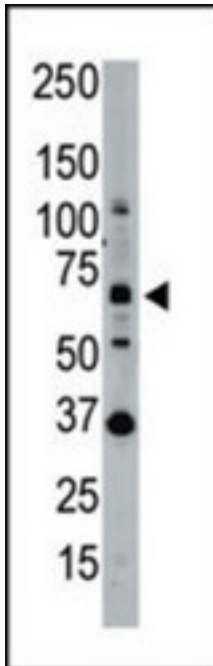
SENP1 Rabbit anti-Human Polyclonal (N-Terminus) Antibody - LS-B3387 - LSBio	
<b>CatalogID:</b>	LS-B3387
<b>Validation:</b>	This antibody replaces catalog number LS-C98779. It has been validated for use in the following assays: IHC-P.
<b>Target:</b>	SUMO1/sentrin specific peptidase 1 (SENP1)
<b>Synonyms:</b>	SENP1 Antibody, Sentrin-specific protease 1 Antibody, SuPr-2 Antibody
<b>Family / Subfamily:</b>	Protease / Cysteine C48
<b>Host</b>	SENP1 antibody was produced in Rabbit
<b>Clonality:</b>	Polyclonal
<b>Immunogen Species:</b>	SENP1 antibody was raised against Human
<b>Antigen Type:</b>	Synthetic peptide
<b>Immunogen:</b>	SENP1 antibody was raised against kLH conjugated synthetic peptide selected from the N-terminal region of human SENP1.
<b>Epitope:</b>	N-Terminus
<b>Reactivity:</b>	Human
<b>Purification:</b>	Ammonium sulfate precipitation
<b>Presentation:</b>	PBS, 0.09% sodium azide
<b>Recommended Storage:</b>	Maintain refrigerated at 2-8°C for up to 6 months. For long term storage store at -20°C.
<b>Usage Summary:</b>	Immunohistochemistry: LS-B3387 was validated for use in immunohistochemistry on a panel of 21 formalin-fixed, paraffin-embedded (FFPE) human tissues after heat induced antigen retrieval in pH 6.0 citrate buffer. After incubation with the primary antibody, slides were incubated with biotinylated secondary antibody, followed by alkaline phosphatase-streptavidin and chromogen. The stained slides were evaluated by a pathologist to confirm staining specificity. The optimal working concentration for LS-B3387 was determined to be 10 ug/ml.
<b>Uses:</b>	IHC - Paraffin (10 µg/ml), Western blot (1:1000) (Optimal dilution to be determined by the researcher)
<b>Size:</b>	200 µl

**Immunohistochemistry Image:**



Anti-SEN1 antibody IHC of human thymus. Immunohistochemistry of formalin-fixed, paraffin-embedded tissue after heat-induced antigen retrieval. Antibody LS-B3387 concentration 10 ug/ml.

**Western Blot Image:**



Western blot analysis of SENP1 polyclonal antibody in whole HL60 cell lysate: SENP1 (Arrow) was detected using purified Pab. Secondary HRP-anti-rabbit was used for signal visualization with chemiluminescence.

**Requested From:**

Japan

Laboratory Reagent For In Vitro Research Use Only

Not for resale without prior written consent from LifeSpan BioSciences, Inc.

Created on 9/23/2014

© 2014 LifeSpan BioSciences