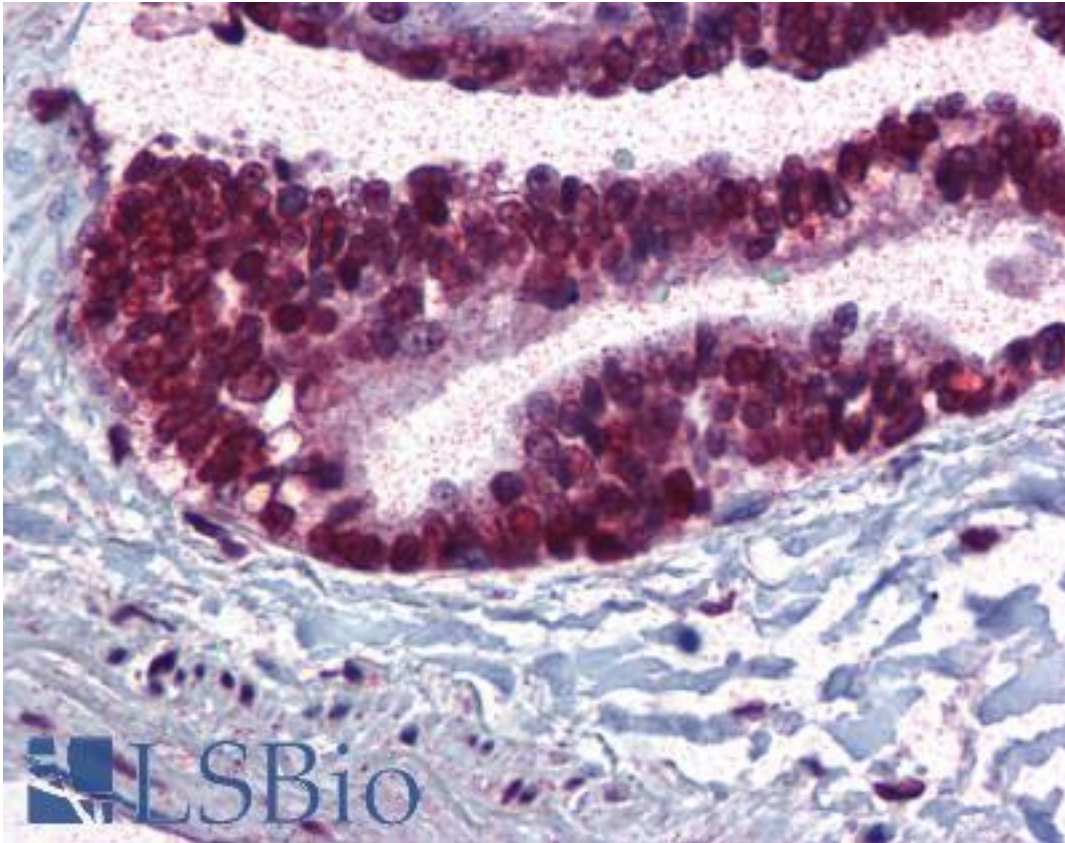


APC6 / CDC16 Rabbit anti-Human Polyclonal (pThr580) Antibody - LS-B337 - LSBio	
CatalogID:	LS-B337
Validation:	This antibody replaces catalog number LS-C18969. It has been validated for use in the following assays: IHC.
Target:	cell division cycle 16 (CDC16)
Synonyms:	CDC16 Antibody, ANAPC6 Antibody, APC6 Antibody, CDC16 homolog Antibody, Cyclosome subunit 6 Antibody, CDC16Hs Antibody, CUT9 Antibody
Host	CDC16 antibody was produced in Rabbit
Clonality:	Polyclonal
Immunogen Species:	APC6 / CDC16 antibody was raised against Human
Antigen Type:	Synthetic peptide
Immunogen:	APC6 / CDC16 antibody was raised against synthetic peptide from human CDC16 / Apc6.
Specificity:	Amino acids 575-588 of Human Apc6 protein.
Epitope:	pThr580
Reactivity:	Human
Purification:	Immunoaffinity purified
Presentation:	0.02 M potassium phosphate, 0.15 M sodium chloride, pH 7.2, 0.01% sodium azide.
Recommended Storage:	Long term: -20°C; Short term: +4°C. Avoid repeat freeze-thaw cycles.
Usage Summary:	Immunohistochemistry: LS-B337 was validated for use in immunohistochemistry on a panel of 21 formalin-fixed, paraffin-embedded (FFPE) human tissues after heat induced antigen retrieval in pH 6.0 citrate buffer. After incubation with the primary antibody, slides were incubated with biotinylated secondary antibody, followed by alkaline phosphatase-streptavidin and chromogen. The stained slides were evaluated by a pathologist to confirm staining specificity. The optimal working concentration for LS-B337 was determined to be 5 ug/ml.
Uses:	IHC - Paraffin (5 µg/ml), Immunofluorescence, Western blot (1:500 - 1:3000), ELISA (1:10000) (Optimal dilution to be determined by the researcher)
Size:	50 µg

Immunohistochemistry Image:



Anti-CDC16 / Apc6 antibody IHC of human lung, respiratory epithelium.
Immunohistochemistry of formalin-fixed, paraffin-embedded tissue after heat-induced antigen retrieval. Antibody LS-B337 concentration 5 ug/ml.

Western Blot Image:



Anti-APC6 pT580 Antibody - Western Blot. Western blot of Affinity Purified anti-APC6 pT580 antibody shows detection of a band ~72 kD corresponding to phosphorylated human APC6 (arrowhead lane 1). Lane 1 - nocodazole treated HeLa whole cell lysate. Lane 2 - Reactivity is not seen in lysates from asynchronous HeLa whole cell cultures. Each lane contains approximately 35 ug of lysates, separated by 4-20% SDS-PAGE Tris-HEPES and then transferred to nitrocellulose. After blocking the membrane was probed with the primary antibody diluted to 1:1000 overnight at 4C followed by washes and reaction with a 1:10000 dilution of IRDye800 conjugated Gt-a-Rabbit IgG [H&L] MX (for 45 min at room temperature. IRDye800 fluorescence image was captured using the Odyssey Infrared Imaging System developed by LI-COR. IRDye is a trademark of LI-COR, Inc. Other detection systems will yield similar results.

Requested From:

Japan

Laboratory Reagent For In Vitro Research Use Only

Not for resale without prior written consent from LifeSpan BioSciences, Inc.

Created on 9/23/2014

© 2014 LifeSpan BioSciences