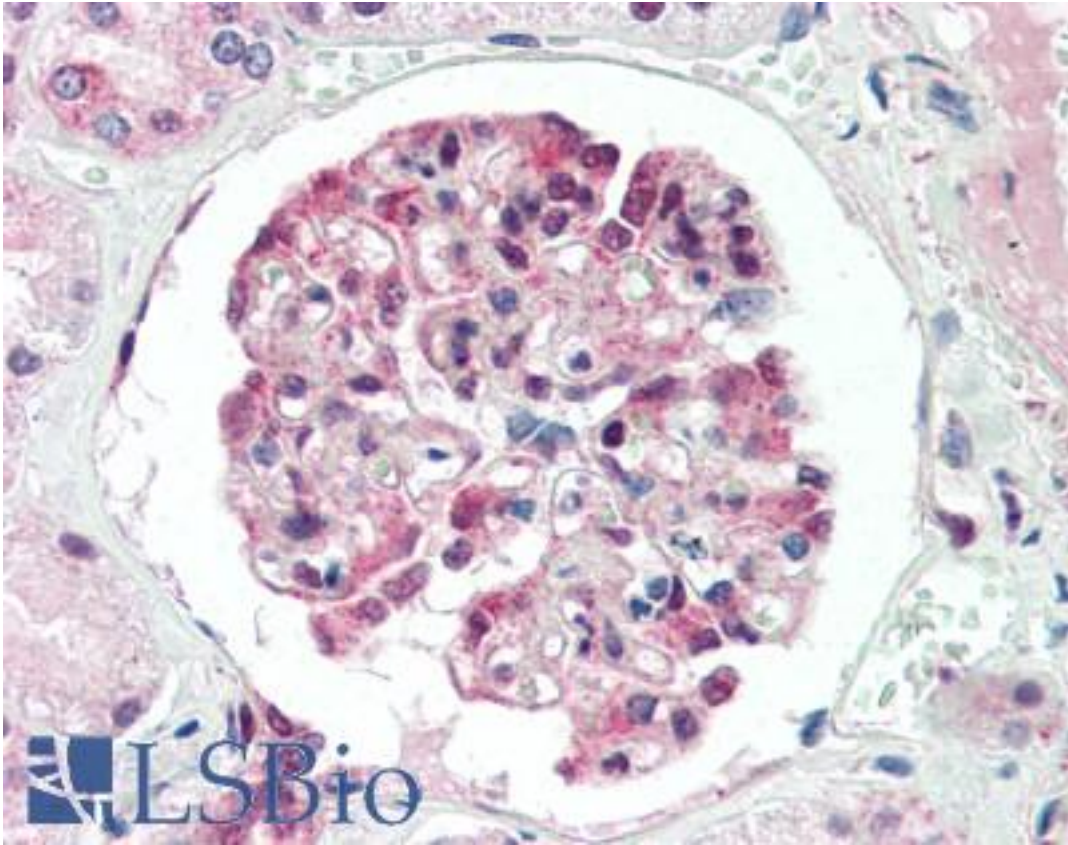


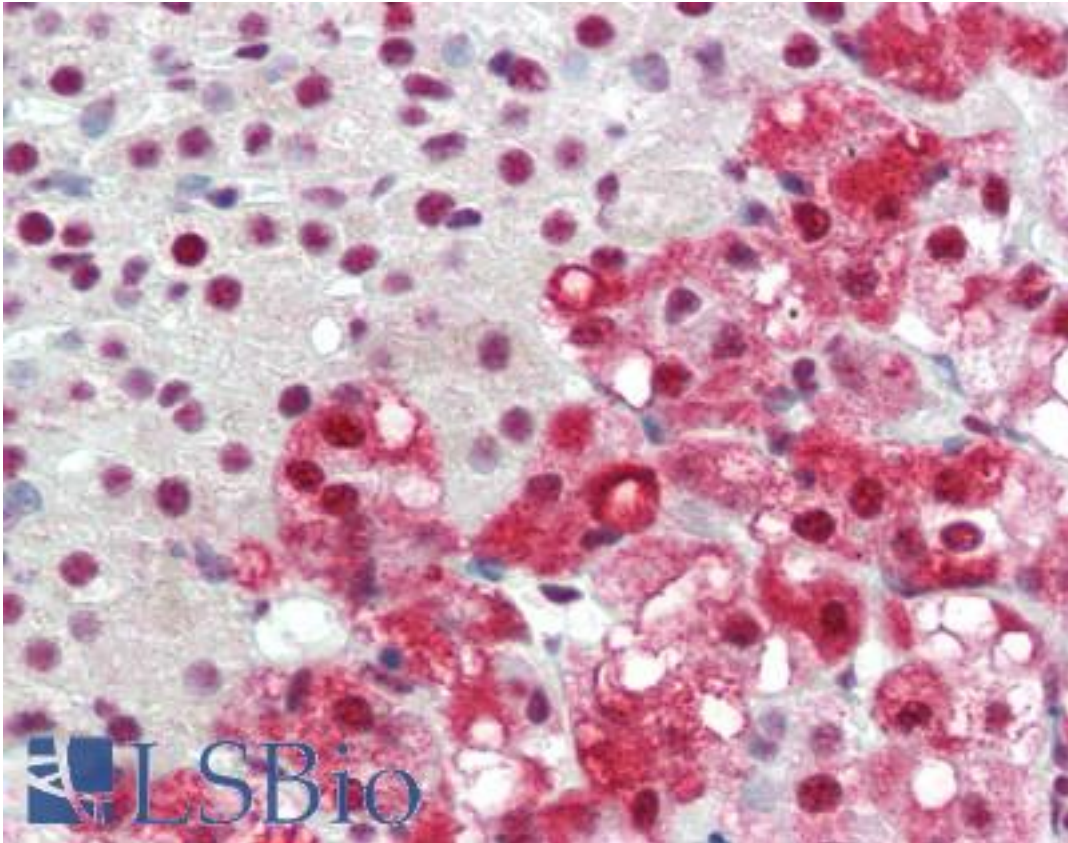
ID3 Rabbit anti-Human Polyclonal (C-Terminus) Antibody - LS-B3365 - LSBio	
<b>CatalogID:</b>	LS-B3365
<b>Validation:</b>	This antibody replaces catalog number LS-C50438. It has been validated for use in the following assays: IHC-P.
<b>Target:</b>	inhibitor of DNA binding 3, dominant negative helix-loop-helix protein (ID3)
<b>Synonyms:</b>	ID3 Antibody, 1R21 Antibody, BHLHb25 Antibody, HEIR-1 Antibody, HEIR1 Antibody, Inhibitor of DNA binding 3 Antibody
<b>Host</b>	ID3 antibody was produced in Rabbit
<b>Clonality:</b>	Polyclonal
<b>Immunogen Species:</b>	ID3 antibody was raised against Human
<b>Antigen Type:</b>	Synthetic peptide
<b>Immunogen:</b>	ID3 antibody was raised against synthetic peptide corresponding to C-terminal of human Id3.
<b>Epitope:</b>	C-Terminus
<b>Reactivity:</b>	Human
<b>Purification:</b>	Immunoaffinity purified
<b>Presentation:</b>	10 mM PBS, pH 7.4, BSA, sodium azide.
<b>Recommended Storage:</b>	Store at 2°C to 8°C degrees. Do not freeze.
<b>Usage Summary:</b>	Immunohistochemistry: LS-B3365 was validated for use in immunohistochemistry on a panel of 21 formalin-fixed, paraffin-embedded (FFPE) human tissues after heat induced antigen retrieval in pH 6.0 citrate buffer. After incubation with the primary antibody, slides were incubated with biotinylated secondary antibody, followed by alkaline phosphatase-streptavidin and chromogen. The stained slides were evaluated by a pathologist to confirm staining specificity. The optimal working concentration for LS-B3365 was determined to be 10 ug/ml.
<b>Uses:</b>	IHC - Paraffin (10 µg/ml) (Optimal dilution to be determined by the researcher)
<b>Size:</b>	250 µl
<b>Concentration:</b>	0.2 mg/ml

**Immunohistochemistry Image:**



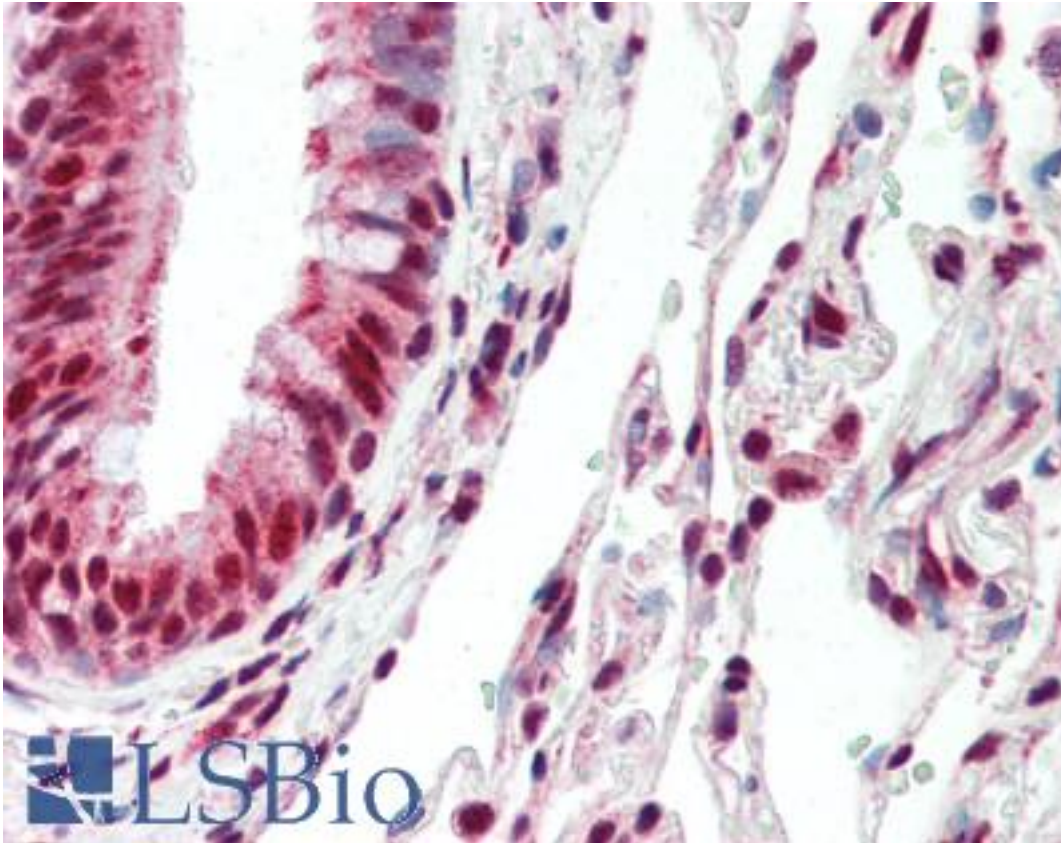
Anti-ID3 antibody IHC of human kidney. Immunohistochemistry of formalin-fixed, paraffin-embedded tissue after heat-induced antigen retrieval. Antibody LS-B3365 concentration 10 ug/ml.

**Immunohistochemistry Image:**



Anti-ID3 antibody IHC of human adrenal. Immunohistochemistry of formalin-fixed, paraffin-embedded tissue after heat-induced antigen retrieval. Antibody LS-B3365 concentration 10 ug/ml.

**Immunohistochemistry Image:**



Anti-ID3 antibody IHC of human lung. Immunohistochemistry of formalin-fixed, paraffin-embedded tissue after heat-induced antigen retrieval. Antibody LS-B3365 concentration 10 ug/ml.

**Requested From:**

Japan

Laboratory Reagent For In Vitro Research Use Only

Not for resale without prior written consent from LifeSpan BioSciences, Inc.

Created on 9/23/2014

© 2014 LifeSpan BioSciences