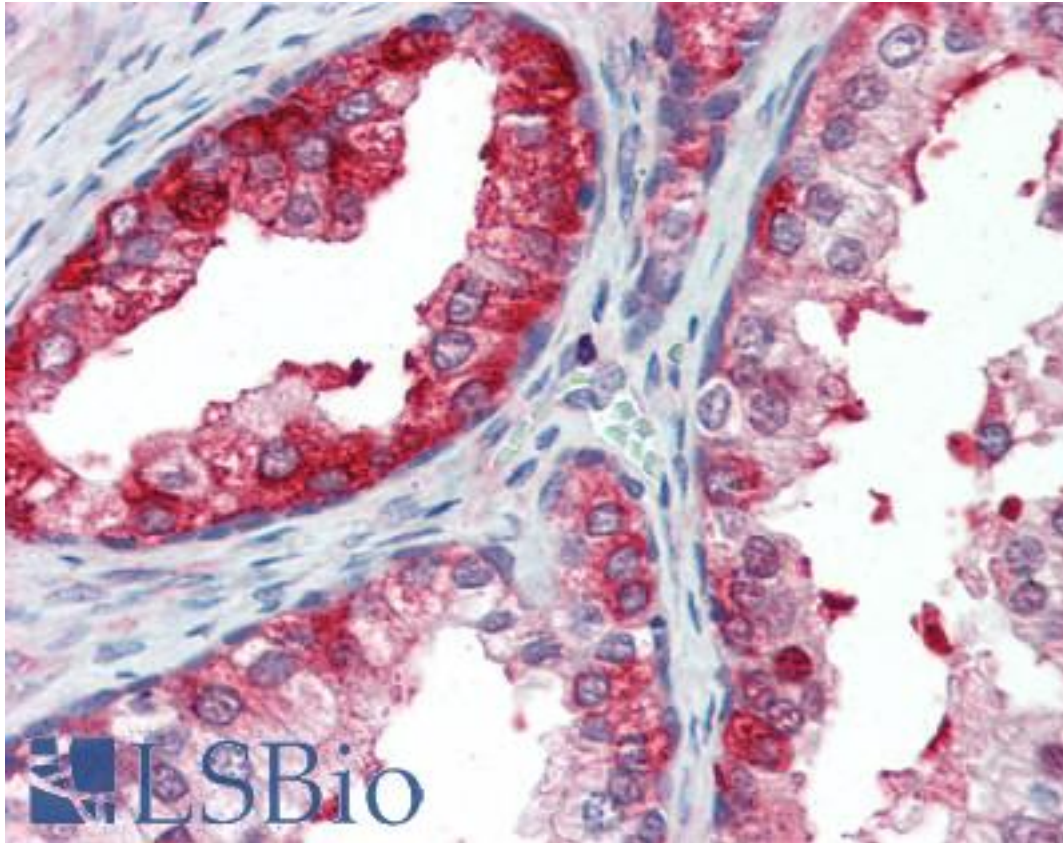


**SKP2 Rabbit anti-Human Polyclonal (aa221-425) Antibody - LS-B3361 - LSBio**

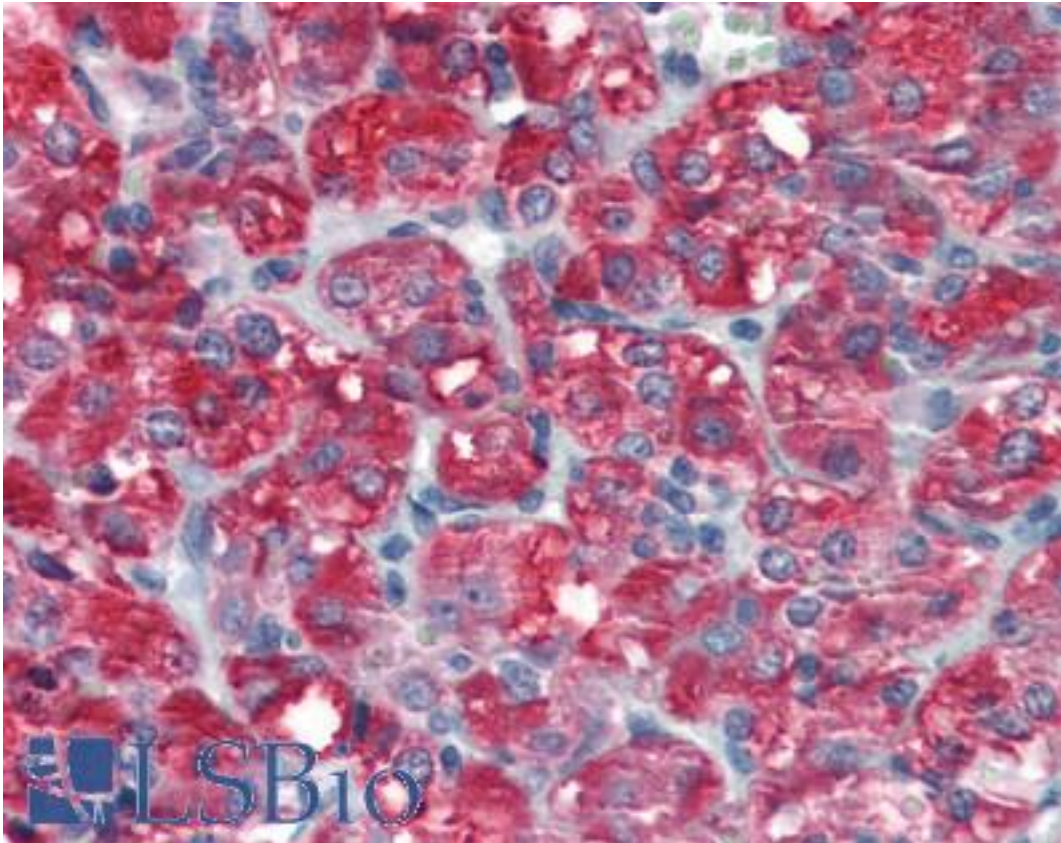
<b>CatalogID:</b>	LS-B3361
<b>Validation:</b>	This antibody replaces catalog number LS-C50421. It has been validated for use in the following assays: IHC-P.
<b>Target:</b>	S-phase kinase-associated protein 2, E3 ubiquitin protein ligase (SKP2)
<b>Synonyms:</b>	SKP2 Antibody, F-box/LRR-repeat protein 1 Antibody, FBL1 Antibody, FLB1 Antibody, F-box protein Skp2 Antibody, FBXL1 Antibody, p45 Antibody, p45skp2 Antibody
<b>Host</b>	SKP2 antibody was produced in Rabbit
<b>Clonality:</b>	Polyclonal
<b>Immunogen Species:</b>	SKP2 antibody was raised against Human
<b>Immunogen:</b>	SKP2 antibody was raised against recombinant protein encoding aa 221-425 of human Skp2 alpha.
<b>Epitope:</b>	aa221-425
<b>Reactivity:</b>	Human
<b>Purification:</b>	Immunoaffinity purified
<b>Presentation:</b>	10 mM PBS, pH 7.4, BSA, sodium azide.
<b>Recommended Storage:</b>	Store at 2°C to 8°C degrees. Do not freeze.
<b>Usage Summary:</b>	Immunohistochemistry: LS-B3361 was validated for use in immunohistochemistry on a panel of 21 formalin-fixed, paraffin-embedded (FFPE) human tissues after heat induced antigen retrieval in pH 6.0 citrate buffer. After incubation with the primary antibody, slides were incubated with biotinylated secondary antibody, followed by alkaline phosphatase-streptavidin and chromogen. The stained slides were evaluated by a pathologist to confirm staining specificity. The optimal working concentration for LS-B3361 was determined to be 10 ug/ml.
<b>Uses:</b>	IHC - Paraffin (10 µg/ml) (Optimal dilution to be determined by the researcher)
<b>Size:</b>	250 µl
<b>Concentration:</b>	0.2 mg/ml

**Immunohistochemistry Image:**



Anti-SKP2 antibody IHC staining of human prostate. Immunohistochemistry of formalin-fixed, paraffin-embedded tissue after heat-induced antigen retrieval. Antibody LS-B3361 concentration 10 ug/ml.

**Immunohistochemistry Image:**



Anti-SKP2 antibody IHC staining of human adrenal. Immunohistochemistry of formalin-fixed, paraffin-embedded tissue after heat-induced antigen retrieval. Antibody LS-B3361 concentration 10 ug/ml.

**Requested From:**

Japan

Laboratory Reagent For In Vitro Research Use Only

Not for resale without prior written consent from LifeSpan BioSciences, Inc.

Created on 9/23/2014

© 2014 LifeSpan BioSciences