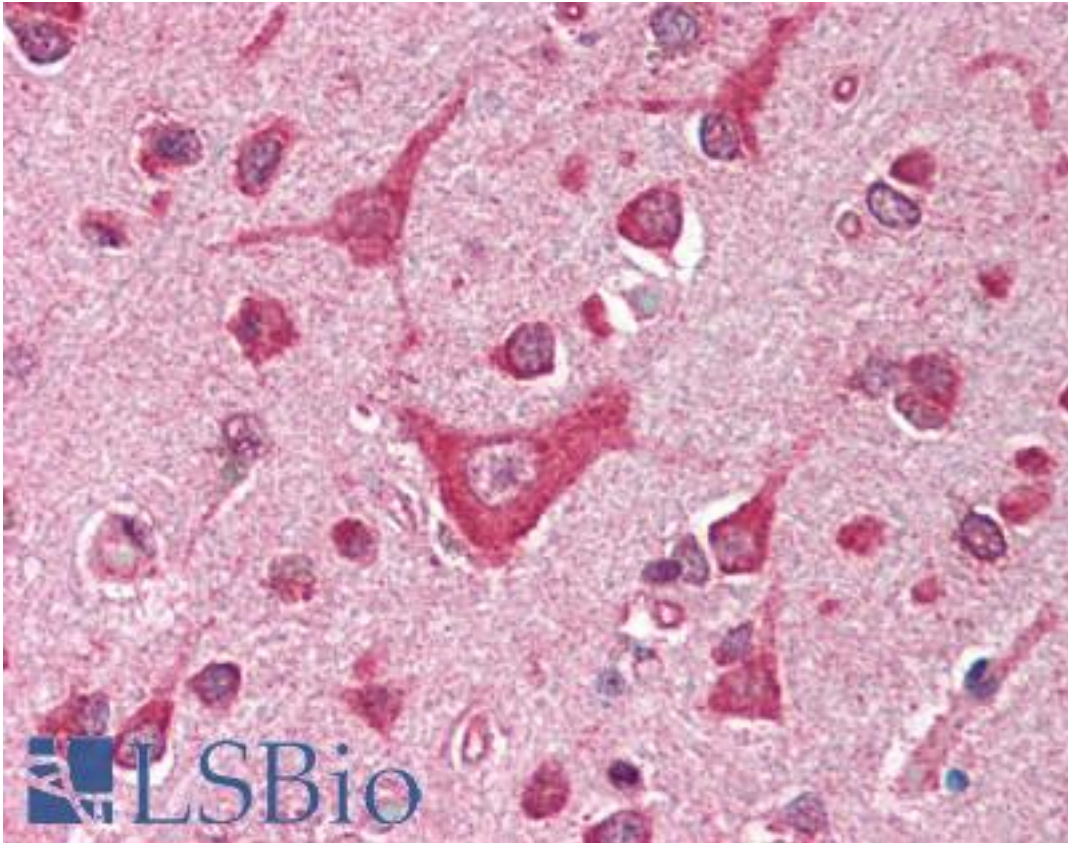


CAMK4 Rabbit anti-Human Polyclonal (aa305-323) Antibody - LS-B335 - LSBio

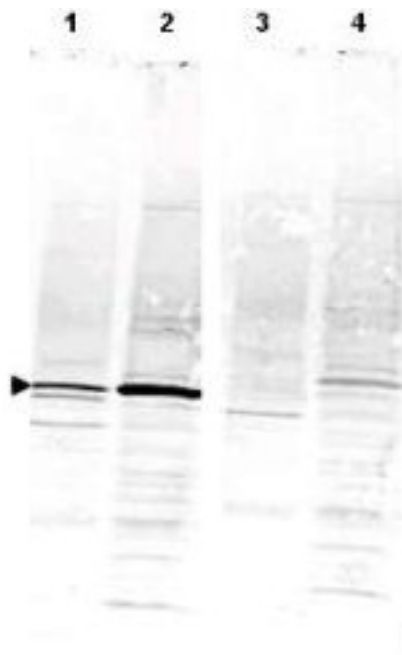
| | |
|-----------------------------|---|
| CatalogID: | LS-B335 |
| Validation: | This antibody replaces catalog number LS-C18758. It has been validated for use in the following assays: IHC. |
| Target: | calcium/calmodulin-dependent protein kinase IV (CAMK4) |
| Synonyms: | CAMK4 Antibody, CAM kinase IV Antibody, CaMK IV Antibody, CaMK-GR Antibody, CAMKIV Antibody, CaMK Antibody, CAM kinase- GR Antibody, CaM kinase-GR Antibody, CaM-KIV Antibody |
| Family / Subfamily: | Protein Kinase / CAMK1 |
| Host | CAMK4 antibody was produced in Rabbit |
| Clonality: | Polyclonal |
| Immunogen Species: | CAMK4 antibody was raised against Human |
| Antigen Type: | Synthetic peptide |
| Immunogen: | CAMK4 antibody was raised against synthetic peptide from human CAMK4. |
| Specificity: | Amino acids 305-323 of Human CaM Kinase IV protein. |
| Epitope: | aa305-323 |
| Reactivity: | Human, Chimpanzee, Mouse, Rat, Bovine, Dog |
| Purification: | Delipidated and defibrinated |
| Presentation: | PBS, pH 7.2, 0.01% sodium azide. |
| Recommended Storage: | +4°C or -20°C, Avoid repeated freezing and thawing. |
| Usage Summary: | Immunohistochemistry: LS-B335 was validated for use in immunohistochemistry on a panel of 21 formalin-fixed, paraffin-embedded (FFPE) human tissues after heat induced antigen retrieval in pH 6.0 citrate buffer. After incubation with the primary antibody, slides were incubated with biotinylated secondary antibody, followed by alkaline phosphatase-streptavidin and chromogen. The stained slides were evaluated by a pathologist to confirm staining specificity. The optimal working concentration for LS-B335 was determined to be 1:500. |
| Uses: | IHC - Paraffin (1:500), Immunofluorescence, Western blot (1:500 - 1:2000), ELISA (1:5000 - 1:25000) (Optimal dilution to be determined by the researcher) |
| Size: | 50 µl |
| Concentration: | 70 mg/ml |

Immunohistochemistry Image:



Anti-CAMK4 antibody IHC of human brain, cortex. Immunohistochemistry of formalin-fixed, paraffin-embedded tissue after heat-induced antigen retrieval. Antibody LS-B335 dilution 1:500.

Western Blot Image:



Anti-CaM Kinase IV Antibody - Western Blot. Western blot of Anti-CaM Kinase IV antibody shows detection of a band ~52 kD corresponding to CaM Kinase IV (arrowhead) in various preparations: lane 1 - rat brain lysate, lane 2 - Jurkat cell lysate. Specific reactivity is blocked in both lysates when antibody is preincubated with immunizing peptide (lanes 3 and 4 respectively). Approximately 35 ug of each lysate was separated by 4-20% SDS-PAGE and transferred onto nitrocellulose. CaM Kinase IV was similarly detected on lysates from mouse brain (not shown). After blocking the membrane was probed with the primary antibody diluted to 1:1000 for 2h at room temperature followed by washes and reaction with a 1:10000 dilution of IRDye800 conjugated Gt-a-Rabbit IgG [H&L] MX (for 45 min at room temperature. IRDye800 fluorescence image was captured using the Odyssey Infrared Imaging System developed by LI-COR. IRDye is a trademark of LI-COR, Inc.

Western Blot Image:



Western blot of anti-CaM Kinase IV antibody shows detection of a band ~52 kDa corresponding to CaM Kinase IV (arrowhead) in various preparations. Staining of rat brain lysate is shown in lane 1. Jurkat cell lysate staining is shown in lane 2.

Western Blot Image:



Specific reactivity is blocked in both lysates when antibody is preincubated with immunizing peptide (lanes 1 and 2 respectively).

Requested From:

Japan

Laboratory Reagent For In Vitro Research Use Only

Not for resale without prior written consent from LifeSpan BioSciences, Inc.

Created on 9/23/2014

© 2014 LifeSpan BioSciences