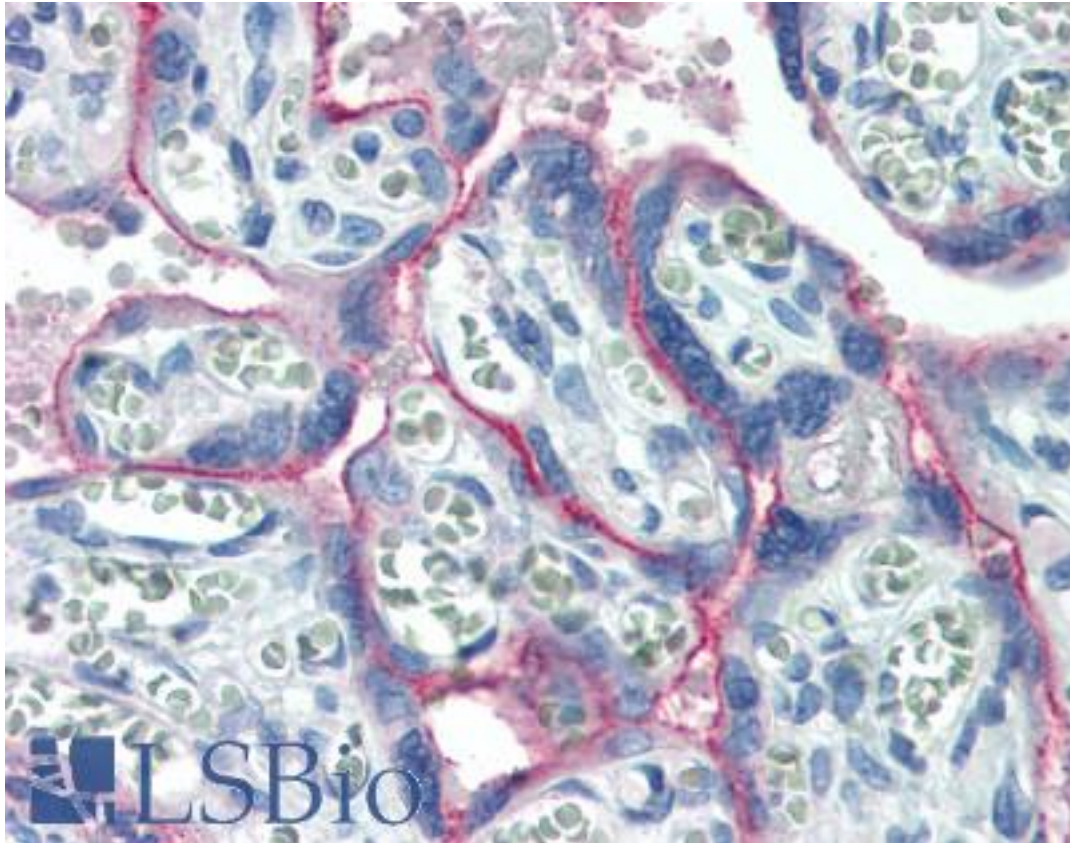


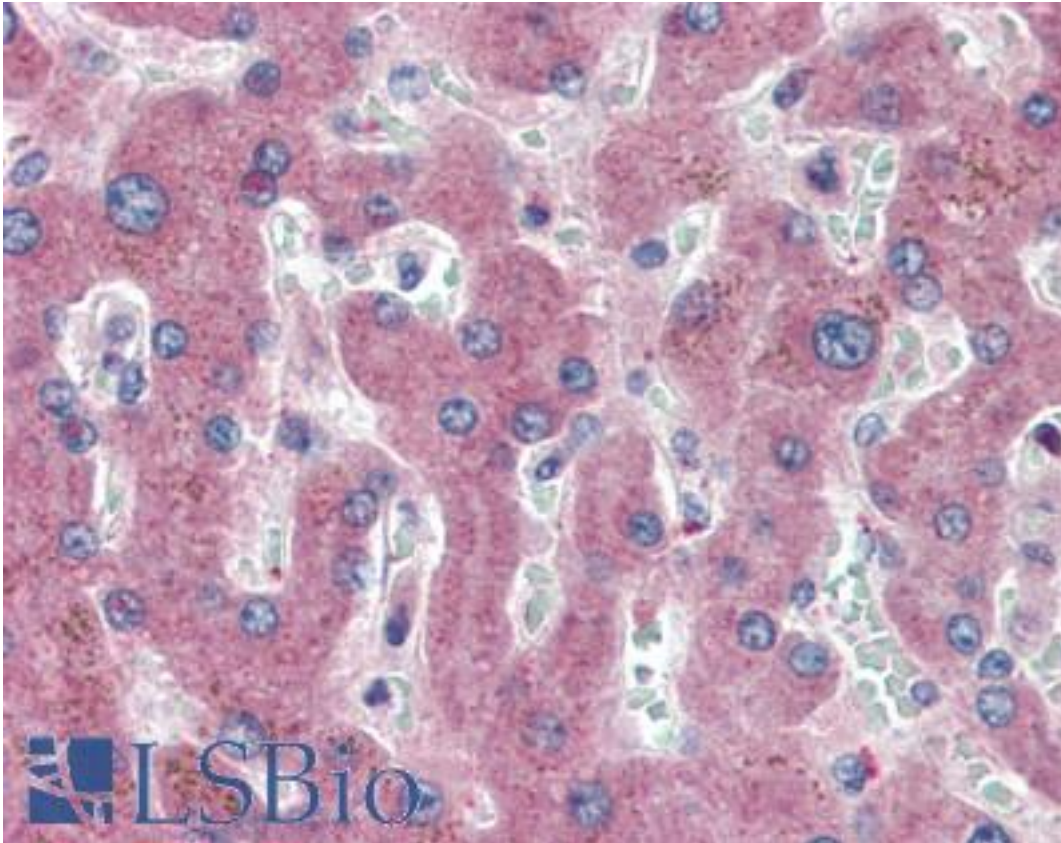
c-Met Rabbit anti-Human Polyclonal (C-Terminus) Antibody - LS-B3345 - LSBio	
CatalogID:	LS-B3345
Validation:	This antibody replaces catalog number LS-C50279. It has been validated for use in the following assays: IHC-P.
Target:	met proto-oncogene
Synonyms:	MET Antibody, AUTS9 Antibody, C-Met Antibody, HGF/SF receptor Antibody, HGFR Antibody, Met kinase Antibody, Proto-oncogene c-Met Antibody, Scatter factor receptor Antibody, SF receptor Antibody, HGF receptor Antibody, RCCP2 Antibody, Tyrosine-protein kinase Met Antibody
Family / Subfamily:	Protein Kinase / HGF Receptor/MET
Host	MET antibody was produced in Rabbit
Clonality:	Polyclonal
Immunogen Species:	c-Met antibody was raised against Human
Antigen Type:	Synthetic peptide
Immunogen:	c-Met antibody was raised against a synthetic peptide from C-terminus of human c-Met protein.
Epitope:	C-Terminus
Reactivity:	Human
Purification:	Immunoaffinity purified
Presentation:	10mM PBS/1% BSA buffer pH 7.4 with 0.1% sodium azide.
Recommended Storage:	Store at 2°C to 8°C degrees. Do not freeze.
Usage Summary:	Immunohistochemistry: LS-B3345 was validated for use in immunohistochemistry on a panel of 21 formalin-fixed, paraffin-embedded (FFPE) human tissues after heat induced antigen retrieval in pH 6.0 citrate buffer. After incubation with the primary antibody, slides were incubated with biotinylated secondary antibody, followed by alkaline phosphatase-streptavidin and chromogen. The stained slides were evaluated by a pathologist to confirm staining specificity. The optimal working concentration for LS-B3345 was determined to be 15 ug/ml.
Uses:	IHC - Paraffin (15 µg/ml) (Optimal dilution to be determined by the researcher)
Size:	250 µl
Concentration:	0.2 mg/ml

Immunohistochemistry Image:



Anti-c-Met antibody IHC of human placenta. Immunohistochemistry of formalin-fixed, paraffin-embedded tissue after heat-induced antigen retrieval. Antibody LS-B3345 concentration 15 ug/ml.

Immunohistochemistry Image:



Anti-c-Met antibody IHC of human liver. Immunohistochemistry of formalin-fixed, paraffin-embedded tissue after heat-induced antigen retrieval. Antibody LS-B3345 concentration 15 ug/ml.

Requested From:

Japan

Laboratory Reagent For In Vitro Research Use Only

Not for resale without prior written consent from LifeSpan BioSciences, Inc.

Created on 9/23/2014

© 2014 LifeSpan BioSciences