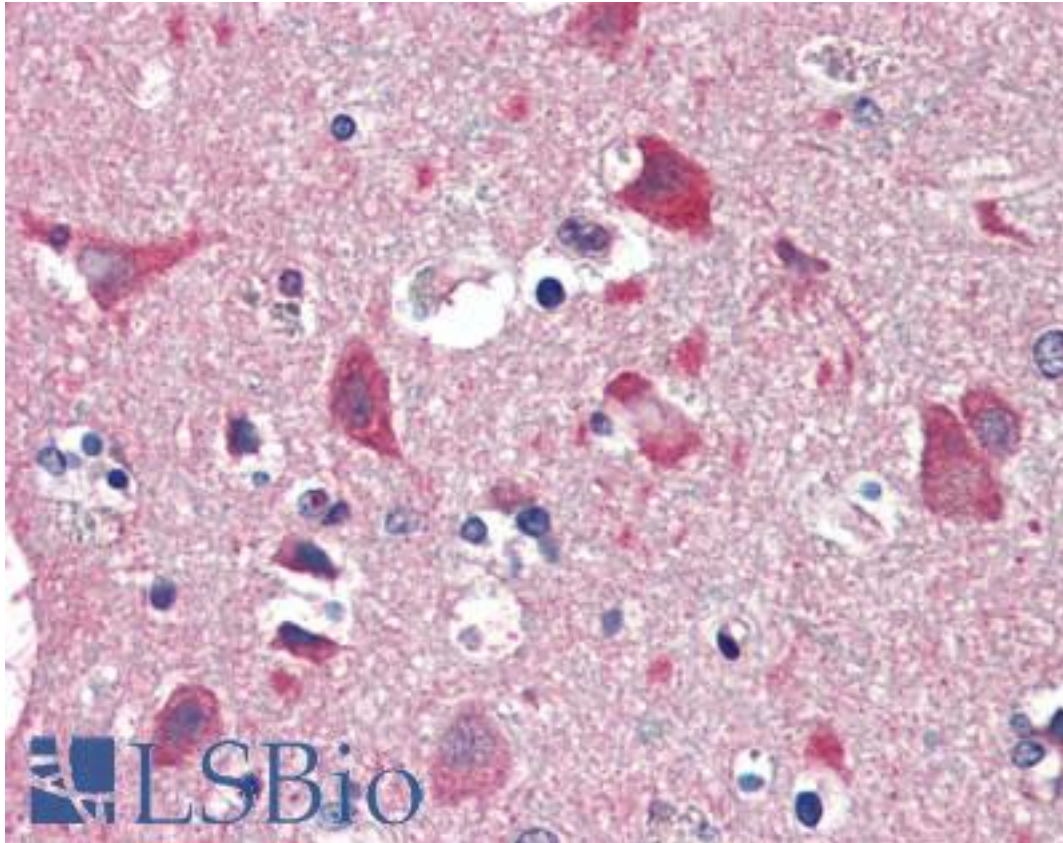


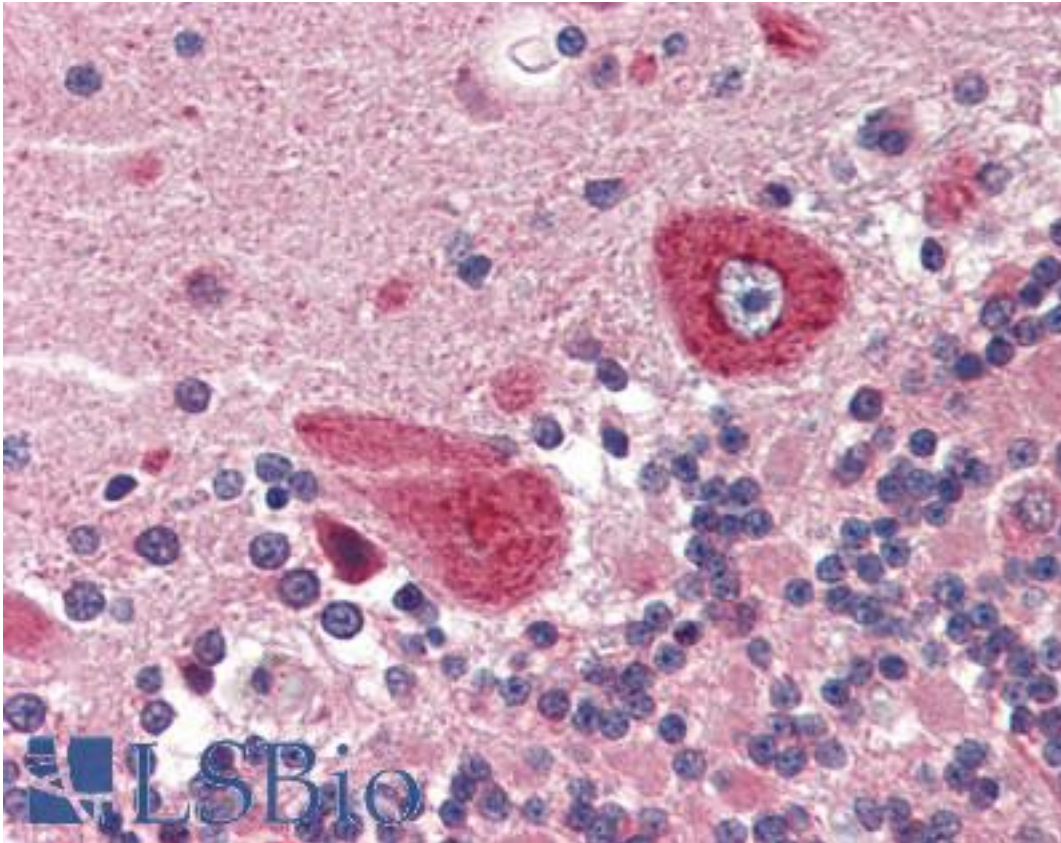
GUCY1B3 Rabbit anti-Human Polyclonal (aa189-207) Antibody - LS-B3342 - LSBio	
<b>CatalogID:</b>	LS-B3342
<b>Validation:</b>	This antibody replaces catalog number LS-C50246. It has been validated for use in the following assays: IHC-P.
<b>Target:</b>	guanylate cyclase 1, soluble, beta 3 (GUCY1B3)
<b>Synonyms:</b>	GUCY1B3 Antibody, GC-S-beta-1 Antibody, GC-SB3 Antibody, GCS-beta-1 Antibody, GUC1B3 Antibody, GUCB3 Antibody, GUCSB3 Antibody, GUCY1B1 Antibody, GCS-beta-3 Antibody
<b>Family / Subfamily:</b>	Guanyl cyclase / not assigned-Guanyl cyclase
<b>Host</b>	GUCY1B3 antibody was produced in Rabbit
<b>Clonality:</b>	Polyclonal
<b>Immunogen Species:</b>	GUCY1B3 antibody was raised against Human
<b>Antigen Type:</b>	Synthetic peptide
<b>Immunogen:</b>	GUCY1B3 antibody was raised against a synthetic peptide from aa 189-207 of human guanylyl cyclase beta 1, soluble.
<b>Epitope:</b>	aa189-207
<b>Reactivity:</b>	Human, Mouse, Rat
<b>Purification:</b>	Immunoaffinity purified
<b>Presentation:</b>	10 mM PBS, pH 7.4, 1% BSA, 0.09% sodium azide
<b>Recommended Storage:</b>	Store at 2°C to 8°C degrees. Do not freeze.
<b>Usage Summary:</b>	Immunohistochemistry: LS-B3342 was validated for use in immunohistochemistry on a panel of 21 formalin-fixed, paraffin-embedded (FFPE) human tissues after heat induced antigen retrieval in pH 6.0 citrate buffer. After incubation with the primary antibody, slides were incubated with biotinylated secondary antibody, followed by alkaline phosphatase-streptavidin and chromogen. The stained slides were evaluated by a pathologist to confirm staining specificity. The optimal working concentration for LS-B3342 was determined to be 10 ug/ml.
<b>Uses:</b>	IHC - Paraffin (10 µg/ml) (Optimal dilution to be determined by the researcher)
<b>Size:</b>	250 µl
<b>Concentration:</b>	0.2 mg/ml

**Immunohistochemistry Image:**



Anti-GUCY1B3 / Guanylyl Cyclase Beta 1 antibody IHC of human brain, cortex.  
Immunohistochemistry of formalin-fixed, paraffin-embedded tissue after heat-induced antigen retrieval. Antibody LS-B3342 concentration 10 ug/ml.

**Immunohistochemistry Image:**



Anti-GUCY1B3 / Guanylyl Cyclase Beta 1 antibody IHC of human brain, cerebellum.  
Immunohistochemistry of formalin-fixed, paraffin-embedded tissue after heat-induced antigen retrieval. Antibody LS-B3342 concentration 10 ug/ml.

**Requested From:**

Japan

Laboratory Reagent For In Vitro Research Use Only

Not for resale without prior written consent from LifeSpan BioSciences, Inc.

Created on 9/23/2014

© 2014 LifeSpan BioSciences