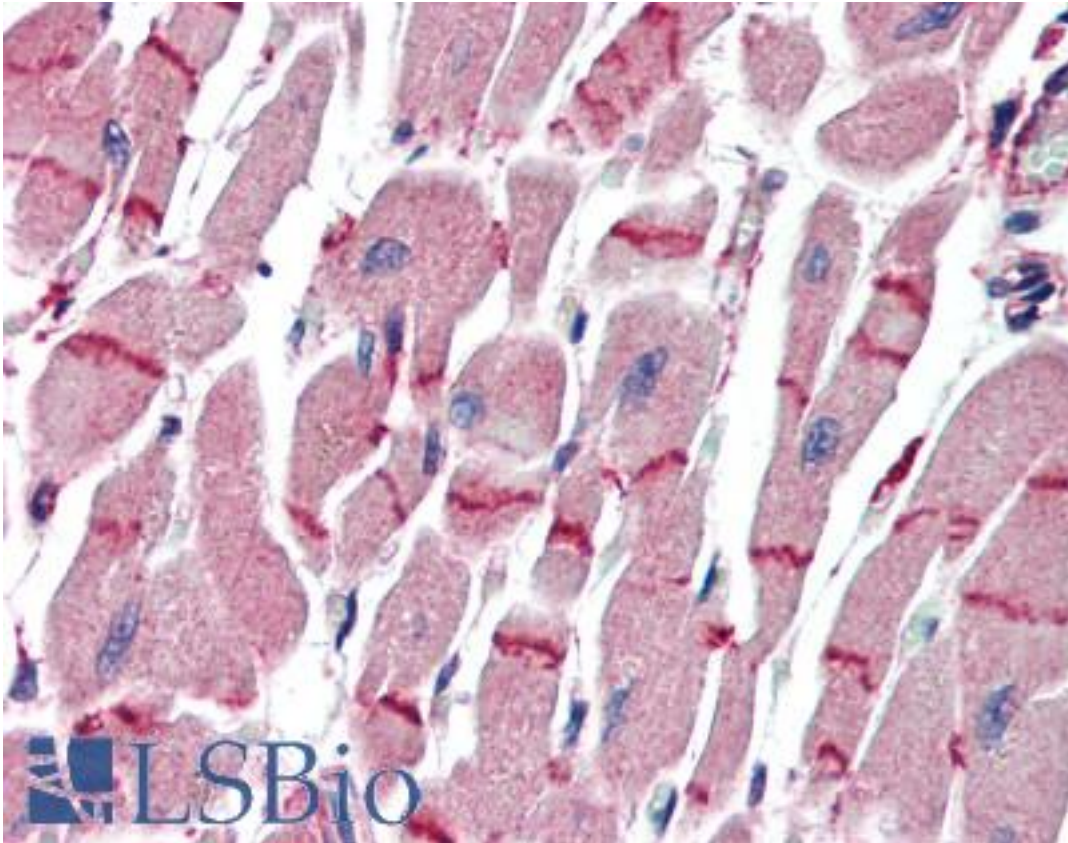


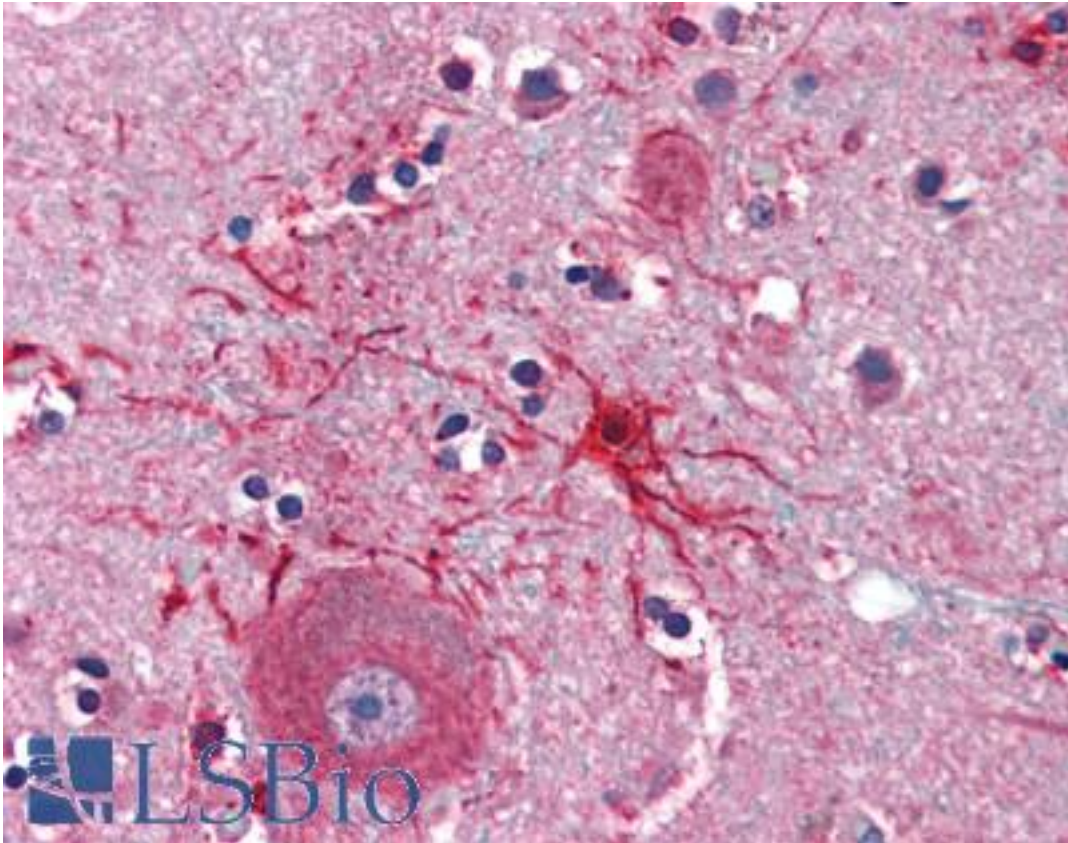
APAF1 / APAF-1 Rabbit anti-Human Polyclonal (C-Terminus) Antibody - LS-B3340 - LSBio	
<b>CatalogID:</b>	LS-B3340
<b>Validation:</b>	This antibody replaces catalog number LS-C50660. It has been validated for use in the following assays: IHC-P.
<b>Target:</b>	apoptotic peptidase activating factor 1 (APAF1)
<b>Synonyms:</b>	APAF1 Antibody, APAF-1 Antibody, CED4 Antibody, KIAA0413 Antibody
<b>Family / Subfamily:</b>	Apoptosis / Not assigned-Other
<b>Host</b>	APAF1 antibody was produced in Rabbit
<b>Clonality:</b>	Polyclonal
<b>Immunogen Species:</b>	APAF1 / APAF-1 antibody was raised against Human
<b>Antigen Type:</b>	Synthetic peptide
<b>Immunogen:</b>	APAF1 / APAF-1 antibody was raised against a synthetic peptide derived from the C-terminus of human Apaf-1.
<b>Epitope:</b>	C-Terminus
<b>Reactivity:</b>	Human, Mouse, Rat
<b>Purification:</b>	Immunoaffinity purified
<b>Presentation:</b>	10 mM PBS, pH 7.4, BSA, sodium azide.
<b>Recommended Storage:</b>	Store at 2°C to 8°C degrees. Do not freeze.
<b>Usage Summary:</b>	Immunohistochemistry: LS-B3340 was validated for use in immunohistochemistry on a panel of 21 formalin-fixed, paraffin-embedded (FFPE) human tissues after heat induced antigen retrieval in pH 6.0 citrate buffer. After incubation with the primary antibody, slides were incubated with biotinylated secondary antibody, followed by alkaline phosphatase-streptavidin and chromogen. The stained slides were evaluated by a pathologist to confirm staining specificity. The optimal working concentration for LS-B3340 was determined to be 10 ug/ml.
<b>Uses:</b>	IHC - Paraffin (10 µg/ml) (Optimal dilution to be determined by the researcher)
<b>Size:</b>	250 µl
<b>Concentration:</b>	0.2 mg/ml

**Immunohistochemistry Image:**



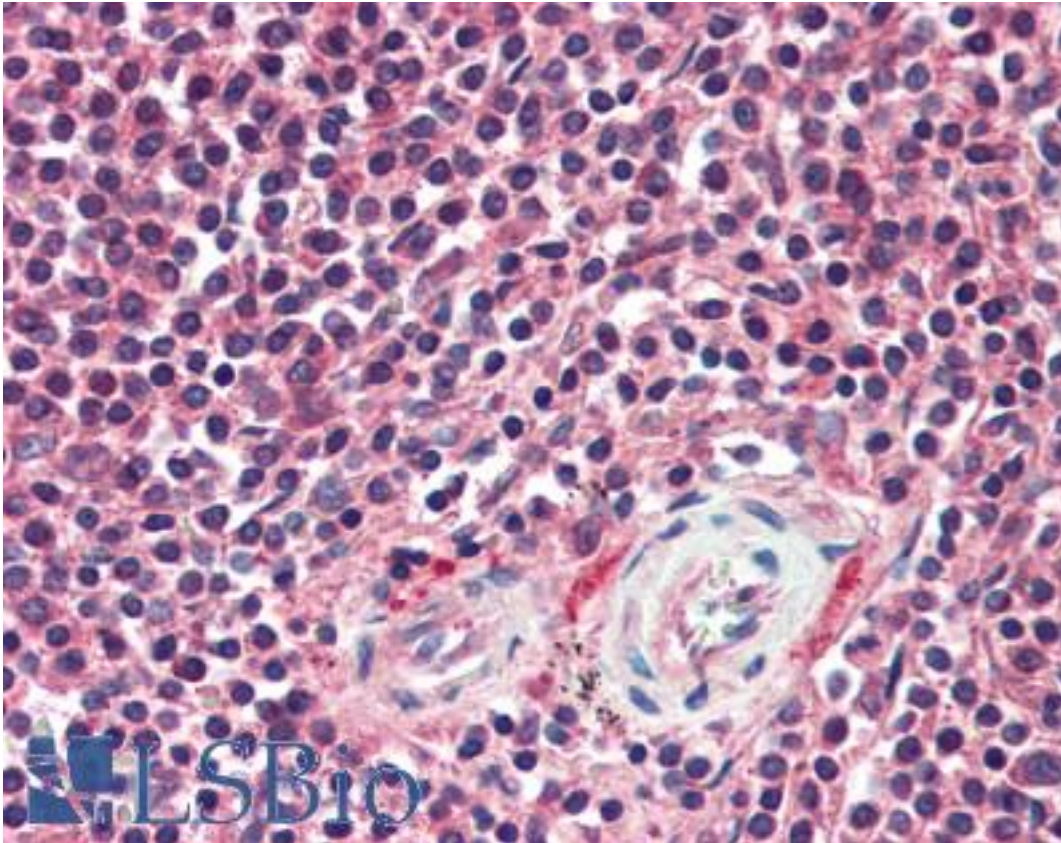
Anti-APAF1 / APAF-1 antibody IHC of human heart. Immunohistochemistry of formalin-fixed, paraffin-embedded tissue after heat-induced antigen retrieval. Antibody LS-B3340 concentration 10 ug/ml.

**Immunohistochemistry Image:**



Anti-APAF1 / APAF-1 antibody IHC of human brain, cortex. Immunohistochemistry of formalin-fixed, paraffin-embedded tissue after heat-induced antigen retrieval. Antibody LS-B3340 concentration 10 ug/ml.

**Immunohistochemistry Image:**



Anti-APAF1 / APAF-1 antibody IHC of human spleen. Immunohistochemistry of formalin-fixed, paraffin-embedded tissue after heat-induced antigen retrieval. Antibody LS-B3340 concentration 10 ug/ml.

**Requested From:**

Japan

Laboratory Reagent For In Vitro Research Use Only

Not for resale without prior written consent from LifeSpan BioSciences, Inc.

Created on 9/23/2014

© 2014 LifeSpan BioSciences