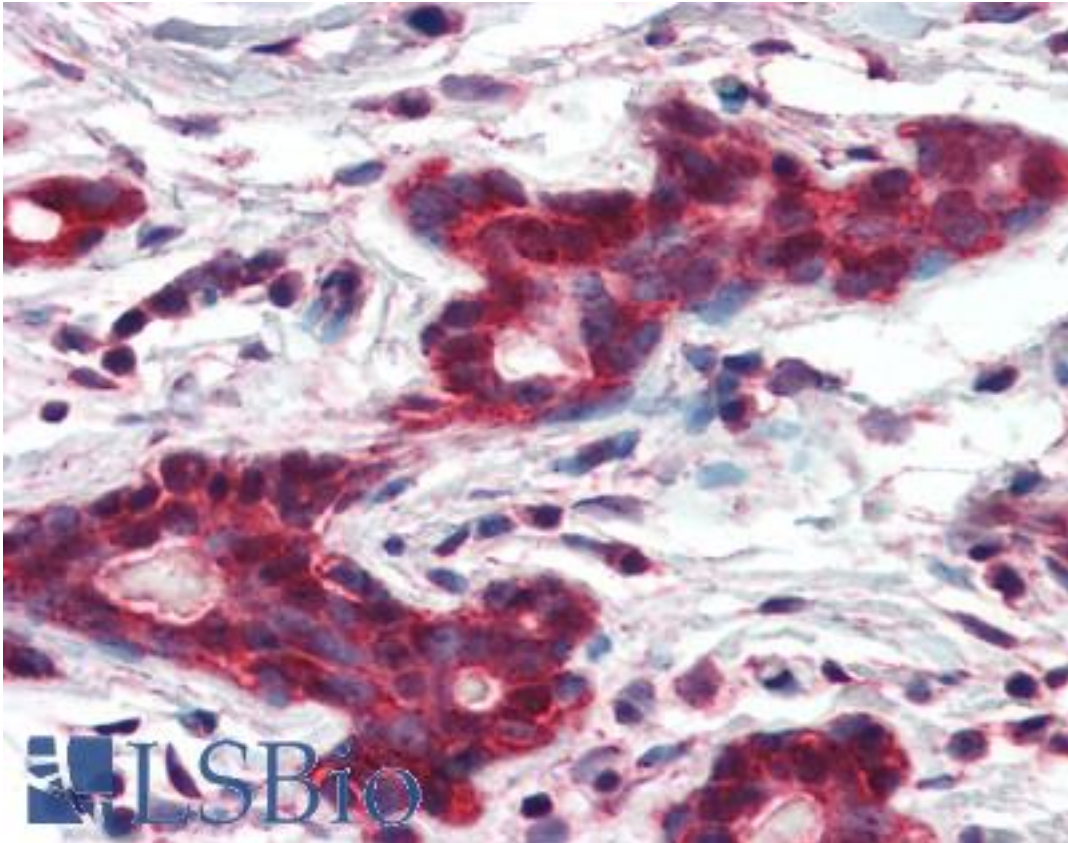


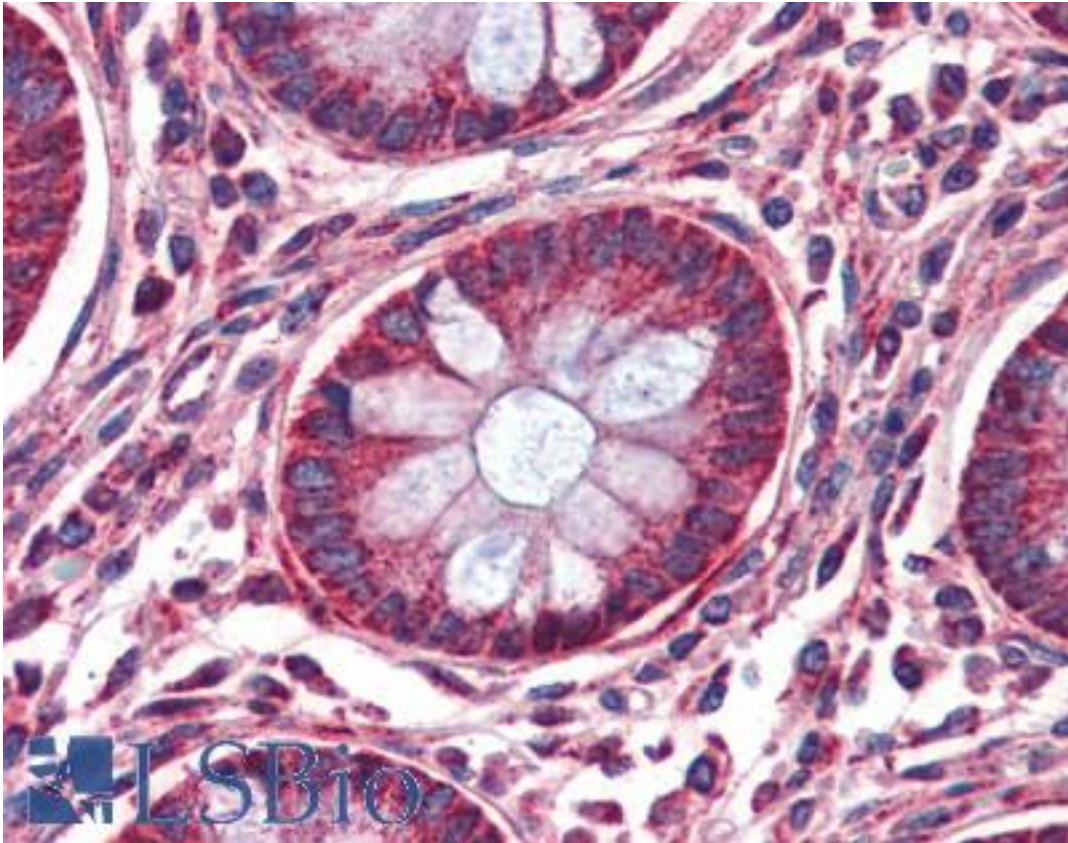
MMP14 / MMP-14 Rabbit anti-Human Polyclonal (aa160-173) Antibody - LS-B3338 - LSBio	
CatalogID:	LS-B3338
Validation:	This antibody replaces catalog number LS-C50651. It has been validated for use in the following assays: IHC-P.
Target:	matrix metalloproteinase 14 (membrane-inserted) (MMP14)
Synonyms:	MMP14 Antibody, Membrane type-1 MMP Antibody, MT1-MMP Antibody, MT1MMP Antibody, MT-MMP Antibody, MT-MMP 1 Antibody, Matrix metalloproteinase-14 Antibody, MMP-14 Antibody, MMP-X1 Antibody, MTMMP1 Antibody
Family / Subfamily:	Protease / Metalloproteinase M10A
Host	MMP14 antibody was produced in Rabbit
Clonality:	Polyclonal
Immunogen Species:	MMP14 / MMP-14 antibody was raised against Human
Antigen Type:	Synthetic peptide
Immunogen:	MMP14 / MMP-14 antibody was raised against a synthetic peptide derived from aa 160-173 of human MMP-14 protein.
Epitope:	aa160-173
Reactivity:	Human
Purification:	Immunoaffinity purified
Presentation:	10 mM PBS, pH 7.4, BSA, sodium azide.
Recommended Storage:	Store at 2°C to 8°C degrees. Do not freeze.
Usage Summary:	Immunohistochemistry: LS-B3338 was validated for use in immunohistochemistry on a panel of 21 formalin-fixed, paraffin-embedded (FFPE) human tissues after heat induced antigen retrieval in pH 6.0 citrate buffer. After incubation with the primary antibody, slides were incubated with biotinylated secondary antibody, followed by alkaline phosphatase-streptavidin and chromogen. The stained slides were evaluated by a pathologist to confirm staining specificity. The optimal working concentration for LS-B3338 was determined to be 10 ug/ml.
Uses:	IHC - Paraffin (10 µg/ml) (Optimal dilution to be determined by the researcher)
Size:	250 µl
Concentration:	0.2 mg/ml

Immunohistochemistry Image:



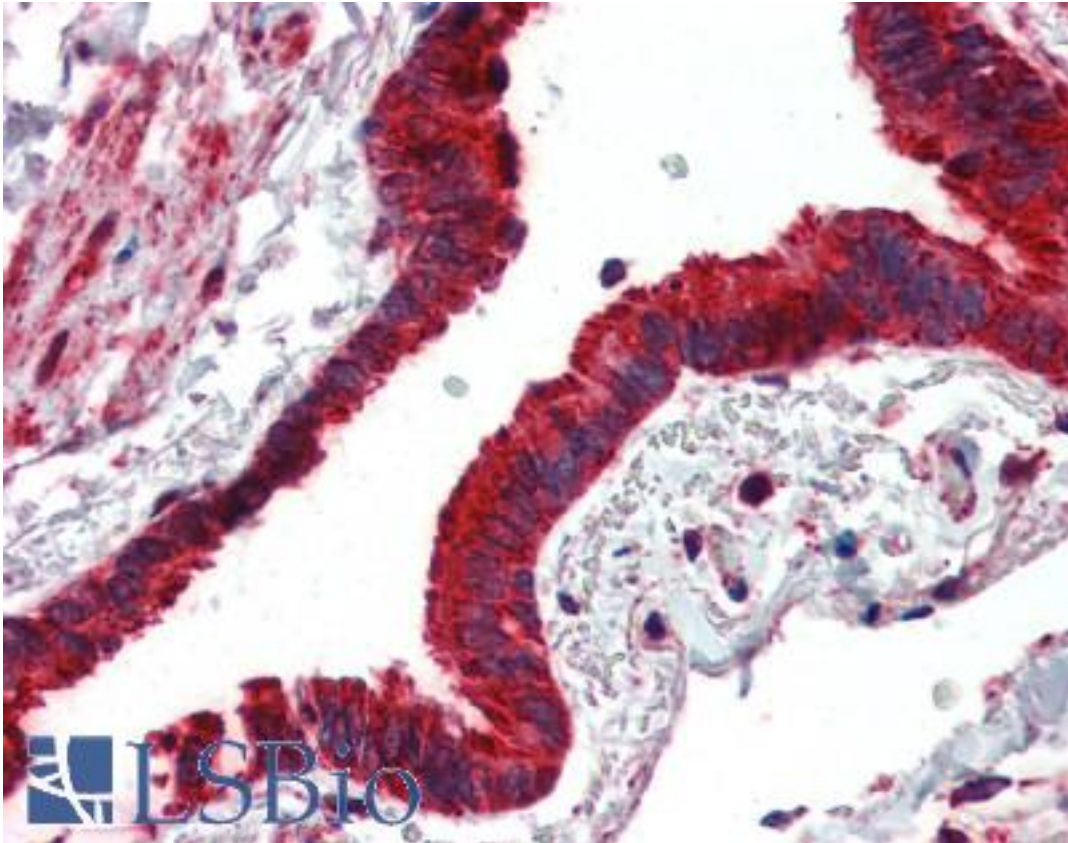
Anti-MMP14 antibody IHC of human breast. Immunohistochemistry of formalin-fixed, paraffin-embedded tissue after heat-induced antigen retrieval. Antibody LS-B3338 concentration 10 ug/ml.

Immunohistochemistry Image:



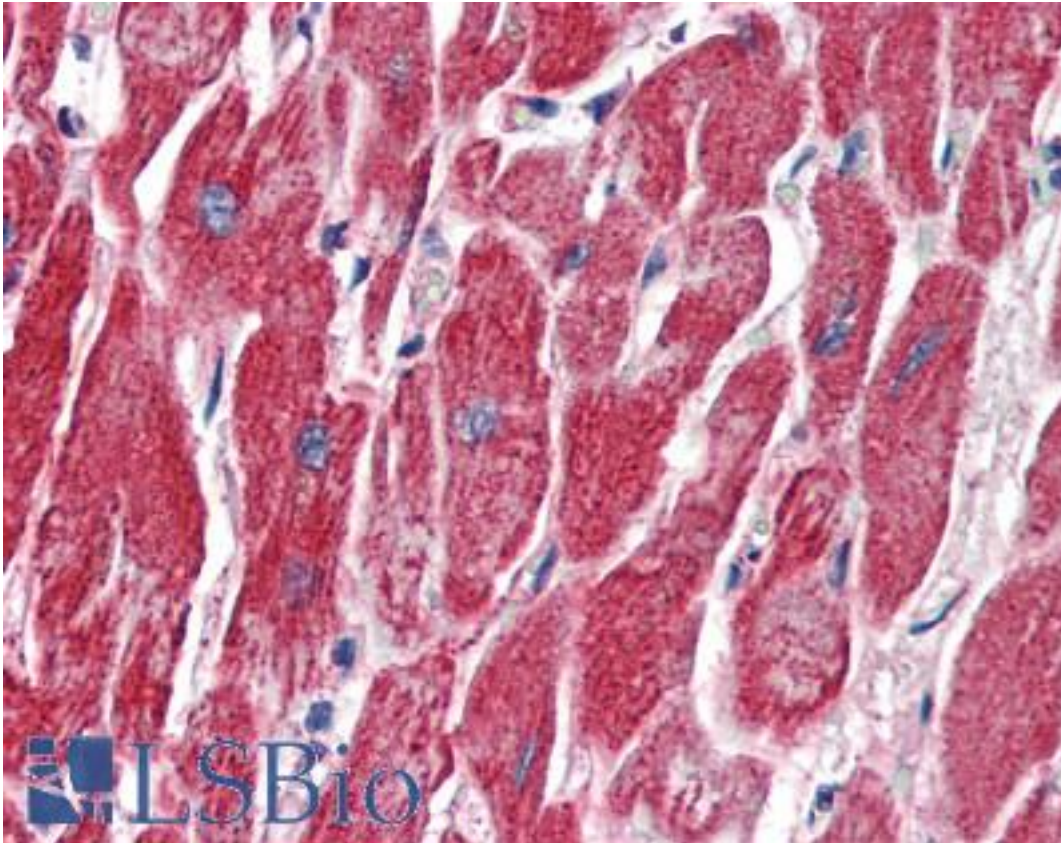
Anti-MMP14 antibody IHC of human colon. Immunohistochemistry of formalin-fixed, paraffin-embedded tissue after heat-induced antigen retrieval. Antibody LS-B3338 concentration 10 ug/ml.

Immunohistochemistry Image:



Anti-MMP14 antibody IHC of human lung, respiratory epithelium. Immunohistochemistry of formalin-fixed, paraffin-embedded tissue after heat-induced antigen retrieval. Antibody LS-B3338 concentration 10 ug/ml.

Immunohistochemistry Image:



Anti-MMP14 antibody IHC of human heart. Immunohistochemistry of formalin-fixed, paraffin-embedded tissue after heat-induced antigen retrieval. Antibody LS-B3338 concentration 10 ug/ml.

Requested From:

Japan

Laboratory Reagent For In Vitro Research Use Only

Not for resale without prior written consent from LifeSpan BioSciences, Inc.

Created on 9/23/2014

© 2014 LifeSpan BioSciences