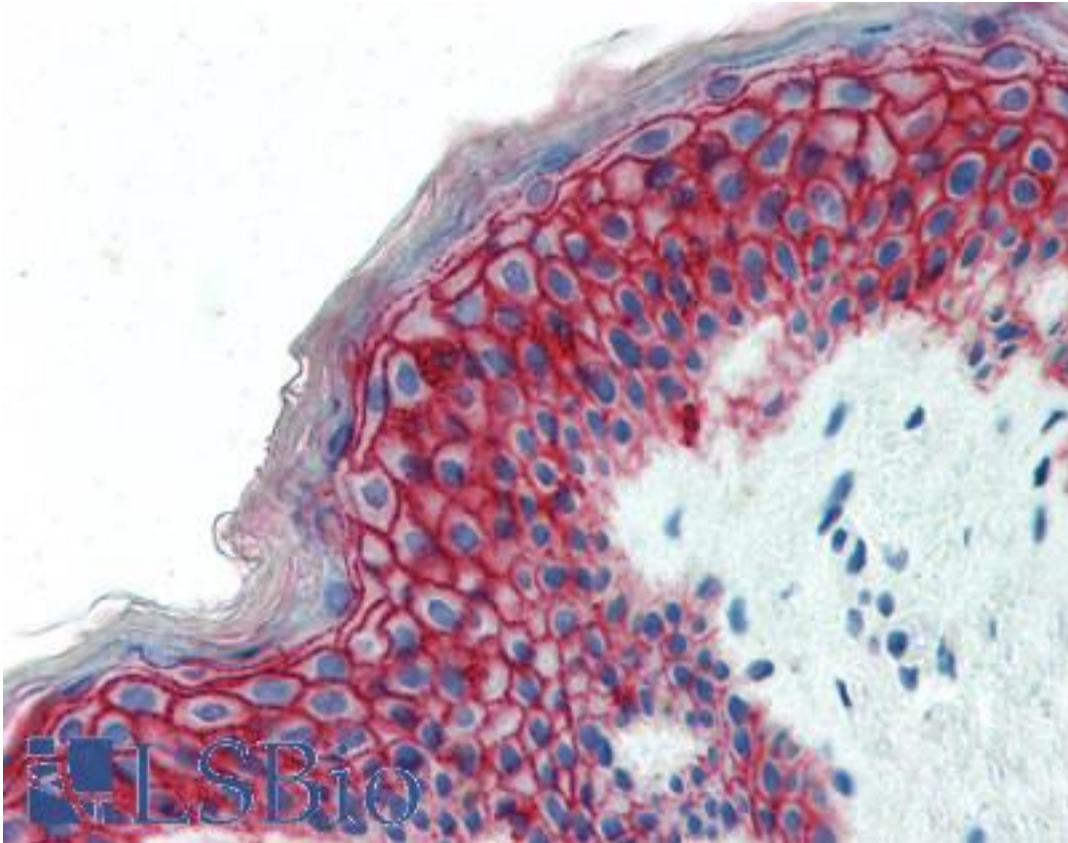


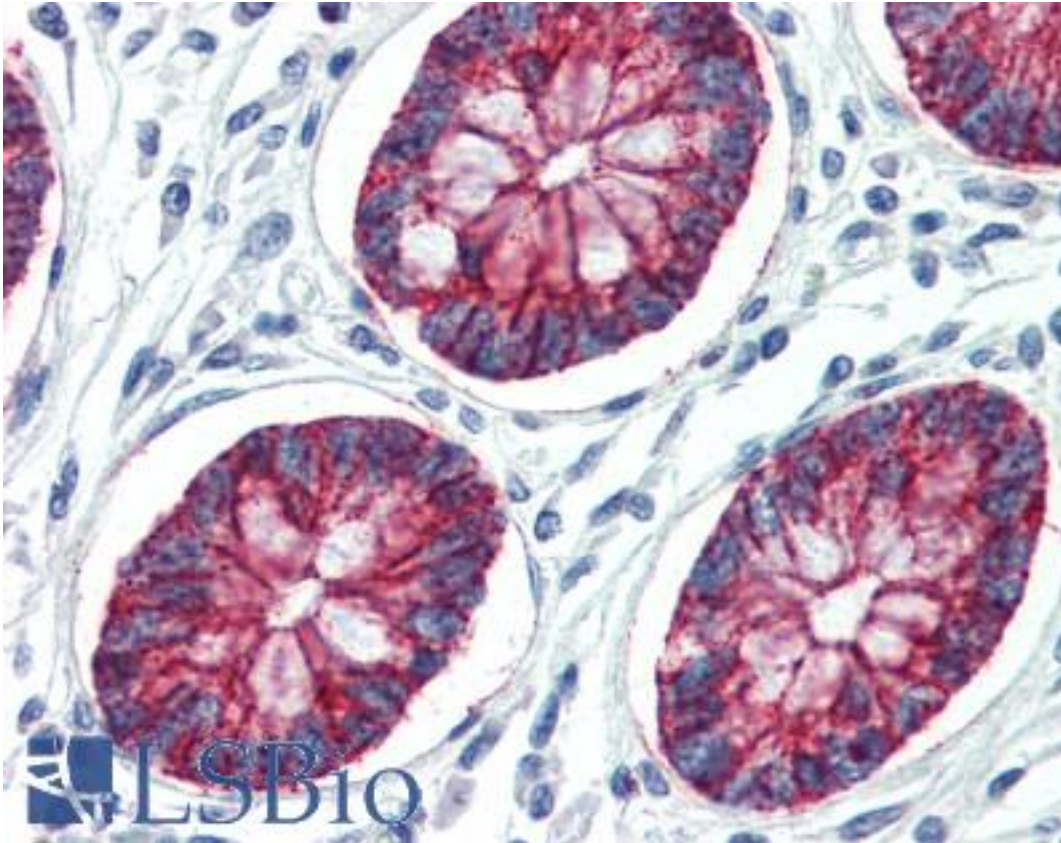
CLDN1 / Claudin 1 Rabbit anti-Human Polyclonal (C-Terminus) Antibody - LS-B3334 - LSBio	
CatalogID:	LS-B3334
Validation:	This antibody replaces catalog number LS-C50607. It has been validated for use in the following assays: IHC-P.
Target:	claudin 1 (CLDN1)
Synonyms:	CLDN1 Antibody, Claudin-1 Antibody, Claudin 1 Antibody, ILVASC Antibody, SEMP1 Antibody, CLD1 Antibody
Family / Subfamily:	Claudin / not assigned-Claudin
Host	CLDN1 antibody was produced in Rabbit
Clonality:	Polyclonal
Immunogen Species:	CLDN1 / Claudin 1 antibody was raised against Human
Antigen Type:	Synthetic peptide
Immunogen:	CLDN1 / Claudin 1 antibody was raised against a synthetic peptide derived from the C-terminus of human Claudin-1.
Epitope:	C-Terminus
Reactivity:	Human, Monkey, Mouse, Rat, Dog
Purification:	Immunoaffinity purified
Presentation:	PBS, pH 7.6, 1% BSA, less than 0.1% sodium azide
Recommended Storage:	Store at 2°C to 8°C degrees. Do not freeze.
Usage Summary:	Immunohistochemistry: LS-B3334 was validated for use in immunohistochemistry on a panel of 21 formalin-fixed, paraffin-embedded (FFPE) human tissues after heat induced antigen retrieval in pH 6.0 citrate buffer. After incubation with the primary antibody, slides were incubated with biotinylated secondary antibody, followed by alkaline phosphatase-streptavidin and chromogen. The stained slides were evaluated by a pathologist to confirm staining specificity. The optimal working concentration for LS-B3334 was determined to be 10 ug/ml.
Uses:	IHC - Paraffin (10 µg/ml) (Optimal dilution to be determined by the researcher)
Size:	250 µl
Concentration:	0.2 mg/ml

Immunohistochemistry Image:



Anti-CLDN1 / Claudin 1 antibody IHC of human skin. Immunohistochemistry of formalin-fixed, paraffin-embedded tissue after heat-induced antigen retrieval. Antibody LS-B3334 concentration 10 ug/ml.

Immunohistochemistry Image:



Anti-CLDN1 / Claudin 1 antibody IHC of human colon. Immunohistochemistry of formalin-fixed, paraffin-embedded tissue after heat-induced antigen retrieval. Antibody LS-B3334 concentration 10 ug/ml.

Requested From:

Japan

Laboratory Reagent For In Vitro Research Use Only

Not for resale without prior written consent from LifeSpan BioSciences, Inc.

Created on 9/23/2014

© 2014 LifeSpan BioSciences