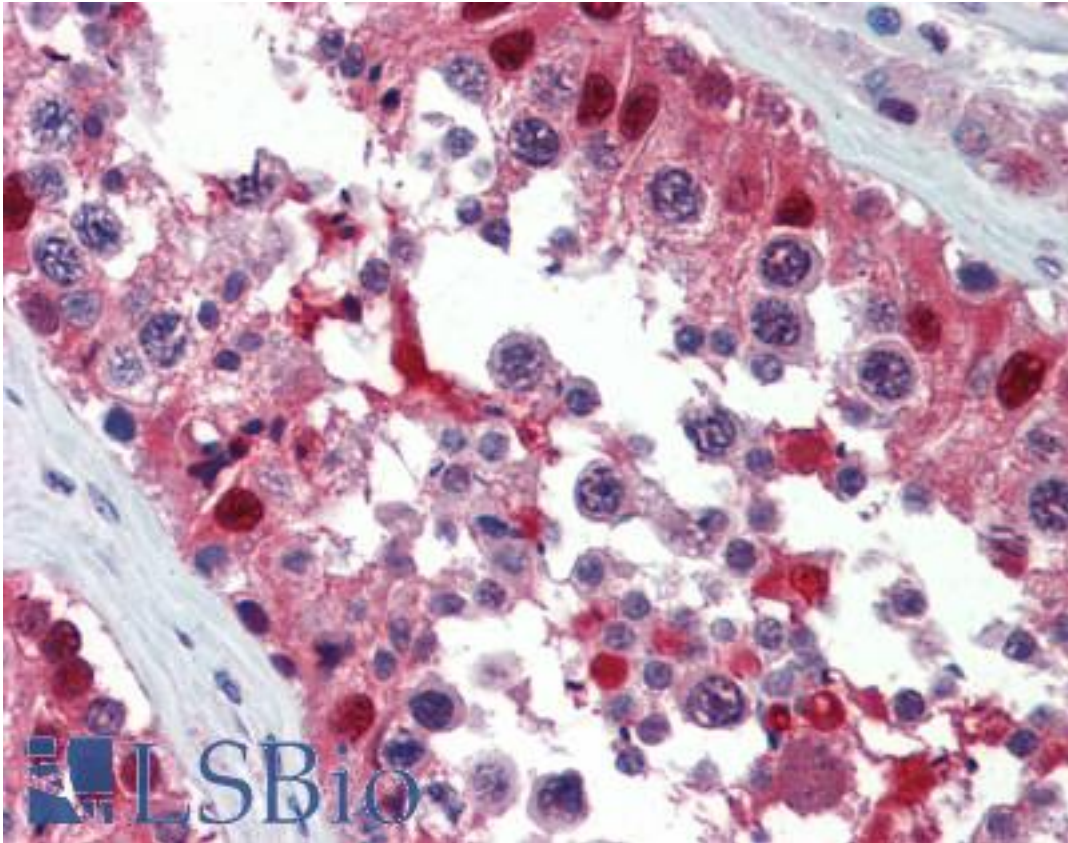


Ubiquitin Mouse anti-Bovine Monoclonal Antibody - LS-B3328 - LSBio

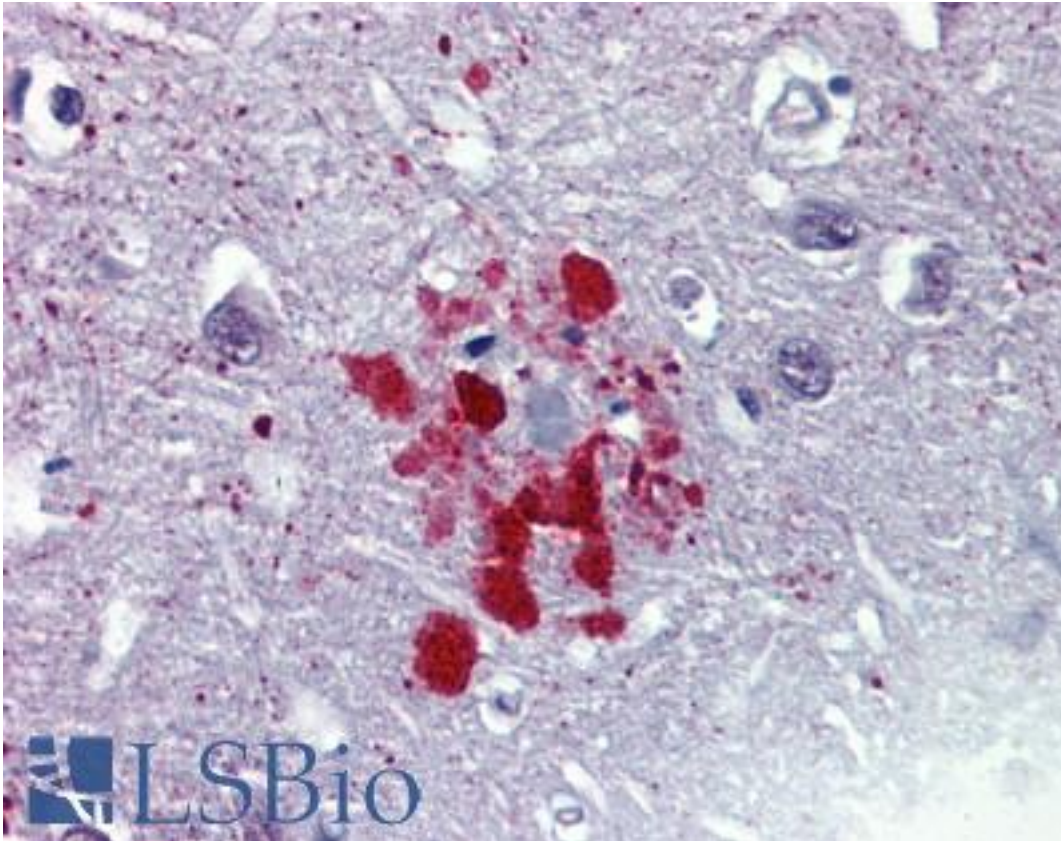
CatalogID:	LS-B3328
Validation:	This antibody replaces catalog number LS-C76676. It has been validated for use in the following assays: IHC-P.
Target:	Ubiquitin
Host	Ubiquitin antibody was produced in Mouse
Clonality:	Monoclonal
Isotype:	IgG1,k
Immunogen Species:	Ubiquitin antibody was raised against Bovine
Antigen Type:	Purified protein
Immunogen:	Ubiquitin antibody was raised against purified bovine ubiquitin conjugated to carrier protein.
Specificity:	Recognizes bovine ubiquitin, both conjugated and unconjugated. Reacts with a single chain 8.5kD protein. The ubiquitin molecule appears to be present in all eukaryotic cells and has an identical primary structure in all animals. Species cross-reactivity: Human, chicken, mouse, C. elegans and Drosophila.
Reactivity:	Bovine, Human, Mouse
Purification:	Protein A purified
Presentation:	PBS, pH 7.4, 0.1% sodium azide
Recommended Storage:	Long term: Add glycerol (40-50%) -20°C; Short term: +4°C
Usage Summary:	Immunohistochemistry: LS-B3328 was validated for use in immunohistochemistry on a panel of 21 formalin-fixed, paraffin-embedded (FFPE) human tissues after heat induced antigen retrieval in pH 6.0 citrate buffer. After incubation with the primary antibody, slides were incubated with biotinylated secondary antibody, followed by alkaline phosphatase-streptavidin and chromogen. The stained slides were evaluated by a pathologist to confirm staining specificity. The optimal working concentration for LS-B3328 was determined to be 10 ug/ml. Western Blot: 1-3 ug/ml; Prepare lysis buffer in 10 mM N-ethylmaleimide to inhibit ubiquitin-conjugating enzymes. N-ethylmaleimide inactivates certain enzymes by blocking free sulfhydryls. After electrophoresis and transfer, pre-incubate transferred membranes in denaturing buffer (6M guanidine-HCl 20 mM Tris-HCl, pH 7.5, 5 mM b-mercaptoethanol, 1 mM PMSF) for 30-60 minutes at 4uC, followed by extensive PBS washing.
Uses:	IHC - Paraffin (10 µg/ml), IHC - Frozen, Immunofluorescence, Western blot, ELISA (0.1 - 1 µg/ml) (Optimal dilution to be determined by the researcher)
Size:	50 µg
Concentration:	0.5 mg/ml

Immunohistochemistry Image:



Anti-Ubiquitin antibody IHC of human testis. Immunohistochemistry of formalin-fixed, paraffin-embedded tissue after heat-induced antigen retrieval. Antibody LS-B3328 concentration 10 ug/ml.

Immunohistochemistry Image:



Anti-Ubiquitin antibody IHC of human brain, cortex, senile plaque. Immunohistochemistry of formalin-fixed, paraffin-embedded tissue after heat-induced antigen retrieval. Antibody LS-B3328 concentration 10 ug/ml.

Requested From:

Japan

Laboratory Reagent For In Vitro Research Use Only

Not for resale without prior written consent from LifeSpan BioSciences, Inc.

Created on 9/23/2014

© 2014 LifeSpan BioSciences