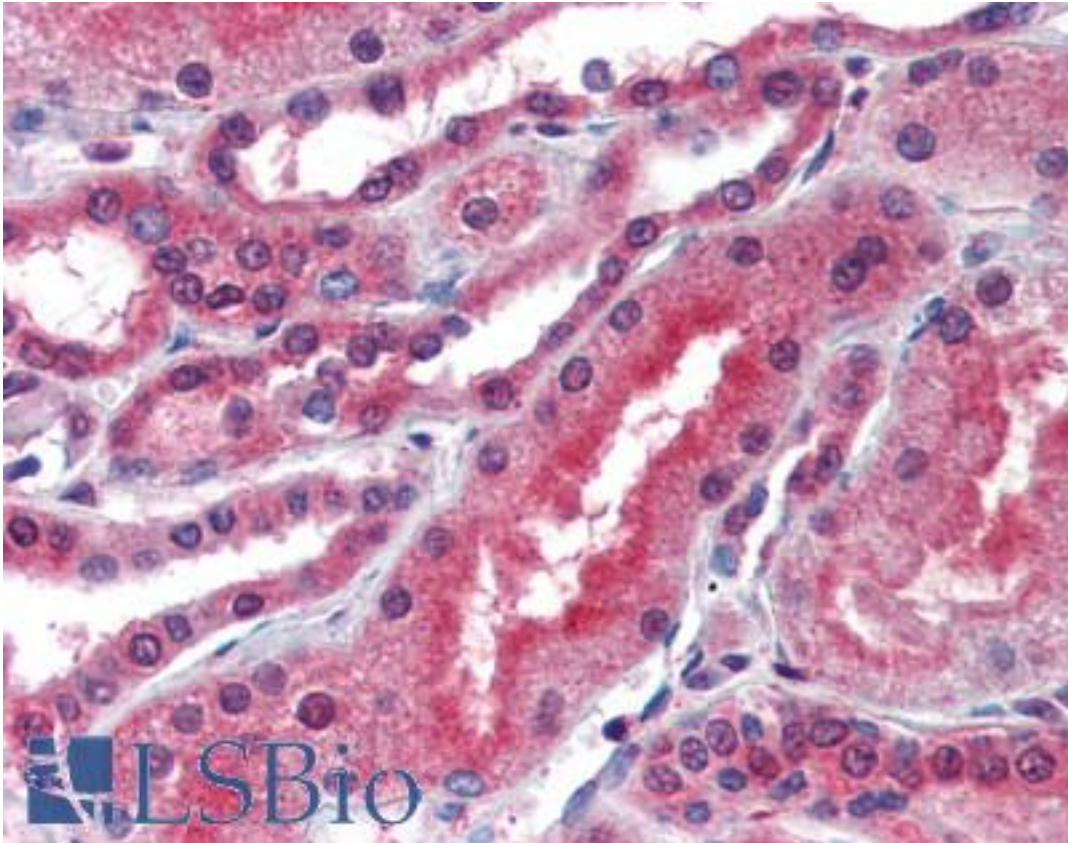


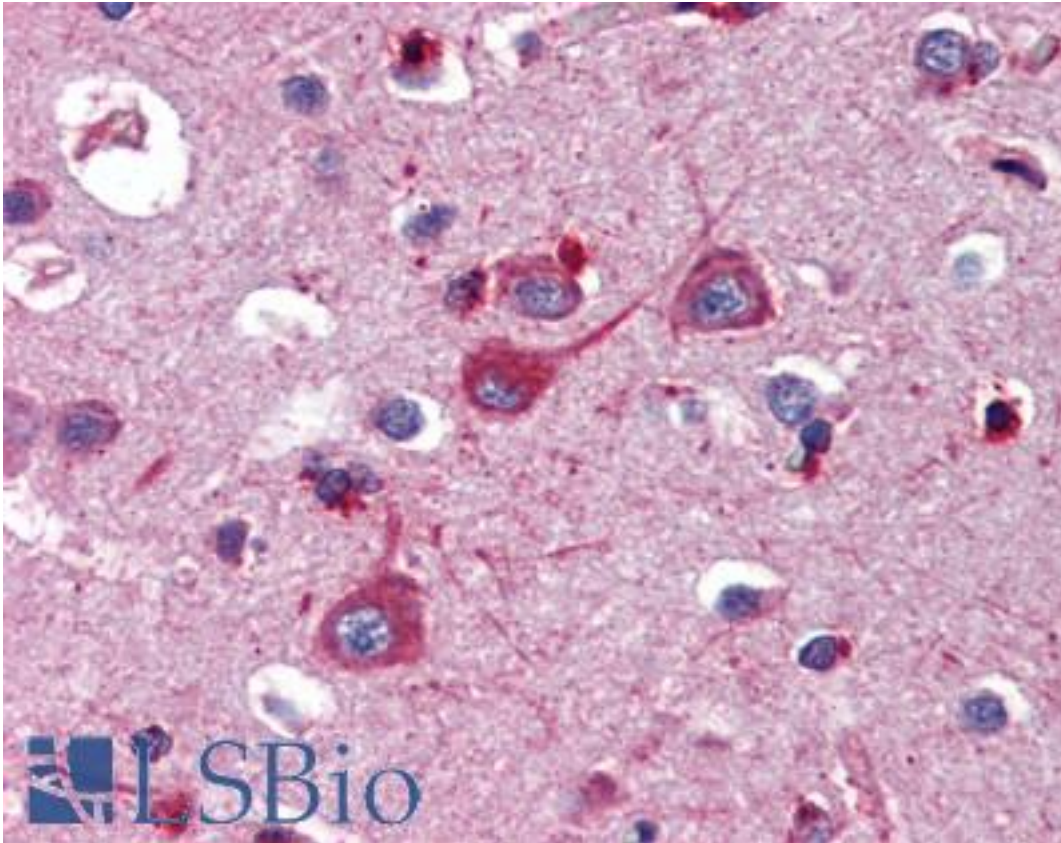
FAP-1 / PTPN13 Rabbit anti-Human Polyclonal (aa2290-2491) Antibody - LS-B3310 - LSBio	
<b>CatalogID:</b>	LS-B3310
<b>Validation:</b>	This antibody replaces catalog number LS-C50343. It has been validated for use in the following assays: IHC-P.
<b>Target:</b>	protein tyrosine phosphatase, non-receptor type 13 (APO-1/CD95 (Fas)-associated phosphatase) (PTPN13)
<b>Synonyms:</b>	PTPN13 Antibody, FAP-1 Antibody, HPTP1E Antibody, HPTPE1 Antibody, Fas associated phosphatase 1 Antibody, Phosphatase rip Antibody, PTP-BAS Antibody, PTP-E1 Antibody, PTP-BL Antibody, PTP1E Antibody, PTPLE Antibody, PNP1 Antibody, PTPL1 Antibody
<b>Family / Subfamily:</b>	Protein Phosphatase / NT7
<b>Host</b>	PTPN13 antibody was produced in Rabbit
<b>Clonality:</b>	Polyclonal
<b>Immunogen Species:</b>	FAP-1 / PTPN13 antibody was raised against Human
<b>Immunogen:</b>	FAP-1 / PTPN13 antibody was raised against recombinant protein encoding aa 2290-2491 of human FAP-1.
<b>Epitope:</b>	aa2290-2491
<b>Reactivity:</b>	Human
<b>Purification:</b>	Immunoaffinity purified
<b>Presentation:</b>	10 mM PBS, pH 7.4, BSA, sodium azide.
<b>Recommended Storage:</b>	Long term: -20°C; Short term: +4°C. Avoid repeat freeze-thaw cycles.
<b>Usage Summary:</b>	Immunohistochemistry: LS-B3310 was validated for use in immunohistochemistry on a panel of 21 formalin-fixed, paraffin-embedded (FFPE) human tissues after heat induced antigen retrieval in pH 6.0 citrate buffer. After incubation with the primary antibody, slides were incubated with biotinylated secondary antibody, followed by alkaline phosphatase-streptavidin and chromogen. The stained slides were evaluated by a pathologist to confirm staining specificity. The optimal working concentration for LS-B3310 was determined to be 10 ug/ml.
<b>Uses:</b>	IHC - Paraffin (10 µg/ml) (Optimal dilution to be determined by the researcher)
<b>Size:</b>	250 µl

**Immunohistochemistry Image:**



Anti-PTPN13 antibody IHC of human kidney. Immunohistochemistry of formalin-fixed, paraffin-embedded tissue after heat-induced antigen retrieval. Antibody LS-B3310 concentration 10 ug/ml.

**Immunohistochemistry Image:**



Anti-PTPN13 antibody IHC of human brain, cortex. Immunohistochemistry of formalin-fixed, paraffin-embedded tissue after heat-induced antigen retrieval. Antibody LS-B3310 concentration 10 ug/ml.

**Requested From:**

Japan

Laboratory Reagent For In Vitro Research Use Only

Not for resale without prior written consent from LifeSpan BioSciences, Inc.

Created on 9/23/2014

© 2014 LifeSpan BioSciences